

Datasheet for ABIN7274351

CLEC14A Protein (AA 22-397) (His tag)**2** Images[Go to Product page](#)

Overview

Quantity:	100 µg
Target:	CLEC14A
Protein Characteristics:	AA 22-397
Origin:	Human
Source:	HEK-293 Cells
Protein Type:	Recombinant
Purification tag / Conjugate:	This CLEC14A protein is labelled with His tag.

Product Details

Purpose:	Human CLEC14A Protein
Sequence:	Glu22-Ala397
Characteristics:	Recombinant Human CLEC14A Protein is expressed from HEK293 with His tag at the C-Terminus. It contains Glu22-Ala397.
Purity:	> 95 % as determined by Tris-Bis PAGE, > 95 % as determined by HPLC
Sterility:	0.22 µm filtered
Endotoxin Level:	Less than 1EU per µg by the LAL method.

Target Details

Target:	CLEC14A
Alternative Name:	CLEC14A (CLEC14A Products)

Target Details

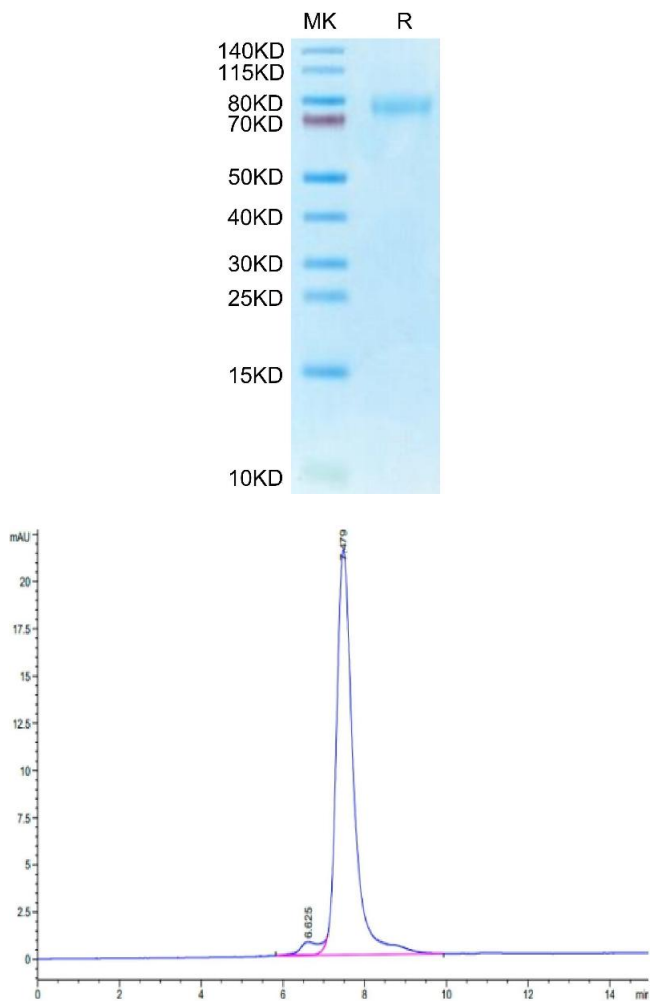
Background:	CLEC14A is a single-pass transmembrane glycoprotein belonging to the vascular expressed C-type lectin family. CLEC14A is found to be expressed in vascular endothelial cells during embryogenesis and is also implicated in tumor angiogenesis.
Molecular Weight:	40.94 kDa. Due to glycosylation, the protein migrates to 70-80 kDa based on Tris-Bis PAGE result.
UniProt:	Q86T13

Application Details

Restrictions:	For Research Use only
---------------	-----------------------

Handling

Format:	Lyophilized
Reconstitution:	Centrifuge the tube before opening. Reconstituting to a concentration more than 100 µg/mL is recommended. Dissolve the lyophilized protein in distilled water.
Buffer:	Lyophilized from 0.22µm filtered solution in PBS (pH 7.4). Normally 8 % trehalose is added as protectant before lyophilization.
Storage:	-20 °C,-80 °C
Storage Comment:	-20 to -80°C for 12 months as supplied from date of receipt.,-80°C for 3-6 months after reconstitution.,2-8°C for 2-7 days after reconstitution.,Recommend to aliquot the protein into smaller quantities for optimal storage. Please minimize freeze-thaw cycles.
Expiry Date:	12 months



SDS-PAGE

Image 1. Human CLEC14A on Tris-Bis PAGE under reduced condition. The purity is greater than 95 % .

Size-exclusion chromatography-High Pressure Liquid Chromatography

Image 2. The purity of Human CLEC14A is greater than 95 % as determined by SEC-HPLC.