

Datasheet for ABIN7274352

CLEC1A Protein (AA 74-280) (Fc Tag)**3** Images[Go to Product page](#)

Overview

Quantity:	100 µg
Target:	CLEC1A
Protein Characteristics:	AA 74-280
Origin:	Human
Source:	HEK-293 Cells
Protein Type:	Recombinant
Purification tag / Conjugate:	This CLEC1A protein is labelled with Fc Tag.

Product Details

Purpose:	Human CLEC-1 Protein
Sequence:	Gln74-Asp280
Characteristics:	Recombinant Human CLEC-1 Protein is expressed from HEK293 with hFc tag at the N-Terminus. It contains Gln74-Asp280.
Purity:	> 95 % as determined by Tris-Bis PAGE
Sterility:	0.22 µm filtered
Endotoxin Level:	Less than 1EU per µg by the LAL method.
Biological Activity Comment:	Immobilized Human CLEC-1, hFc Tag at 0.5µg/ml (100µl/Well) on the plate. Dose response curve for Biotinylated Anti-CLEC-1 Antibody, hFc Tag with the EC50 22.1ng/ml determined by ELISA. See testing image for detail.

Target Details

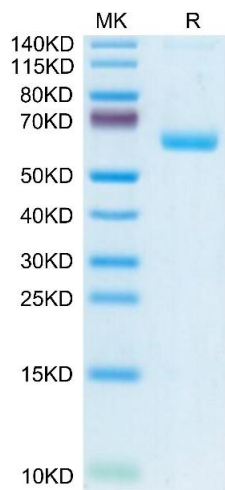
Target:	CLEC1A
Alternative Name:	CLEC-1 (CLEC1A Products)
Background:	C-type lectin-like receptor-1 (CLEC-1) is a member of the Dectin-1 cluster of pattern recognition receptors (PRRs). It is involved in host immunity, has immunoregulatory function, and supports allograft tolerance. CLEC-1 may act as a negative regulator of Dectin-1 induced host inflammatory response via suppressing neutrophils recruitment and production of pro-inflammatory cytokine IL-1 β production in response to <i>A. fumigatus</i> keratitis.
Molecular Weight:	51.2 kDa. Due to glycosylation, the protein migrates to 60-70 kDa based on Tris-Bis PAGE result.
UniProt:	Q8NC01

Application Details

Restrictions:	For Research Use only
---------------	-----------------------

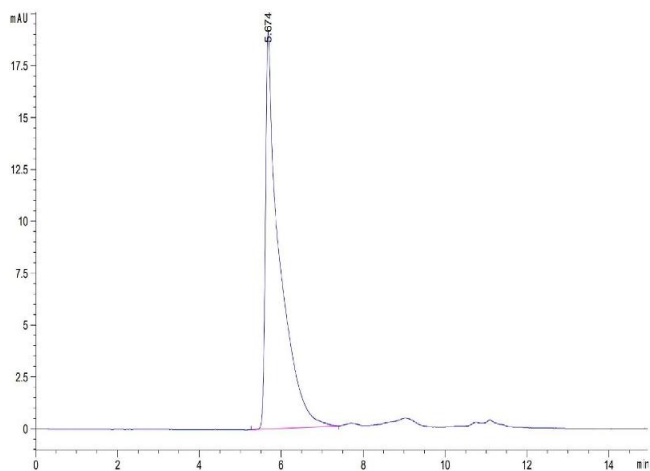
Handling

Format:	Lyophilized
Reconstitution:	Centrifuge the tube before opening. Reconstituting to a concentration more than 100 μ g/mL is recommended. Dissolve the lyophilized protein in distilled water.
Buffer:	Lyophilized from 0.22 μ m filtered solution in PBS (pH 7.4). Normally 8 % trehalose is added as protectant before lyophilization.
Storage:	-20 °C,-80 °C
Storage Comment:	-20 to -80°C for 12 months as supplied from date of receipt.,-80°C for 3-6 months after reconstitution.,2-8°C for 2-7 days after reconstitution.,Recommend to aliquot the protein into smaller quantities for optimal storage. Please minimize freeze-thaw cycles.
Expiry Date:	12 months



SDS-PAGE

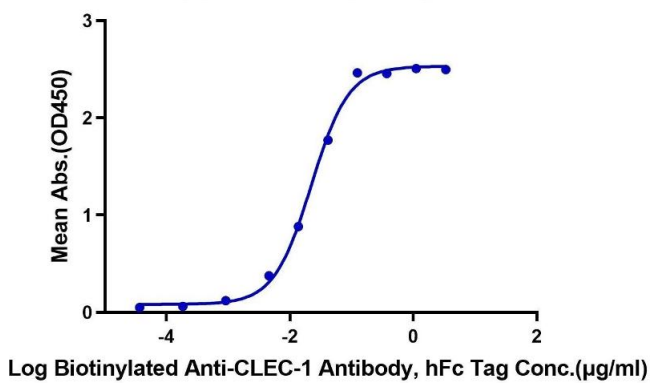
Image 1. Human CLEC-1 on Tris-Bis PAGE under reduced condition. The purity is greater than 95 % .



Size-exclusion chromatography-High Pressure Liquid Chromatography

Image 2. The purity of Human CLEC-1 is greater than 95 % as determined by SEC-HPLC.

Human CLEC-1, hFc Tag ELISA
0.05µg Human CLEC-1, hFc Tag Per Well



ELISA

Image 3. Immobilized Human CLEC-1, hFc Tag at 0.5 µg/mL (100 µL/Well) on the plate. Dose response curve for Biotinylated Anti-CLEC-1 Antibody, hFc Tag with the EC50 22.1 ng/mL determined by ELISA.