

Datasheet for ABIN7274355

CLEC5A Protein (AA 26-188) (Fc Tag)**3** Images[Go to Product page](#)

Overview

Quantity:	100 µg
Target:	CLEC5A
Protein Characteristics:	AA 26-188
Origin:	Human
Source:	HEK-293 Cells
Protein Type:	Recombinant
Purification tag / Conjugate:	This CLEC5A protein is labelled with Fc Tag.

Product Details

Purpose:	Human MDL-1/CLEC5A Protein
Sequence:	Tyr26-Lys188
Characteristics:	Recombinant Human MDL-1/CLEC5A Protein is expressed from HEK293 with hFc tag at the N-Terminus. It contains Tyr26-Lys188.
Purity:	> 95 % as determined by Tris-Bis PAGE, > 95 % as determined by HPLC
Sterility:	0.22 µm filtered
Endotoxin Level:	Less than 1EU per µg by the LAL method.
Biological Activity Comment:	Immobilized Human MDL-1, hFc Tag at 2µg/ml (100µl/well) on the plate. Dose response curve for Biotinylated Anti-MDL-1 Antibody, hFc Tag with the EC50 of 17.4ng/ml determined by ELISA. See testing image for detail.

Target Details

Target:	CLEC5A
Alternative Name:	MDL-1 (CLEC5A Products)
Background:	In <i>C. elegans</i> , increased lifespan in daf-2 insulin/IGF-1 receptor mutants is accompanied by up-regulation of the MDL-1 Mad basic helix-loop-helix leucine zipper transcription factor. MDL-1, like its mammalian orthologs, is an inhibitor of cell proliferation and growth that slows progression of an age-related pathology in <i>C. elegans</i> (uterine tumors). In addition, intestine-limited rescue of mdl-1 increased lifespan but not to wild type levels. Thus, mdl-1 likely acts both in the intestine and the germline to influence age-related mortality.
Molecular Weight:	46 kDa. Due to glycosylation, the protein migrates to 63-70 kDa based on Tris-Bis PAGE result.

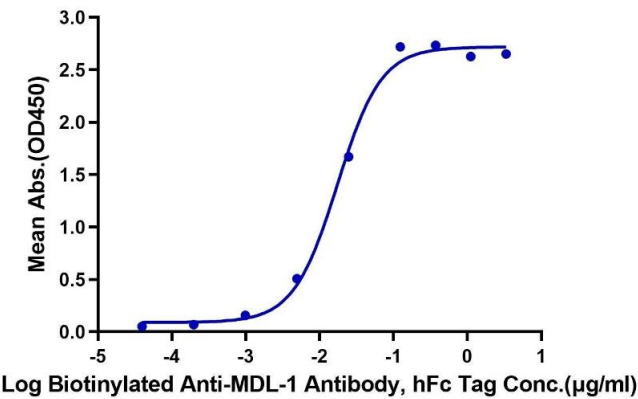
Application Details

Restrictions:	For Research Use only
---------------	-----------------------

Handling

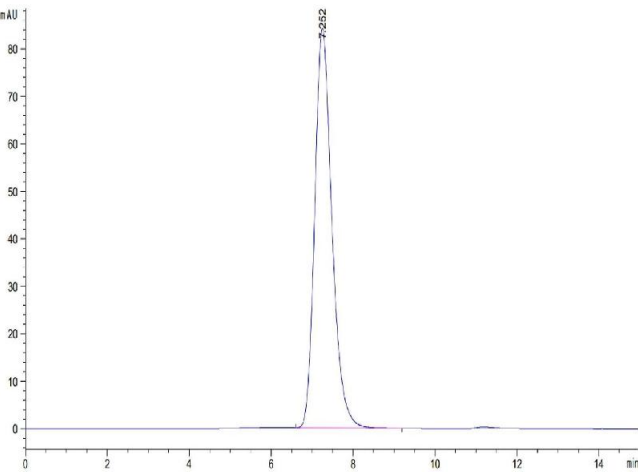
Format:	Lyophilized
Reconstitution:	Centrifuge the tube before opening. Reconstituting to a concentration more than 100 µg/mL is recommended. Dissolve the lyophilized protein in distilled water.
Buffer:	Lyophilized from 0.22µm filtered solution in PBS (pH 7.4). Normally 8 % trehalose is added as protectant before lyophilization.
Storage:	-20 °C,-80 °C
Storage Comment:	-20 to -80°C for 12 months as supplied from date of receipt.,-80°C for 3-6 months after reconstitution.,2-8°C for 2-7 days after reconstitution.,Recommend to aliquot the protein into smaller quantities for optimal storage. Please minimize freeze-thaw cycles.
Expiry Date:	12 months

Human MDL-1, hFc Tag ELISA
0.2µg Human MDL-1, hFc Tag Per Well



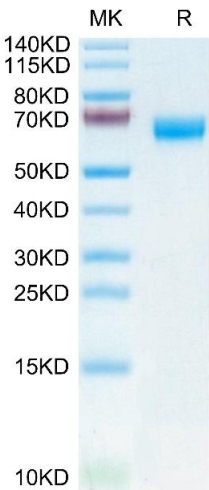
ELISA

Image 1. Immobilized Human MDL-1, hFc Tag at 2 µg/mL (100 µL/well) on the plate. Dose response curve for Biotinylated Anti-MDL-1 Antibody, hFc Tag with the EC50 of 17.4 ng/mL determined by ELISA.



Size-exclusion chromatography-High Pressure Liquid Chromatography

Image 2. The purity of Human MDL-1/CLEC5A is greater than 95 % as determined by SEC-HPLC.



SDS-PAGE

Image 3. Human MDL-1/CLEC5A on Tris-Bis PAGE under reduced condition. The purity is greater than 95 % .