

Datasheet for ABIN7274358

CLEC12A Protein (AA 65-265) (His-Avi Tag,Biotin)[Go to Product page](#)

4 Images

Overview

| | |
|-------------------------------|---|
| Quantity: | 100 µg |
| Target: | CLEC12A |
| Protein Characteristics: | AA 65-265 |
| Origin: | Human |
| Source: | HEK-293 Cells |
| Protein Type: | Recombinant |
| Purification tag / Conjugate: | This CLEC12A protein is labelled with His-Avi Tag,Biotin. |

Product Details

| | |
|------------------------------|---|
| Purpose: | Biotinylated Human CLEC12A/MICL/CLL-1 Protein |
| Sequence: | His65-Ala265 |
| Characteristics: | Recombinant Biotinylated Human CLEC12A/MICL/CLL-1 Protein is expressed from HEK293 with His tag at the N-Terminus and Avi tag at the C-Terminus.It contains His65-Ala265. |
| Purity: | > 95 % as determined by Tris-Bis PAGE,> 95 % as determined by HPLC |
| Sterility: | 0.22 µm filtered |
| Endotoxin Level: | Less than 1EU per µg by the LAL method. |
| Biological Activity Comment: | Immobilized Anti-CLEC12A Antibody, hFc Tag at 1µg/ml (100µl/well) on the plate. Dose response curve for Biotinylated Human CLEC12A, His Tag with the EC50 of 0.41µg/ml determined by ELISA. See testing image for detail. |

Target Details

| | |
|-------------------|--|
| Target: | CLEC12A |
| Alternative Name: | CLEC12A (CLEC12A Products) |
| Background: | CLEC12A has recently been identified as an antigen, expressed on leukemic stem cells and leukemic blasts. Given the fact that this expression profile seems stable throughout diagnosis, treatment and relapse on leukemic blasts and leukemic stem cells, CLEC12A can be considered a highly potent and reliable marker for the detection of measurable residual disease and therefore applicable for risk stratification and prognostication in AML. |
| Molecular Weight: | 26.4 kDa. Due to glycosylation, the protein migrates to 38-50 kDa based on Tris-Bis PAGE result. |

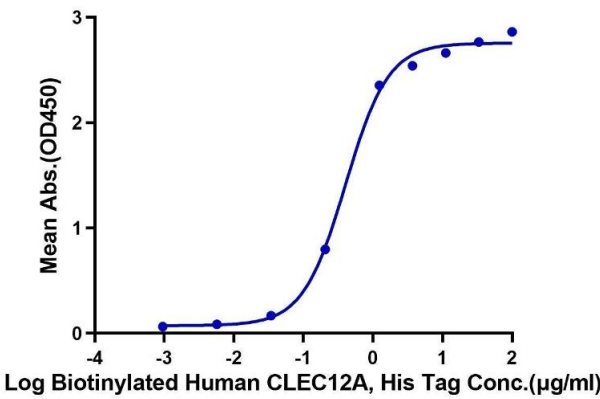
Application Details

| | |
|---------------|-----------------------|
| Restrictions: | For Research Use only |
|---------------|-----------------------|

Handling

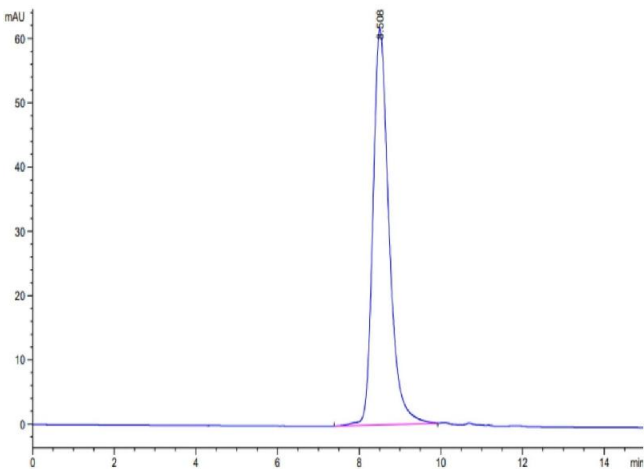
| | |
|------------------|---|
| Format: | Lyophilized |
| Reconstitution: | Centrifuge the tube before opening. Reconstituting to a concentration more than 100 µg/mL is recommended. Dissolve the lyophilized protein in distilled water. |
| Buffer: | Lyophilized from 0.22µm filtered solution in PBS (pH 7.4). Normally 8 % trehalose is added as protectant before lyophilization. |
| Storage: | -20 °C,-80 °C |
| Storage Comment: | -20 to -80°C for 12 months as supplied from date of receipt., -80°C for 3-6 months after reconstitution., 2-8°C for 2-7 days after reconstitution., Recommend to aliquot the protein into smaller quantities for optimal storage. Please minimize freeze-thaw cycles. |
| Expiry Date: | 12 months |

Biotinylated Human CLEC12A, His Tag ELISA
0.1µg Anti-CLEC12A Antibody, hFc Tag Per Well



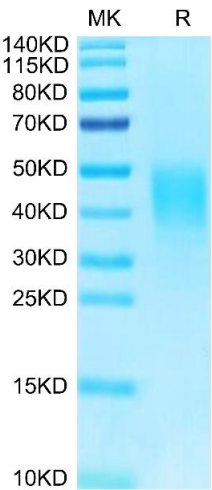
ELISA

Image 1. Immobilized Anti-CLEC12A Antibody, hFc Tag at 1 µg/mL (100 µL/well) on the plate. Dose response curve for Biotinylated Human CLEC12A, His Tag with the EC50 of 0.41 µg/mL determined by ELISA.



Size-exclusion chromatography-High Pressure Liquid Chromatography

Image 2. The purity of Biotinylated Human CLEC12A is greater than 95 % as determined by SEC-HPLC.



SDS-PAGE

Image 3. Biotinylated Human CLEC12A on Tris-Bis PAGE under reduced condition. The purity is greater than 95 % .

Please check the [product details page](#) for more images. Overall 4 images are available for ABIN7274358.