

Datasheet for ABIN7274359

CLEC12A Protein (AA 65-265) (Fc-Avi Tag,Biotin)**3** Images[Go to Product page](#)

Overview

Quantity:	100 µg
Target:	CLEC12A
Protein Characteristics:	AA 65-265
Origin:	Human
Source:	HEK-293 Cells
Protein Type:	Recombinant
Purification tag / Conjugate:	This CLEC12A protein is labelled with Fc-Avi Tag,Biotin.

Product Details

Purpose:	Biotinylated Human CLEC12A/MICL/CLL-1 Protein
Sequence:	His65-Ala265
Characteristics:	Recombinant Biotinylated Human CLEC12A/MICL/CLL-1 Protein is expressed from HEK293 with hFc tag and Avi tag at the N-Terminus.It contains His65-Ala265.
Purity:	> 95 % as determined by Tris-Bis PAGE,> 95 % as determined by HPLC
Sterility:	0.22 µm filtered
Endotoxin Level:	Less than 1EU per µg by the LAL method.
Biological Activity Comment:	Immobilized Anti-CLEC12A Antibody, hFc Tag at 0.5µg/ml (100µl/Well) on the plate. Dose response curve for Biotinylated Human CLEC12A, hFc Tag with the EC50 of 30.7ng/ml determined by ELISA. See testing image for detail.

Target Details

Target:	CLEC12A
Alternative Name:	CLEC12A (CLEC12A Products)
Background:	CLEC12A has recently been identified as an antigen, expressed on leukemic stem cells and leukemic blasts. Given the fact that this expression profile seems stable throughout diagnosis, treatment and relapse on leukemic blasts and leukemic stem cells, CLEC12A can be considered a highly potent and reliable marker for the detection of measurable residual disease and therefore applicable for risk stratification and prognostication in AML.
Molecular Weight:	51.7 kDa. Due to glycosylation, the protein migrates to 67-70 kDa based on Tris-Bis PAGE result.

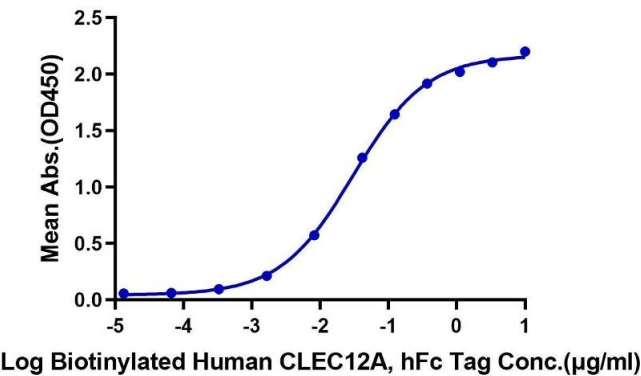
Application Details

Restrictions:	For Research Use only
---------------	-----------------------

Handling

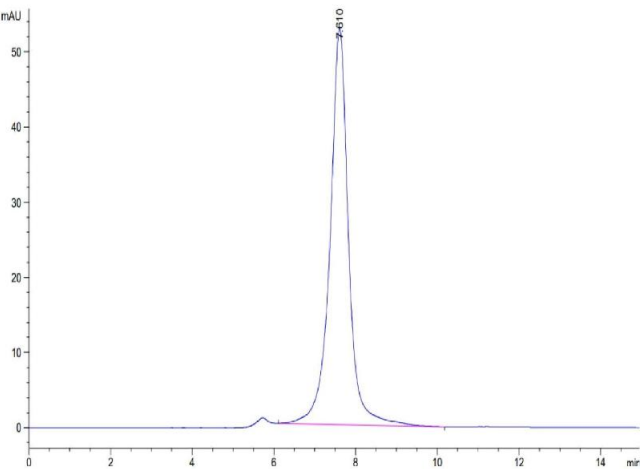
Format:	Lyophilized
Reconstitution:	Centrifuge the tube before opening. Reconstituting to a concentration more than 100 µg/mL is recommended. Dissolve the lyophilized protein in distilled water.
Buffer:	Lyophilized from 0.22µm filtered solution in PBS (pH 7.4). Normally 8 % trehalose is added as protectant before lyophilization.
Storage:	-20 °C,-80 °C
Storage Comment:	-20 to -80°C for 12 months as supplied from date of receipt.,-80°C for 3-6 months after reconstitution.,2-8°C for 2-7 days after reconstitution.,Recommend to aliquot the protein into smaller quantities for optimal storage. Please minimize freeze-thaw cycles.
Expiry Date:	12 months

Biotinylated Human CLEC12A, hFc Tag ELISA
0.05µg Anti-CLEC12A Antibody, hFc Tag Per Well



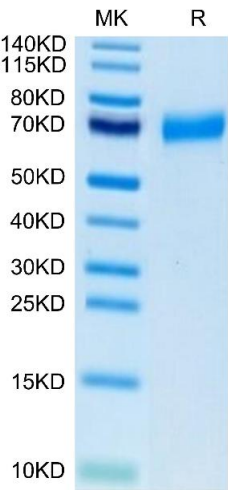
ELISA

Image 1. Immobilized Anti-CLEC12A Antibody, hFc Tag at 0.5 µg/mL (100 µL/Well) on the plate. Dose response curve for Biotinylated Human CLEC12A, hFc Tag with the EC50 of 30.7 ng/mL determined by ELISA.



Size-exclusion chromatography-High Pressure Liquid Chromatography

Image 2. The purity of Biotinylated Human CLEC12A/MICL/CLL-1 is greater than 95 % as determined by SEC-HPLC.



SDS-PAGE

Image 3. Biotinylated Human CLEC12A/MICL/CLL-1 on Tris-Bis PAGE under reduced condition. The purity is greater than 95 %.