

Datasheet for ABIN7274363

CLEC1A Protein (AA 73-269) (Fc Tag)[Go to Product page](#)**2** Images

Overview

Quantity:	100 µg
Target:	CLEC1A
Protein Characteristics:	AA 73-269
Origin:	Mouse
Source:	HEK-293 Cells
Protein Type:	Recombinant
Purification tag / Conjugate:	This CLEC1A protein is labelled with Fc Tag.

Product Details

Purpose:	Mouse CLEC-1 Protein
Sequence:	Gln73-Gln269
Characteristics:	Recombinant Mouse CLEC-1 Protein is expressed from HEK293 with hFc tag at the N-Terminus. It contains Gln73-Gln269.
Purity:	> 95 % as determined by Tris-Bis PAGE, > 95 % as determined by HPLC
Sterility:	0.22 µm filtered
Endotoxin Level:	Less than 1EU per µg by the LAL method.

Target Details

Target:	CLEC1A
Alternative Name:	CLEC-1 (CLEC1A Products)

Target Details

Background: C-type lectin-like receptor-1 (CLEC-1) is a member of the Dectin-1 cluster of pattern recognition receptors (PRRs). It is involved in host immunity, has immunoregulatory function, and supports allograft tolerance. CLEC-1 may act as a negative regulator of Dectin-1 induced host inflammatory response via suppressing neutrophils recruitment and production of pro-inflammatory cytokine IL-1 β production in response to *A. fumigatus* keratitis.

Molecular Weight: 50.4 kDa. Due to glycosylation, the protein migrates to 66-68 kDa based on Tris-Bis PAGE result.

UniProt: [Q8BWY2](#)

Application Details

Restrictions: For Research Use only

Handling

Format: Lyophilized

Reconstitution: Centrifuge the tube before opening. Reconstituting to a concentration more than 100 μ g/mL is recommended. Dissolve the lyophilized protein in distilled water.

Buffer: Lyophilized from 0.22 μ m filtered solution in PBS (pH 7.4). Normally 8 % trehalose is added as protectant before lyophilization.

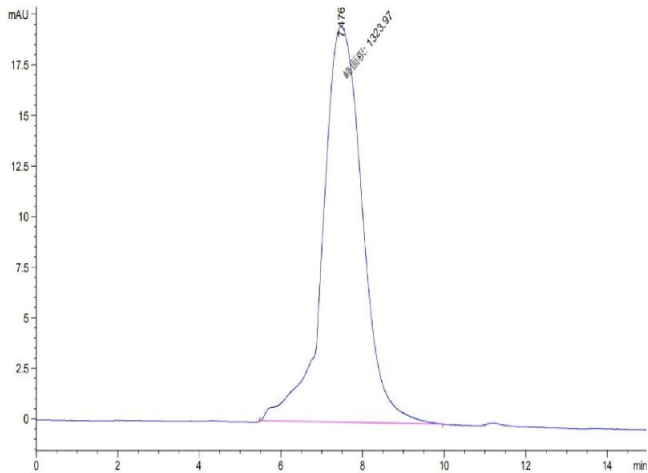
Storage: -20 °C,-80 °C

Storage Comment: -20 to -80°C for 12 months as supplied from date of receipt.,-80°C for 3-6 months after reconstitution.,2-8°C for 2-7 days after reconstitution.,Recommend to aliquot the protein into smaller quantities for optimal storage. Please minimize freeze-thaw cycles.

Expiry Date: 12 months

Size-exclusion chromatography-High Pressure Liquid Chromatography

Image 1. The purity of Mouse CLEC-1 is greater than 95 % as determined by SEC-HPLC.



SDS-PAGE

Image 2. Mouse CLEC-1 on Tris-Bis PAGE under reduced condition. The purity is greater than 95 % .

