

Datasheet for ABIN7274368

**Clusterin Protein (CLU) (AA 23-449) (His tag)****2** Images[Go to Product page](#)

## Overview

Quantity:	100 µg
Target:	Clusterin (CLU)
Protein Characteristics:	AA 23-449
Origin:	Human
Source:	HEK-293 Cells
Protein Type:	Recombinant
Purification tag / Conjugate:	This Clusterin protein is labelled with His tag.

## Product Details

Purpose:	Human Clusterin Protein
Sequence:	Asp23-Glu449
Characteristics:	Recombinant Human Clusterin Protein is expressed from HEK293 with His tag at the C-Terminus. It contains Asp23-Glu449.
Purity:	> 95 % as determined by Tris-Bis PAGE
Sterility:	0.22 µm filtered
Endotoxin Level:	Less than 1EU per µg by the LAL method.
Biological Activity Comment:	Immobilized Human Clusterin, His Tag at 0.5µg/ml (100µl/well) on the plate. Dose response curve for Anti-Clusterin Antibody, hFc Tag with the EC50 of 63.4ng/ml determined by ELISA. See testing image for detail.

## Target Details

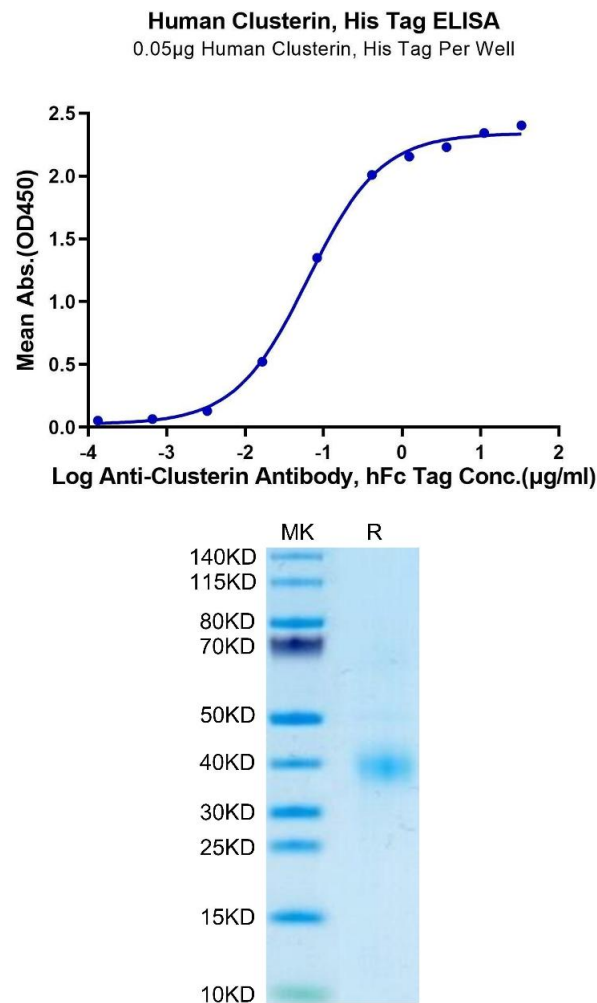
Target:	Clusterin (CLU)
Alternative Name:	Clusterin ( <a href="#">CLU Products</a> )
Background:	Clusterin (CLU) is a stress-activated, ATP-independent molecular chaperone, normally secreted from cells, that is up-regulated in Alzheimer disease and in many cancers. It plays important roles in protein homeostasis/proteostasis, inhibition of cell death pathways, and modulation of pro-survival signalling and transcriptional networks. Changes in the CLU gene locus are highly associated with Alzheimer disease, and many therapy-resistant cancers over-express CLU.
Molecular Weight:	51.2 kDa. The protein migrates to 38-41 kDa based on Tris-Bis PAGE result.
Pathways:	<a href="#">Apoptosis</a> , <a href="#">Negative Regulation of intrinsic apoptotic Signaling</a>

## Application Details

Restrictions:	For Research Use only
---------------	-----------------------

## Handling

Format:	Lyophilized
Reconstitution:	Centrifuge the tube before opening. Reconstituting to a concentration more than 100 µg/mL is recommended. Dissolve the lyophilized protein in distilled water.
Buffer:	Lyophilized from 0.22µm filtered solution in PBS ( pH 7.4). Normally 8 % trehalose is added as protectant before lyophilization.
Storage:	-20 °C,-80 °C
Storage Comment:	-20 to -80°C for 12 months as supplied from date of receipt.,-80°C for 3-6 months after reconstitution.,2-8°C for 2-7 days after reconstitution.,Recommend to aliquot the protein into smaller quantities for optimal storage. Please minimize freeze-thaw cycles.
Expiry Date:	12 months



**ELISA**

**Image 1.** Immobilized Human Clusterin, His Tag at 0.5 µg/mL (100 µL/well) on the plate. Dose response curve for Anti-Clusterin Antibody, hFc Tag with the EC50 of 63.4 ng/mL determined by ELISA.

**SDS-PAGE**

**Image 2.** Human Clusterin on Tris-Bis PAGE under reduced condition. The purity is greater than 95 % .