



Datasheet for ABIN7274379

## SARS-Coronavirus Nonstructural Protein 8 (SARS-CoV NSP8) (E166A) Protein



[Go to Product page](#)

### 2 Images

#### Overview

|                          |  |
|--------------------------|--|
| Quantity:                | 100 µg   |
| Target:                  | SARS-Coronavirus Nonstructural Protein 8 (SARS-CoV NSP8) |
| Protein Characteristics: | E166A  |
| Origin:                  | SARS Coronavirus-2 (SARS-CoV-2)                          |
| Source:                  | Escherichia coli (E. coli)                               |
| Protein Type:            | Recombinant  |

#### Product Details

|                  |   |
|------------------|---|
| Purpose:         | SARS-CoV-2 3CLpro/3C-like Protease Protein (E166A)  |
| Sequence:        | Ser1-Gln306 (E166A)   |
| Characteristics: | Recombinant SARS-CoV-2 3CLpro/3C-like Protease Protein (E166A) is expressed from E.coli without tag.It contains Ser1-Gln306(E166A). |
| Purity:          | > 95 % as determined by Tris-Bis PAGE,> 95 % as determined by HPLC  |
| Sterility:       | 0.22 µm filtered  |
| Endotoxin Level: | Less than 1EU per µg by the LAL method.   |

#### Target Details

|                   |  |
|-------------------|--|
| Target:           | SARS-Coronavirus Nonstructural Protein 8 (SARS-CoV NSP8) |
| Alternative Name: | 3CLpro ( <a href="#">SARS-CoV NSP8 Products</a> )        |
| Target Type:      | Viral Protein  |

## Target Details

|                   |   |
|-------------------|---|
| Background:       | 3CL protease, a viral cysteine proteinase, plays an important role in co-translational proteolytic processing of Coronavirus polyproteins. The 3CL protease cleaves as much as 11 sites in the replicase polyproteins and also releases the key replicative functions of polymerase and helicase. |
| Molecular Weight: | 34.4kDa same as Tris-Bis PAGE result.   |
| NCBI Accession:   | <a href="#">YP_009725301</a>  |

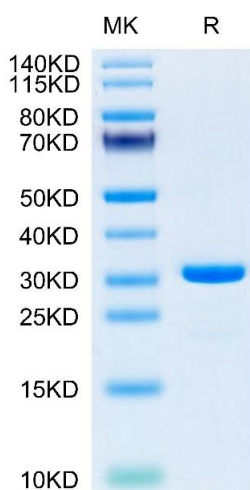
## Application Details

|               |                       |
|---------------|-----------------------|
| Restrictions: | For Research Use only |
|---------------|-----------------------|

## Handling

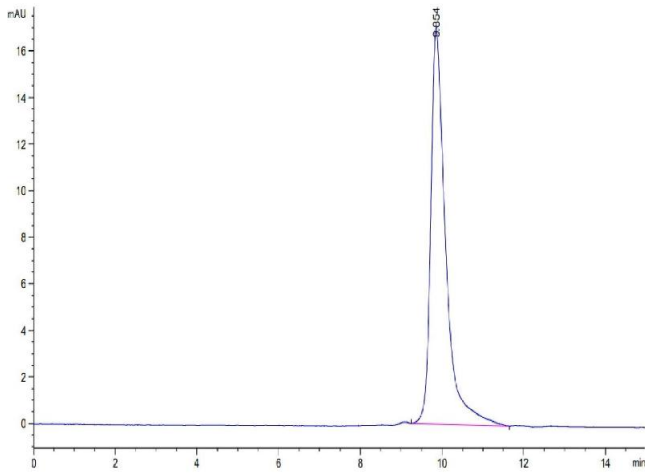
|                  |  |
|------------------|--|
| Format:          | Liquid   |
| Buffer:          | Supplied as 0.22µm filtered solution in PBS ( pH 7.4).   |
| Storage:         | -80 °C   |
| Storage Comment: | Valid for 12 months from date of receipt when stored at -80°C.,Recommend to aliquot the protein into smaller quantities for optimal storage. Please minimize freeze-thaw cycles. |
| Expiry Date:     | 12 months  |

## Images



### SDS-PAGE

**Image 1.** SARS-CoV-2 3CLpro (E166A) on Tris-Bis PAGE under reduced condition. The purity is greater than 95 % .



**Size-exclusion chromatography-High Pressure Liquid Chromatography**

**Image 2.** The purity of SARS-CoV-2 3CLpro (E166A) is greater than 95 % as determined by SEC-HPLC.