

Datasheet for ABIN7274415

**CRTAM Protein (AA 18-287) (His tag)**[Go to Product page](#)**1** Image

## Overview

Quantity:	100 µg
Target:	CRTAM
Protein Characteristics:	AA 18-287
Origin:	Dog
Source:	HEK-293 Cells
Protein Type:	Recombinant
Purification tag / Conjugate:	This CRTAM protein is labelled with His tag.

## Product Details

Purpose:	Canine CRTAM Protein
Sequence:	Phe18-Gly287
Characteristics:	Recombinant Canine CRTAM Protein is expressed from HEK293 with His tag at the C-Terminus. It contains Phe18-Gly287.
Purity:	> 95 % as determined by Tris-Bis PAGE
Sterility:	0.22 µm filtered
Endotoxin Level:	Less than 1EU per µg by the LAL method.

## Target Details

Target:	CRTAM
Alternative Name:	CRTAM ( <a href="#">CRTAM Products</a> )

## Target Details

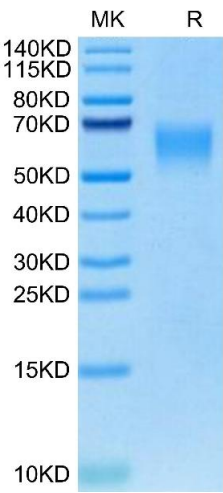
Background:	Class-I Restricted T Cell-Associated Molecule (CRTAM) is a protein that is expressed after T cell activation. The interaction of CRTAM with its ligand, nectin-like 2 (Nectl2), is required for the efficient production of IL-17, IL-22, and IFN $\gamma$ by murine CD4 T cells, and it plays a role in optimal CD8 T and NK cell cytotoxicity. CRTAM promotes the pro-inflammatory cytokine profile, therefore, it may take part in the immunopathology of autoimmune diseases such as diabetes type 1 or colitis.
Molecular Weight:	31.19 kDa. Due to glycosylation, the protein migrates to 55-70 kDa based on Tris-Bis PAGE result.
UniProt:	<a href="#">E2QWY2</a>
Pathways:	<a href="#">Regulation of Leukocyte Mediated Immunity</a> , <a href="#">Positive Regulation of Immune Effector Process</a> , <a href="#">Activated T Cell Proliferation</a>

## Application Details

Restrictions:	For Research Use only
---------------	-----------------------

## Handling

Format:	Lyophilized
Reconstitution:	Centrifuge the tube before opening. Reconstituting to a concentration more than 100 $\mu$ g/mL is recommended. Dissolve the lyophilized protein in distilled water.
Buffer:	Lyophilized from 0.22 $\mu$ m filtered solution in PBS ( pH 7.4). Normally 8 % trehalose is added as protectant before lyophilization.
Storage:	-20 °C,-80 °C
Storage Comment:	-20 to -80°C for 12 months as supplied from date of receipt.,-80°C for 3-6 months after reconstitution.,2-8°C for 2-7 days after reconstitution.,Recommend to aliquot the protein into smaller quantities for optimal storage. Please minimize freeze-thaw cycles.
Expiry Date:	12 months



SDS-PAGE

**Image 1.** Canine CRTAM on Tris-Bis PAGE under reduced condition. The purity is greater than 95 % .