

Datasheet for ABIN7274419

CRP Protein (AA 19-224) (His tag)**3** Images[Go to Product page](#)

Overview

Quantity:	100 µg
Target:	CRP
Protein Characteristics:	AA 19-224
Origin:	Human
Source:	HEK-293 Cells
Protein Type:	Recombinant
Purification tag / Conjugate:	This CRP protein is labelled with His tag.

Product Details

Purpose:	Human C-Reactive Protein /CRP Protein
Sequence:	Gln19-Pro224
Characteristics:	Recombinant Human C-Reactive Protein /CRP Protein is expressed from HEK293 with His tag at the N-Terminus.It contains Gln19-Pro224.
Purity:	> 95 % as determined by Tris-Bis PAGE,> 95 % as determined by HPLC
Sterility:	0.22 µm filtered
Endotoxin Level:	Less than 1EU per µg by the LAL method.

Target Details

Target:	CRP
Alternative Name:	C-Reactive Protein (CRP Products)

Target Details

Background:	C-reactive protein (CRP) is a polypeptide molecule belonging to the family of pentraxins. CRP is synthesized primarily by the liver in response to certain pro-inflammatory cytokines. It plays an important role in innate immunity, opsonization by its properties, complement activation and immunoglobulins receptor binding. CRP is a protein of the acute systemic inflammation and is, therefore, a prime marker of inflammation. The CRP is quantified by immunonephelometry or immunoturbidimetry.
Molecular Weight:	24.1 kDa. Due to glycosylation, the protein migrates to 25-27 kDa based on Tris-Bis PAGE result.
NCBI Accession:	NP_000558
Pathways:	Carbohydrate Homeostasis

Application Details

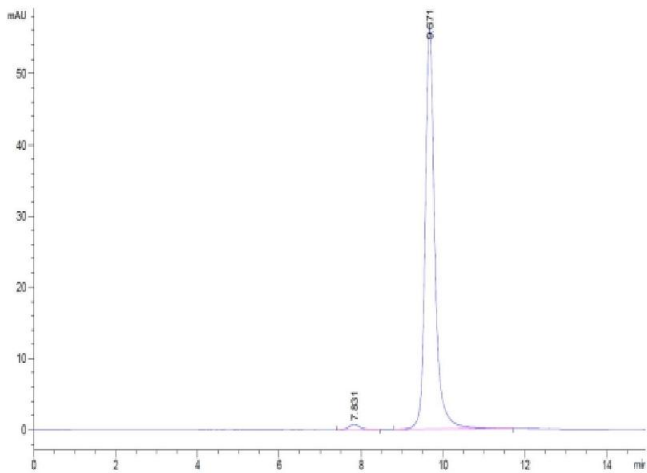
Restrictions:	For Research Use only
---------------	-----------------------

Handling

Format:	Lyophilized
Reconstitution:	Centrifuge the tube before opening. Reconstituting to a concentration more than 100 µg/mL is recommended. Dissolve the lyophilized protein in distilled water.
Buffer:	Lyophilized from 0.22µm filtered solution in 20 mM Tris, 300 mM NaCl (pH 8.0). Normally 8 % trehalose is added as protectant before lyophilization.
Storage:	-20 °C,-80 °C
Storage Comment:	-20 to -80°C for 12 months as supplied from date of receipt.,-80°C for 3-6 months after reconstitution.,2-8°C for 2-7 days after reconstitution.,Recommend to aliquot the protein into smaller quantities for optimal storage. Please minimize freeze-thaw cycles.
Expiry Date:	12 months

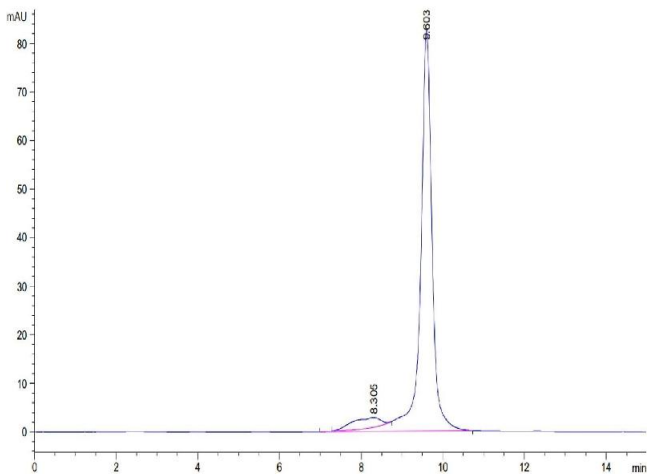
Size-exclusion chromatography-High Pressure Liquid Chromatography

Image 1. The purity of Human CRP is greater than 95 % as determined by SEC-HPLC.



Size-exclusion chromatography-High Pressure Liquid Chromatography

Image 2. The purity of Human C-Reactive Protein /CRP is greater than 94 % as determined by SEC-HPLC.



SDS-PAGE

Image 3. Human C-Reactive Protein /CRP on Tris-Bis PAGE under reduced condition. The purity is greater than 95 % .

