

Datasheet for ABIN7274423

M-CSF/CSF1 Protein (AA 33-190)

5 Images

[Go to Product page](#)

Overview

Quantity:	100 µg
Target:	M-CSF/CSF1 (CSF1)
Protein Characteristics:	AA 33-190
Origin:	Human
Source:	HEK-293 Cells
Protein Type:	Recombinant

Product Details

Purpose:	Human M-CSF/CSF-1 Protein
Sequence:	Glu33-Asn190
Characteristics:	Recombinant Human M-CSF/CSF-1 Protein is expressed from HEK293 without tag. It contains Glu33-Asn190.
Purity:	> 95 % as determined by Tris-Bis PAGE, > 95 % as determined by HPLC
Sterility:	0.22 µm filtered
Endotoxin Level:	Less than 1EU per µg by the LAL method.
Biological Activity Comment:	Immobilized Human M-CSF at 0.5µg/ml (100µl/Well) on the plate. Dose response curve for Human M-CSF R, hFc Tag with the EC50 29.6ng/ml determined by ELISA. The affinity constant of 2.06 nM as determined in SPR assay (Biacore T200). See testing image for detail.

Target Details

Target:	M-CSF/CSF1 (CSF1)
---------	-------------------

Target Details

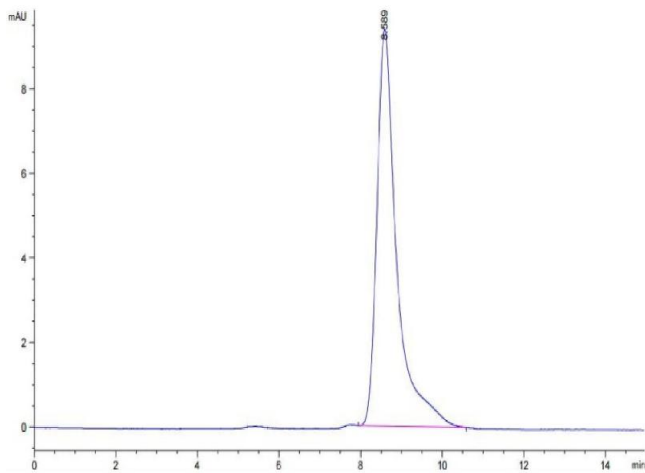
Alternative Name:	M-CSF (CSF1 Products)
Background:	CSF-1, also known as M-CSF , is a four alpha -helical-bundle cytokine that is the primary regulator of macrophage survival, proliferation and differentiation. CSF-1 is also essential for the survival and proliferation of osteoclast progenitors.CSF-1 is cytokine that plays an essential role in the regulation of survival, proliferation and differentiation of hematopoietic precursor cells, especially mononuclear phagocytes, such as macrophages and monocytes. Promotes the release of proinflammatory chemokines, and thereby plays an important role in innate immunity and in inflammatory processes. This mutation leads to a deletion of exons 2-7 of the EGFR gene and renders the mutant receptor incapable of binding any known ligand.
Molecular Weight:	20.5 kDa. Due to glycosylation, the protein migrates to 23-28 kDa based on Tris-Bis PAGE result.
Pathways:	RTK Signaling

Application Details

Restrictions:	For Research Use only
---------------	-----------------------

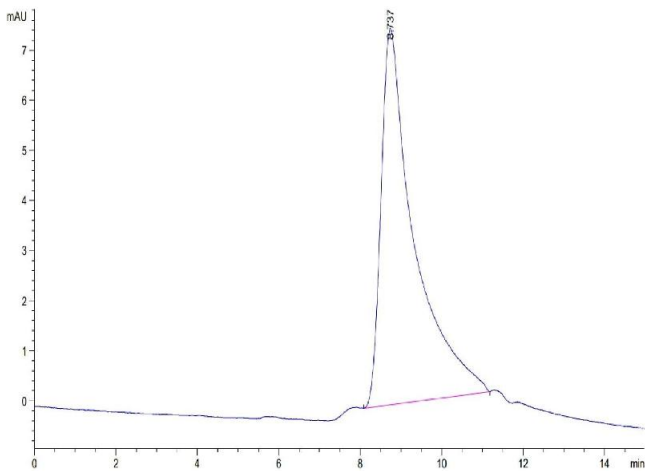
Handling

Format:	Lyophilized
Reconstitution:	Centrifuge the tube before opening. Reconstituting to a concentration more than 100 µg/mL is recommended. Dissolve the lyophilized protein in distilled water.
Buffer:	Lyophilized from 0.22µm filtered solution in PBS (pH 7.4). Normally 8 % trehalose is added as protectant before lyophilization.
Storage:	-20 °C,-80 °C
Storage Comment:	-20 to -80°C for 12 months as supplied from date of receipt.,-80°C for 3-6 months after reconstitution.,2-8°C for 2-7 days after reconstitution.,Recommend to aliquot the protein into smaller quantities for optimal storage. Please minimize freeze-thaw cycles.
Expiry Date:	12 months



Size-exclusion chromatography-High Pressure Liquid Chromatography

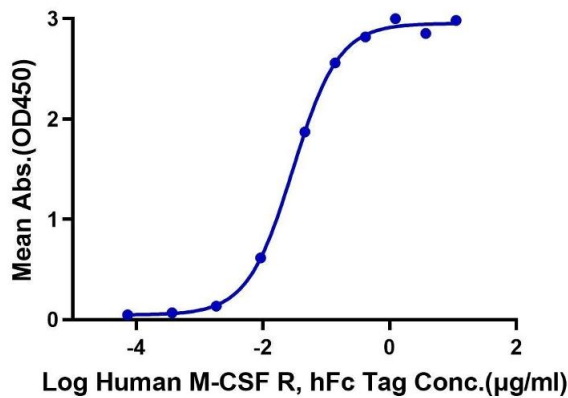
Image 1. The purity of Human M-CSF is greater than 95 % as determined by SEC-HPLC.



Size-exclusion chromatography-High Pressure Liquid Chromatography

Image 2. The purity of Human M-CSF is greater than 95 % as determined by SEC-HPLC.

Human M-CSF, No Tag ELISA
0.05µg Human M-CSF, No Tag Per Well



ELISA

Image 3. Immobilized Human M-CSF at 0.5 µg/mL (100 µL/Well) on the plate. Dose response curve for Human M-CSF R, hFc Tag with the EC50 29.6 ng/mL determined by ELISA.

Please check the [product details page](#) for more images. Overall 5 images are available for ABIN7274423.