



[Go to Product page](#)

Datasheet for ABIN7274424

## CSF1R Protein (AA 20-512) (Fc Tag)

### 4 Images

#### Overview

Quantity:	100 µg
Target:	CSF1R
Protein Characteristics:	AA 20-512
Origin:	Human
Source:	HEK-293 Cells
Protein Type:	Recombinant
Purification tag / Conjugate:	This CSF1R protein is labelled with Fc Tag.

#### Product Details

Purpose:	Human M-CSF R/CSF1R/CD115 Protein
Sequence:	Ile20-Glu512
Characteristics:	Recombinant Human M-CSF R/CSF1R/CD115 Protein is expressed from HEK293 with hFc tag at the C-Terminus.It contains Ile20-Glu512.
Purity:	> 95 % as determined by Tris-Bis PAGE,> 95 % as determined by HPLC
Sterility:	0.22 µm filtered
Endotoxin Level:	Less than 1EU per µg by the LAL method.
Biological Activity Comment:	Immobilized Human M-CSF at 0.5µg/ml (100µl/Well) on the plate. Dose response curve for Human M-CSF R, hFc Tag with the EC50 12.4ng/ml determined by ELISA. The affinity constant of 0.24 nM as determined in SPR assay (Biacore T200). See testing image for detail.

## Target Details

---

Target:	CSF1R
Alternative Name:	M-CSF R ( <a href="#">CSF1R Products</a> )
Background:	CSF1R also known as M-CSF receptor, the product of the c-fms proto-oncogene, is a member of the type III subfamily of receptor tyrosine kinases that also includes receptors for SCF and PDGF. These receptors each contain five immunoglobulin-like domains in their extracellular domain (ECD) and a split kinase domain in their intracellular region. CSF1R is tyrosine-protein kinase that acts as cell-surface receptor for CSF1 and IL34 and plays an essential role in the regulation of survival, proliferation and differentiation of hematopoietic precursor cells, especially mononuclear phagocytes, such as macrophages and monocytes.
Molecular Weight:	81.3 kDa. Due to glycosylation, the protein migrates to 100-130 kDa based on Tris-Bis PAGE result.
Pathways:	<a href="#">RTK Signaling</a> , <a href="#">Inositol Metabolic Process</a> , <a href="#">Cell-Cell Junction Organization</a>

## Application Details

---

Restrictions:	For Research Use only
---------------	-----------------------

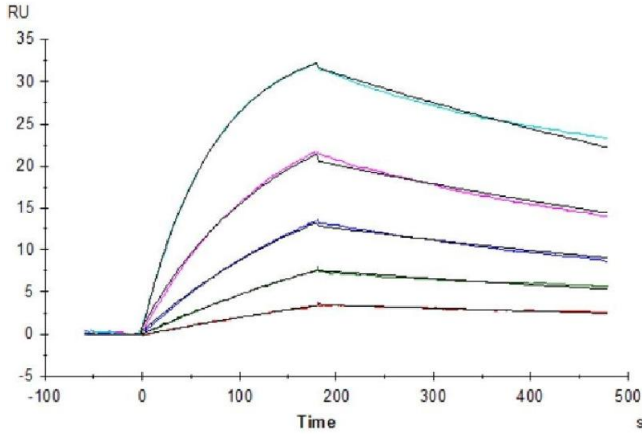
## Handling

---

Format:	Lyophilized
Reconstitution:	Centrifuge the tube before opening. Reconstituting to a concentration more than 100 µg/mL is recommended. Dissolve the lyophilized protein in distilled water.
Buffer:	Lyophilized from 0.22µm filtered solution in PBS (pH 7.4). Normally 8 % trehalose is added as protectant before lyophilization.
Storage:	-20 °C, -80 °C
Storage Comment:	-20 to -80°C for 12 months as supplied from date of receipt., -80°C for 3-6 months after reconstitution., 2-8°C for 2-7 days after reconstitution., Recommend to aliquot the protein into smaller quantities for optimal storage. Please minimize freeze-thaw cycles.
Expiry Date:	12 months

### Surface Plasmon Resonance

**Image 1.** Human M-CSF, His Tag captured on CM5 Chip via Anti-his Antibody can bind Human M-CSF R, hFc Tag with an affinity constant of 0.24 nM as determined in SPR assay (Biacore T200).



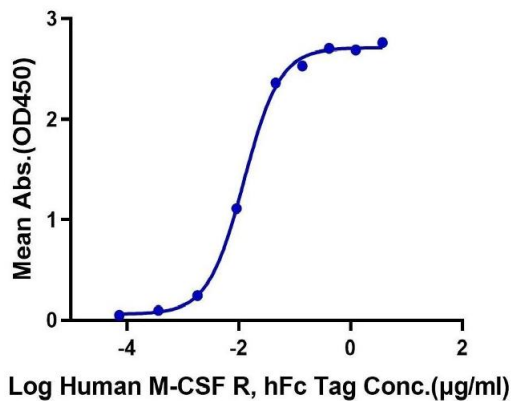
### SDS-PAGE

**Image 2.** Human M-CSF R on Tris-Bis PAGE under reduced condition. The purity is greater than 95 % .



### Human M-CSF R, hFc Tag ELISA

0.05µg Human M-CSF, His Tag Per Well



### ELISA

**Image 3.** Immobilized Human M-CSF at 0.5 µg/mL (100 µ L/Well) on the plate. Dose response curve for Human M-CSF R, hFc Tag with the EC50 12.4 ng/mL determined by ELISA.

Please check the [product details page](#) for more images. Overall 4 images are available for ABIN7274424.