

Datasheet for ABIN7274427

CSF1R Protein (AA 20-512) (His-Avi Tag)**3** Images[Go to Product page](#)

Overview

Quantity:	100 µg
Target:	CSF1R
Protein Characteristics:	AA 20-512
Origin:	Human
Source:	HEK-293 Cells
Protein Type:	Recombinant
Purification tag / Conjugate:	This CSF1R protein is labelled with His-Avi Tag.

Product Details

Purpose:	Human M-CSF R/CSF1R/CD115 Protein
Sequence:	Ile20-Glu512
Characteristics:	Recombinant Human M-CSF R/CSF1R/CD115 Protein is expressed from HEK293 with His tag and Avi tag at the C-Terminus. It contains Ile20-Glu512.
Purity:	> 95 % as determined by Tris-Bis PAGE, > 95 % as determined by HPLC
Sterility:	0.22 µm filtered
Endotoxin Level:	Less than 1EU per µg by the LAL method.
Biological Activity Comment:	Immobilized Human M-CSF R, His Tag at 1µg/ml (100µl/Well). Dose response curve for Anti-M-CSF R Antibody, hFc Tag with the EC50 of 12.4ng/ml determined by ELISA. See testing image for detail.

Target Details

Target:	CSF1R
Alternative Name:	M-CSF R (CSF1R Products)
Background:	CSF1R also known as M-CSF receptor, the product of the c-fms proto-oncogene, is a member of the type III subfamily of receptor tyrosine kinases that also includes receptors for SCF and PDGF. These receptors each contain five immunoglobulin-like domains in their extracellular domain (ECD) and a split kinase domain in their intracellular region. CSF1R is tyrosine-protein kinase that acts as cell-surface receptor for CSF1 and IL34 and plays an essential role in the regulation of survival, proliferation and differentiation of hematopoietic precursor cells, especially mononuclear phagocytes, such as macrophages and monocytes.
Molecular Weight:	57.4 kDa. Due to glycosylation, the protein migrates to 75-105 kDa based on Tris-Bis PAGE result.
Pathways:	RTK Signaling , Inositol Metabolic Process , Cell-Cell Junction Organization

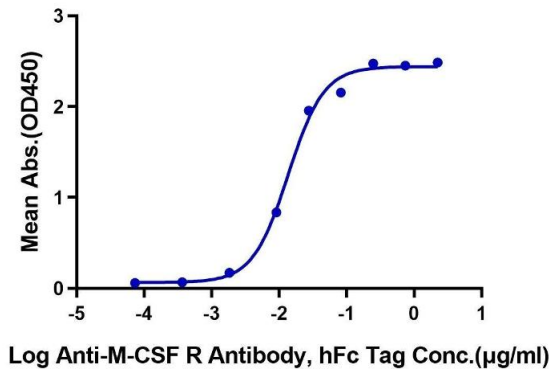
Application Details

Restrictions:	For Research Use only
---------------	-----------------------

Handling

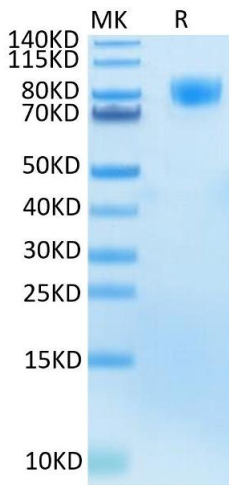
Format:	Lyophilized
Reconstitution:	Centrifuge the tube before opening. Reconstituting to a concentration more than 100 µg/mL is recommended. Dissolve the lyophilized protein in distilled water.
Buffer:	Lyophilized from 0.22µm filtered solution in PBS (pH 7.4). Normally 8 % trehalose is added as protectant before lyophilization.
Storage:	-20 °C,-80 °C
Storage Comment:	-20 to -80°C for 12 months as supplied from date of receipt., -80°C for 3-6 months after reconstitution., 2-8°C for 2-7 days after reconstitution., Recommend to aliquot the protein into smaller quantities for optimal storage. Please minimize freeze-thaw cycles.
Expiry Date:	12 months

Human M-CSF R, His Tag ELISA
0.1µg Human M-CSF R, His Tag Per Well



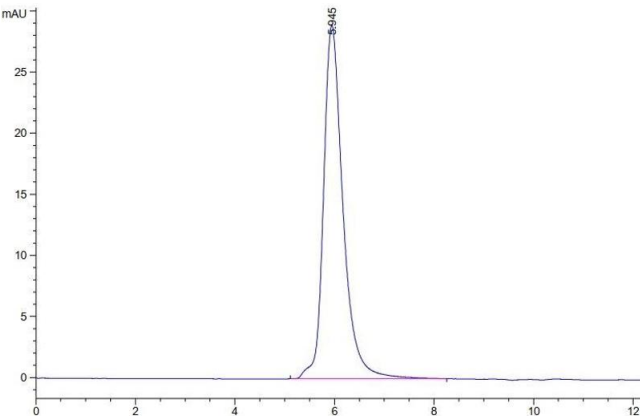
ELISA

Image 1. Immobilized Human M-CSF R, His Tag at 1 µg/mL (100 µL/Well). Dose response curve for Anti-Human M-CSF R Antibody, hFc Tag with the EC50 of 12.4 ng/mL determined by ELISA.



SDS-PAGE

Image 2. Human M-CSF R Tris-Bis PAGE under reduced condition. The purity is greater than 95 % .



Size-exclusion chromatography-High Pressure Liquid Chromatography

Image 3. The purity of Human M-CSF R is greater than 95 % as determined by SEC-HPLC.