



[Go to Product page](#)

Datasheet for ABIN7274436

CTLA4 Protein (AA 36-161) (Fc Tag)

6 Images

Overview

Quantity:	100 µg
Target:	CTLA4
Protein Characteristics:	AA 36-161
Origin:	Human
Source:	HEK-293 Cells
Protein Type:	Recombinant
Purification tag / Conjugate:	This CTLA4 protein is labelled with Fc Tag.

Product Details

Purpose:	Human CTLA-4/CD152 Protein
Sequence:	Lys36-Asp161
Characteristics:	Recombinant Human CTLA-4/CD152 Protein is expressed from HEK293 with hFc tag at the C-Terminus. It contains Lys36-Asp161.
Purity:	> 95 % as determined by Tris-Bis PAGE, > 95 % as determined by HPLC
Sterility:	0.22 µm filtered
Endotoxin Level:	Less than 1EU per µg by the LAL method.
Biological Activity Comment:	Immobilized Human B7-2, His Tag at 0.5µg/ml (100µl/Well) on the plate. Dose response curve for Human CTLA-4, hFc Tag with the EC50 of 0.12µg/ml determined by ELISA. The affinity constant of 1.1nM as determined in SPR assay (Biacore T200). See testing image for detail.

Target Details

Target:	CTLA4
Alternative Name:	CTLA-4 (CTLA4 Products)
Background:	CTLA-4 (cytotoxic T-lymphocyte-associated protein 4), also known as CD152, is a protein receptor that, functioning as an immune checkpoint, downregulates immune responses. CTLA4 is constitutively expressed in regulatory T cells but only upregulated in conventional T cells after activation - a phenomenon which is particularly notable in cancers. It acts as an "off" switch when bound to CD80 or CD86 on the surface of antigen-presenting cells.
Molecular Weight:	40.1 kDa. Due to glycosylation, the protein migrates to 50-55 kDa based on Tris-Bis PAGE result.
Pathways:	Cancer Immune Checkpoints

Application Details

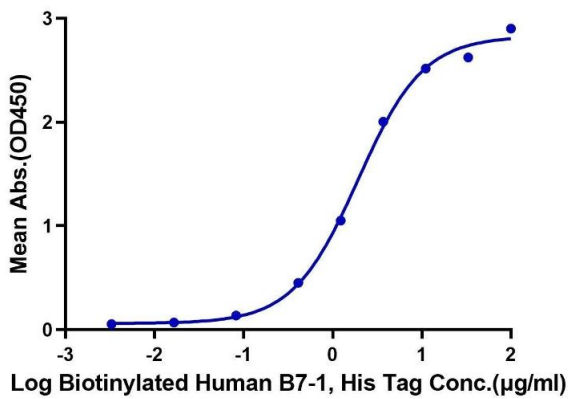
Restrictions:	For Research Use only
---------------	-----------------------

Handling

Format:	Lyophilized
Reconstitution:	Centrifuge the tube before opening. Reconstituting to a concentration more than 100 µg/mL is recommended. Dissolve the lyophilized protein in distilled water.
Buffer:	Lyophilized from 0.22µm filtered solution in PBS (pH 7.4). Normally 8 % trehalose is added as protectant before lyophilization.
Storage:	-20 °C,-80 °C
Storage Comment:	-20 to -80°C for 12 months as supplied from date of receipt., -80°C for 3-6 months after reconstitution., 2-8°C for 2-7 days after reconstitution., Recommend to aliquot the protein into smaller quantities for optimal storage. Please minimize freeze-thaw cycles.
Expiry Date:	12 months

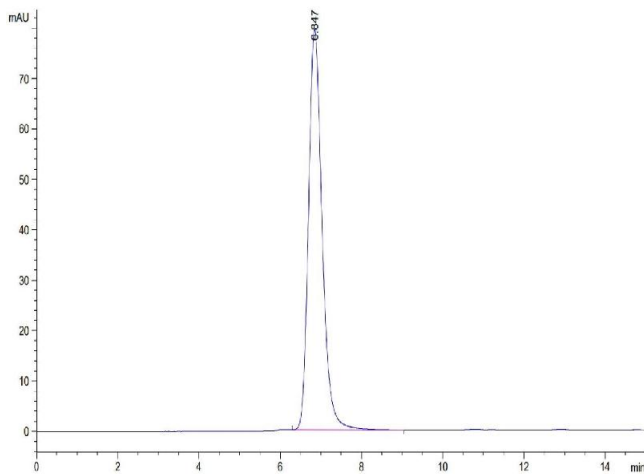
Human CTLA-4, hFc Tag ELISA

0.2µg Human CTLA-4, hFc Tag Per Well



ELISA

Image 1. Immobilized Human CTLA-4, hFc Tag at 2 µg/mL (100 µL/well) on the plate. Dose response curve for Biotinylated Human B7-1, His Tag with the EC50 of 1.9 µg/mL determined by ELISA.

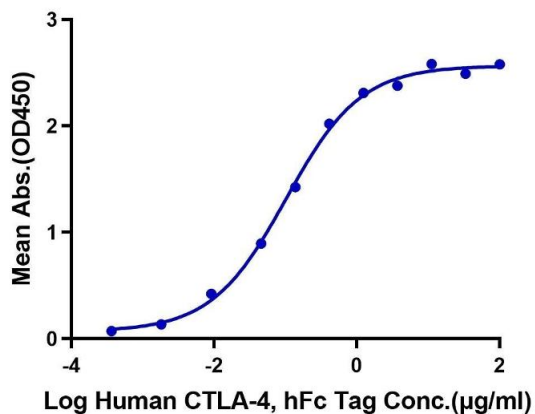


Size-exclusion chromatography-High Pressure Liquid Chromatography

Image 2. The purity of Human CTLA-4 is greater than 95 % as determined by SEC-HPLC.

Human CTLA-4, hFc Tag ELISA

0.1µg Biotinylated Human B7-1, His Tag Per Well



ELISA

Image 3. Immobilized Biotinylated Human B7-1, His Tag at 1 µg/mL (100 µL/Well) on the plate. Dose response curve for Human CTLA-4, hFc Tag with the EC50 0.1 µg/mL determined by ELISA.

Please check the [product details page](#) for more images. Overall 6 images are available for ABIN7274436.