

Datasheet for ABIN7274450

**CXCL13 Protein (AA 22-109) (Fc Tag)**[Go to Product page](#)**2** Images

## Overview

Quantity:	100 µg
Target:	CXCL13
Protein Characteristics:	AA 22-109
Origin:	Mouse
Source:	HEK-293 Cells
Protein Type:	Recombinant
Purification tag / Conjugate:	This CXCL13 protein is labelled with Fc Tag.

## Product Details

Purpose:	Mouse CXCL13/BCA-1 Protein
Sequence:	Ile22-Ala109
Characteristics:	Recombinant Mouse CXCL13/BCA-1 Protein is expressed from HEK293 with hFc tag at the N-Terminus. It contains Ile22-Ala109.
Purity:	> 95 % as determined by Tris-Bis PAGE, > 95 % as determined by HPLC
Sterility:	0.22 µm filtered
Endotoxin Level:	Less than 1EU per µg by the LAL method.

## Target Details

Target:	CXCL13
Alternative Name:	CXCL13 ( <a href="#">CXCL13 Products</a> )

Target Details

Background:	Recent studies have implicated chemokines in microglial activation and pathogenesis of neuropathic pain. C-X-C motif chemokine 13 (CXCL13) is a B lymphocyte chemoattractant that activates CXCR5. Using the spinal nerve ligation (SNL) model of neuropathic pain, CXCL13 was persistently upregulated in spinal cord neurons after SNL, resulting in spinal astrocyte activation via CXCR5 in mice.
Molecular Weight:	37.1 kDa. Due to glycosylation, the protein migrates to 40-50 kDa based on Tris-Bis PAGE result.
UniProt:	<a href="#">O55038</a>

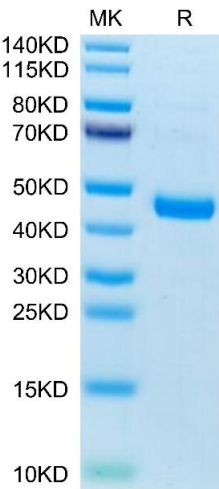
Application Details

Restrictions:	For Research Use only
---------------	-----------------------

Handling

Format:	Liquid
Buffer:	Supplied as 0.22µm filtered solution in 50 mM Tris, 500 mM NaCl ( pH 7.5).
Storage:	-80 °C
Storage Comment:	Valid for 12 months from date of receipt when stored at -80°C., Recommend to aliquot the protein into smaller quantities for optimal storage. Please minimize freeze-thaw cycles.
Expiry Date:	12 months

Images



SDS-PAGE

**Image 1.** Mouse CXCL13 on Tris-Bis PAGE under reduced condition. The purity is greater than 95 % .

Size-exclusion chromatography-High Pressure Liquid Chromatography

**Image 2.** The purity of Mouse CXCL13 is greater than 95 % as determined by SEC-HPLC.

