

Datasheet for ABIN7274480

**DLL3 Protein (AA 27-477) (His tag)****4** Images[Go to Product page](#)

## Overview

Quantity:	100 µg
Target:	DLL3
Protein Characteristics:	AA 27-477
Origin:	Cynomolgus
Source:	HEK-293 Cells
Protein Type:	Recombinant
Purification tag / Conjugate:	This DLL3 protein is labelled with His tag.

## Product Details

Purpose:	Cynomolgus DLL3 Protein
Sequence:	Ala27-Ala477
Characteristics:	Recombinant Cynomolgus DLL3 Protein is expressed from HEK293 with His tag at the C-Terminus. It contains Ala27-Ala477.
Purity:	> 90 % as determined by Tris-Bis PAGE, > 90 % as determined by SEC-HPLC
Sterility:	0.22 µm filtered
Endotoxin Level:	Less than 1EU per µg by the LAL method.
Biological Activity Comment:	Immobilized Cynomolgus DLL3, His Tag at 0.2µg/ml (100µl/well) on the plate. Dose response curve for Anti-DLL3 Antibody, hFc Tag with the EC50 of 5.4ng/ml determined by ELISA. See testing image for detail.

## Target Details

Target:	DLL3
Alternative Name:	DLL3 ( <a href="#">DLL3 Products</a> )
Background:	Delta-like protein 3 (DLL3) is a transmembrane protein that belongs to the Delta/Serrate/Lag-2 (DSL) family of Notch ligands. DLL3 inhibits primary neurogenesis. May be required to divert neurons along a specific differentiation pathway. Plays a role in the formation of somite boundaries during segmentation of the paraxial mesoderm (By similarity).
Molecular Weight:	48.80 kDa. Due to glycosylation, the protein migrates to 52-62 kDa based on Tris-Bis PAGE result.
UniProt:	<a href="#">A0A2K5WSR1</a>
Pathways:	<a href="#">Notch Signaling</a>

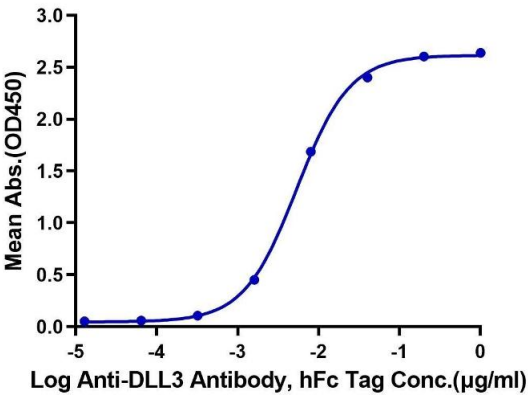
## Application Details

Restrictions:	For Research Use only
---------------	-----------------------

## Handling

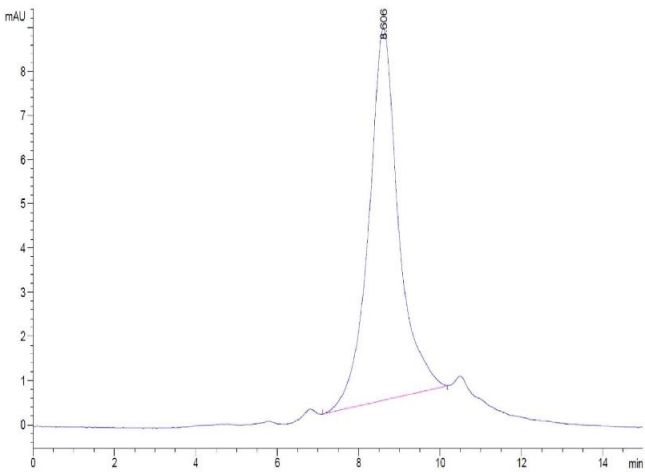
Format:	Liquid
Buffer:	Supplied as 0.22µm filtered solution in 20 mM Tris, 200 mM NaCl, 200 mM L-arginine ( pH 8.5).
Storage:	-80 °C
Storage Comment:	Valid for 12 months from date of receipt when stored at -80°C., Recommend to aliquot the protein into smaller quantities for optimal storage. Please minimize freeze-thaw cycles.
Expiry Date:	12 months

**Cynomolgus DLL3, His Tag ELISA**  
0.02µg Cynomolgus DLL3, His Tag Per Well



#### ELISA

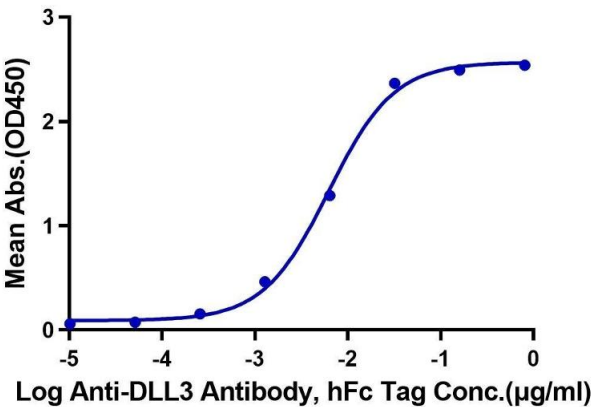
**Image 1.** Immobilized Cynomolgus DLL3, His Tag at 0.2 µg/mL (100 µL/well) on the plate. Dose response curve for Anti-DLL3 Antibody, hFc Tag with the EC50 of 5.4 ng/mL determined by ELISA.



#### Size-exclusion chromatography-High Pressure Liquid Chromatography

**Image 2.** The purity of Cynomolgus DLL3 Protein is greater than 95 % as determined by SEC-HPLC.

**Cynomolgus DLL3, His Tag ELISA**  
0.02µg Cynomolgus DLL3, His Tag Per Well



#### ELISA

**Image 3.** Immobilized Cynomolgus DLL3, His Tag at 0.2 µg/mL (100 µL/Well) on the plate. Dose response curve for Anti-DLL3 Antibody, hFc Tag with the EC50 of 6.2 ng/mL determined by ELISA.

Please check the [product details page](#) for more images. Overall 4 images are available for ABIN7274480.