

Datasheet for ABIN7274484

DLL3 Protein (AA 27-215) (His-DYKDDDDK Tag)**3** Images[Go to Product page](#)

Overview

Quantity:	100 µg
Target:	DLL3
Protein Characteristics:	AA 27-215
Origin:	Human
Source:	HEK-293 Cells
Protein Type:	Recombinant
Purification tag / Conjugate:	This DLL3 protein is labelled with His-DYKDDDDK Tag.

Product Details

Purpose:	Human DLL3 (27-215) Protein
Sequence:	Ala27-Glu215
Characteristics:	Recombinant Human DLL3 (27-215) Protein is expressed from HEK293 with His tag and Flag tag at the N-Terminus. It contains Ala27-Glu215.
Purity:	> 95 % as determined by Tris-Bis PAGE, > 95 % as determined by HPLC
Sterility:	0.22 µm filtered
Endotoxin Level:	Less than 1EU per µg by the LAL method.
Biological Activity Comment:	Immobilized Human DLL3 (27-215) , His Tag at 0.2µg/ml (100µl/Well) on the plate. Dose response curve for Anti-DLL3 Antibody, hFc Tag with the EC50 of 7.2ng/ml determined by ELISA. See testing image for detail.

Target Details

Target:	DLL3
Alternative Name:	DLL3 (DLL3 Products)
Background:	Delta-like protein 3 (DLL3) is a transmembrane protein that belongs to the Delta/Serrate/Lag-2 (DSL) family of Notch ligands. DLL3 inhibits primary neurogenesis. May be required to divert neurons along a specific differentiation pathway. Plays a role in the formation of somite boundaries during segmentation of the paraxial mesoderm (By similarity).
Molecular Weight:	22.30 kDa. Due to glycosylation, the protein migrates to 24-25 kDa based on Tris-Bis PAGE result.
Pathways:	Notch Signaling

Application Details

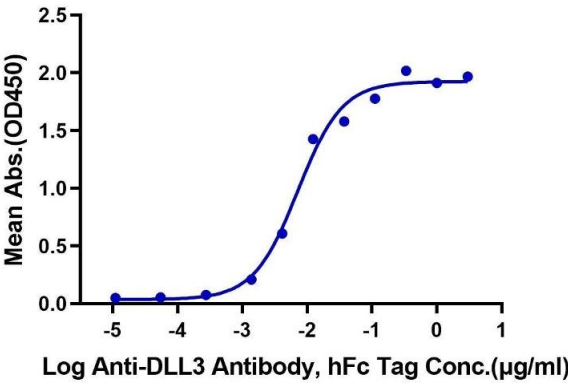
Restrictions:	For Research Use only
---------------	-----------------------

Handling

Format:	Liquid
Buffer:	Supplied as 0.22µm filtered solution in PBS, 360 mM NaCl, 200 mM L-arginine (pH 8.0).
Storage:	-80 °C
Storage Comment:	Valid for 12 months from date of receipt when stored at -80°C., Recommend to aliquot the protein into smaller quantities for optimal storage. Please minimize freeze-thaw cycles.
Expiry Date:	12 months

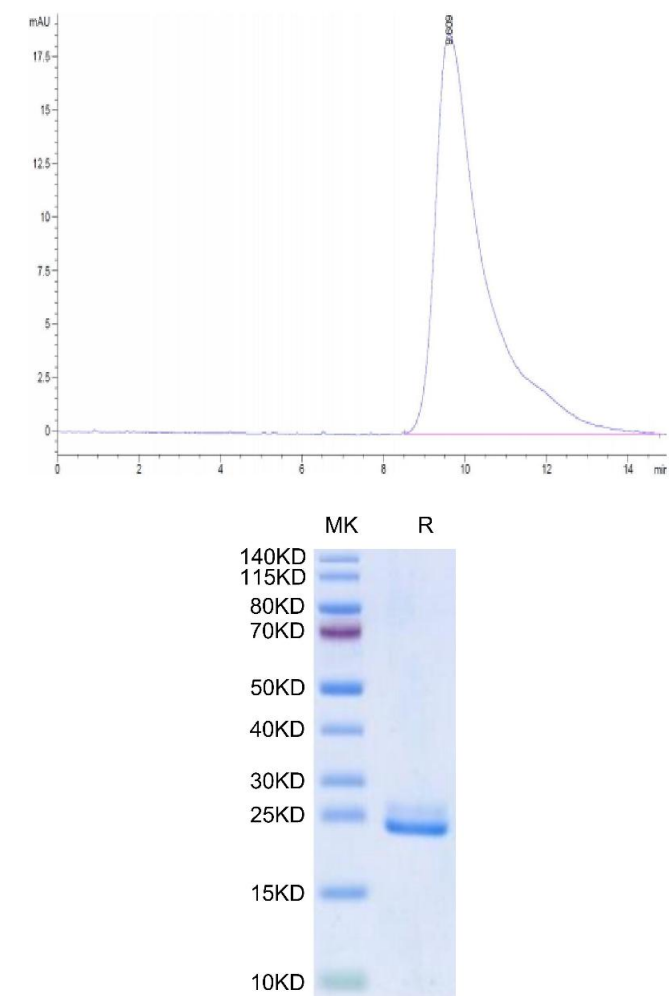
Images

Human DLL3 (27-215), His Tag ELISA
0.02µg Human DLL3 (27-215), His Tag Per Well



ELISA

Image 1. Immobilized Human DLL3 (27-215), His Tag at 0.2 µg/mL (100 µL/Well) on the plate. Dose response curve for Anti-DLL3 Antibody, hFc Tag with the EC50 of 7.2 ng/mL determined by ELISA.



Size-exclusion chromatography-High Pressure Liquid Chromatography

Image 2. The purity of Human DLL3 (27-215) is greater than 95 % as determined by SEC-HPLC.

SDS-PAGE

Image 3. Human DLL3 (27-215) on Tris-Bis PAGE under reduced condition. The purity is greater than 95 % .