



[Go to Product page](#)

Datasheet for ABIN7274505

AIMP1 Protein (AA 2-312) (His tag)

2 Images

Overview

Quantity:	100 µg
Target:	AIMP1
Protein Characteristics:	AA 2-312
Origin:	Human
Source:	Escherichia coli (E. coli)
Protein Type:	Recombinant
Purification tag / Conjugate:	This AIMP1 protein is labelled with His tag.

Product Details

Purpose:	Human EMAP-II/AIMP1 Protein
Sequence:	Ala2-Lys312
Characteristics:	Recombinant Human EMAP-II/AIMP1 Protein is expressed from E.coli with His tag at the N-Terminus.It contains Ala2-Lys312.
Purity:	> 95 % as determined by Tris-Bis PAGE
Sterility:	0.22 µm filtered
Endotoxin Level:	Less than 1EU per µg by the LAL method.
Biological Activity Comment:	Immobilized Human EMAP-II, His Tag at 2µg/ml (100µl/well) on the plate. Dose response curve for Anti-EMAP-II Antibody, hFc Tag with the EC50 of 0.18ug/ml determined by ELISA. See testing image for detail.

Target Details

Target:	AIMP1
Alternative Name:	EMAP-II (AIMP1 Products)
Background:	The potent antiangiogenic and proinflammatory protein Endothelial Monocyte Activating Polypeptide II (EMAP II) has been described as a mediator of pulmonary vascular and alveolar formation and its expression is inversely related to the periods of vascularization and alveolarization in the developing lung. Hence the study of EMAP II could play a vital role in studying and devising appropriate therapeutics for diseases of aberrant lung development, such as BPD.
Molecular Weight:	35.4 kDa. The protein migrates to 40-45 kDa based on Tris-Bis PAGE result.

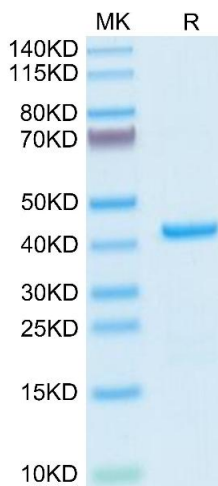
Application Details

Restrictions:	For Research Use only
---------------	-----------------------

Handling

Format:	Liquid
Buffer:	Supplied as 0.22µm filtered solution in 20 mM Tris, 500 mM NaCl, 10 % Glycerol (pH 8.0).
Storage:	-80 °C
Storage Comment:	Valid for 12 months from date of receipt when stored at -80°C., Recommend to aliquot the protein into smaller quantities for optimal storage. Please minimize freeze-thaw cycles.
Expiry Date:	12 months

Images

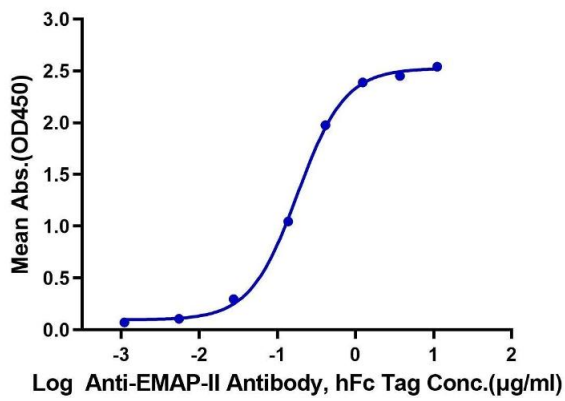


SDS-PAGE

Image 1. Human EMAP-II on Tris-Bis PAGE under reduced condition. The purity is greater than 95 % .

Human EMAP-II, His Tag ELISA

0.2µg Human EMAP-II, His Tag Per Well



ELISA

Image 2. Immobilized Human EMAP-II, His Tag at 2 µg/mL (100 µL/well) on the plate. Dose response curve for Anti-EMAP-II Antibody, hFc Tag with the EC50 of 0.18 µg/mL determined by ELISA.