

Datasheet for ABIN7274512

FBLN3 Protein (AA 18-493) (His tag)**3** Images[Go to Product page](#)

Overview

Quantity:	100 µg
Target:	FBLN3
Protein Characteristics:	AA 18-493
Origin:	Human
Source:	HEK-293 Cells
Protein Type:	Recombinant
Purification tag / Conjugate:	This FBLN3 protein is labelled with His tag.

Product Details

Purpose:	Human EFEMP1 Protein
Sequence:	Gln18-Phe493
Characteristics:	Recombinant Human EFEMP1 Protein is expressed from HEK293 with His tag at the N-Terminus. It contains Gln18-Phe493.
Purity:	> 95 % as determined by Tris-Bis PAGE, > 95 % as determined by HPLC
Sterility:	0.22 µm filtered
Endotoxin Level:	Less than 1EU per µg by the LAL method.
Biological Activity Comment:	Immobilized Human EFEMP1, His Tag at 1 µg/ml (100 µl/Well) on the plate. Dose response curve for Anti-EFEMP1 Antibody, hFc Tag with the EC50 of 35.1 ng/ml determined by ELISA. See testing image for detail.

Target Details

Target:	FBLN3
Alternative Name:	EFEMP1 (FBLN3 Products)
Background:	Transversalis fascia EFEMP1, TIMP3 and ELN expressions were decreased, but MMP9 expression was increased in IH patients compared with controls. In IH patients, EFEMP1 was not correlated with TIMP3, but positively correlated with ELN and negatively correlated with MMP9, TIMP3 negatively correlated with MMP9, but positively correlated with ELN. In addition, EFEMP1 suppressed L929 cell migration and invasion.
Molecular Weight:	53.9 kDa. Due to glycosylation, the protein migrates to 55-60 kDa based on Tris-Bis PAGE result.
Pathways:	EGFR Signaling Pathway

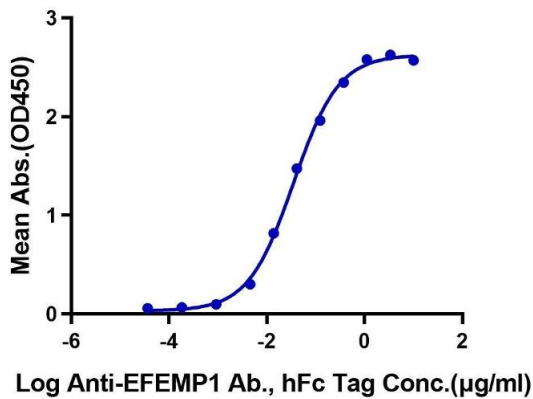
Application Details

Restrictions:	For Research Use only
---------------	-----------------------

Handling

Format:	Lyophilized
Reconstitution:	Centrifuge the tube before opening. Reconstituting to a concentration more than 100 µg/mL is recommended. Dissolve the lyophilized protein in distilled water.
Buffer:	Lyophilized from 0.22µm filtered solution in PBS (pH 7.4). Normally 8 % trehalose is added as protectant before lyophilization.
Storage:	-20 °C,-80 °C
Storage Comment:	-20 to -80°C for 12 months as supplied from date of receipt.,-80°C for 3-6 months after reconstitution.,2-8°C for 2-7 days after reconstitution.,Recommend to aliquot the protein into smaller quantities for optimal storage. Please minimize freeze-thaw cycles.
Expiry Date:	12 months

Human EFEMP1, His Tag ELISA
0.1µg Human EFEMP1, His Tag Per Well

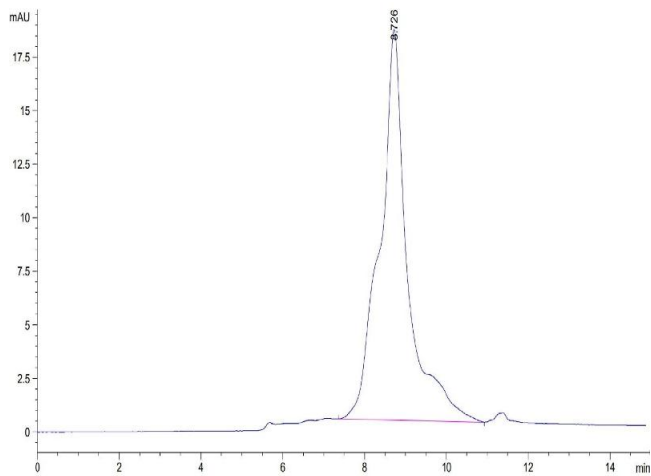


ELISA

Image 1. Immobilized Human EFEMP1, His Tag at 1 µg/mL (100 µL/Well) on the plate. Dose response curve for Anti-EFEMP1 Antibody, hFc Tag with the EC50 of 35.1 ng/mL determined by ELISA.

Size-exclusion chromatography-High Pressure Liquid Chromatography

Image 2. The purity of Human EFEMP1 is greater than 95 % as determined by SEC-HPLC.



SDS-PAGE

Image 3. Human EFEMP1 on Tris-Bis PAGE under reduced condition. The purity is greater than 95 % .

