

Datasheet for ABIN7274521  
**EGFR Protein (AA 25-645) (His tag)**[Go to Product page](#)

## 2 Images

## Overview

Quantity:	100 µg
Target:	EGFR
Protein Characteristics:	AA 25-645
Origin:	Rhesus Monkey
Source:	HEK-293 Cells
Protein Type:	Recombinant
Purification tag / Conjugate:	This EGFR protein is labelled with His tag.

## Product Details

Purpose:	Rhesus macaque EGFR Protein
Sequence:	Leu25-Ser645
Characteristics:	Recombinant Rhesus macaque EGFR Protein is expressed from HEK293 with His tag at the C-Terminus. It contains Leu25-Ser645.
Purity:	> 95 % as determined by Tris-Bis PAGE, > 95 % as determined by HPLC
Sterility:	0.22 µm filtered
Endotoxin Level:	Less than 1EU per µg by the LAL method.

## Target Details

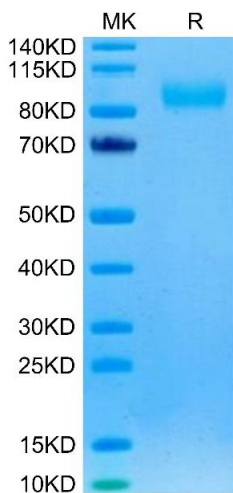
Target:	EGFR
Alternative Name:	EGFR ( <a href="#">EGFR Products</a> )

## Target Details

Background:	The epidermal growth factor receptor is a transmembrane protein that is a receptor for members of the epidermal growth factor family of extracellular protein ligands. The epidermal growth factor receptor is a member of the ErbB family of receptors, a subfamily of four closely related receptor tyrosine kinases: EGFR, HER2/neu, Her 3 and Her 4. Receptor tyrosine kinase binding ligands of the EGF family and activating several signaling cascades to convert extracellular cues into appropriate cellular responses.
Molecular Weight:	69.8 kDa. Due to glycosylation, the protein migrates to 85-100 kDa based on Tris-Bis PAGE result.
UniProt:	<a href="#">P55245</a>
Pathways:	<a href="#">NF-kappaB Signaling</a> , <a href="#">RTK Signaling</a> , <a href="#">Fc-epsilon Receptor Signaling Pathway</a> , <a href="#">EGFR Signaling Pathway</a> , <a href="#">Neurotrophin Signaling Pathway</a> , <a href="#">Stem Cell Maintenance</a> , <a href="#">Hepatitis C</a> , <a href="#">Positive Regulation of Response to DNA Damage Stimulus</a> , <a href="#">Interaction of EGFR with phospholipase C-gamma</a> , <a href="#">Thromboxane A2 Receptor Signaling</a> , <a href="#">EGFR Downregulation</a> , <a href="#">S100 Proteins</a>

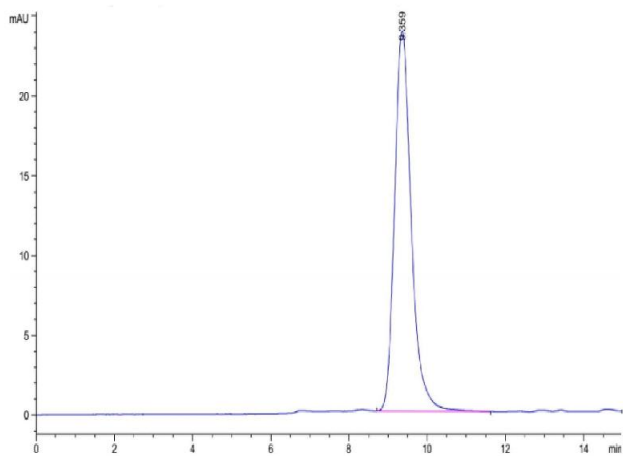
## Application Details

Restrictions:	For Research Use only
Handling	
Format:	Lyophilized
Reconstitution:	Centrifuge the tube before opening. Reconstituting to a concentration more than 100 µg/mL is recommended. Dissolve the lyophilized protein in distilled water.
Buffer:	Lyophilized from 0.22µm filtered solution in PBS ( pH 7.4). Normally 8 % trehalose is added as protectant before lyophilization.
Storage:	-20 °C,-80 °C
Storage Comment:	-20 to -80°C for 12 months as supplied from date of receipt.,-80°C for 3-6 months after reconstitution.,2-8°C for 2-7 days after reconstitution.,Recommend to aliquot the protein into smaller quantities for optimal storage. Please minimize freeze-thaw cycles.
Expiry Date:	12 months



SDS-PAGE

**Image 1.** Rhesus macaque EGFR on Tris-Bis PAGE under reduced condition. The purity is greater than 95 % .



Size-exclusion chromatography-High Pressure Liquid Chromatography

**Image 2.** The purity of Rhesus macaque EGFR is greater than 95 % as determined by SEC-HPLC.