



[Go to Product page](#)

Datasheet for ABIN7274524

EGFR Protein (AA 25-645) (Fc Tag)

3 Images

Overview

Quantity:	100 µg
Target:	EGFR
Protein Characteristics:	AA 25-645
Origin:	Human
Source:	HEK-293 Cells
Protein Type:	Recombinant
Purification tag / Conjugate:	This EGFR protein is labelled with Fc Tag.

Product Details

Purpose:	Human EGFR/HER1 Protein
Sequence:	Leu25-Ser645
Characteristics:	Recombinant Human EGFR/HER1 Protein is expressed from HEK293 with hFc tag at the C-Terminus. It contains Leu25-Ser645.
Purity:	> 95 % as determined by Tris-Bis PAGE, > 95 % as determined by HPLC
Sterility:	0.22 µm filtered
Endotoxin Level:	Less than 1EU per µg by the LAL method.
Biological Activity Comment:	Immobilized Human EGF at 2µg/ml (100µl/well) on the plate. Dose response curve for Human EGFR, hFc Tag with the EC50 of 81.0ng/ml determined by ELISA. See testing image for detail.

Target Details

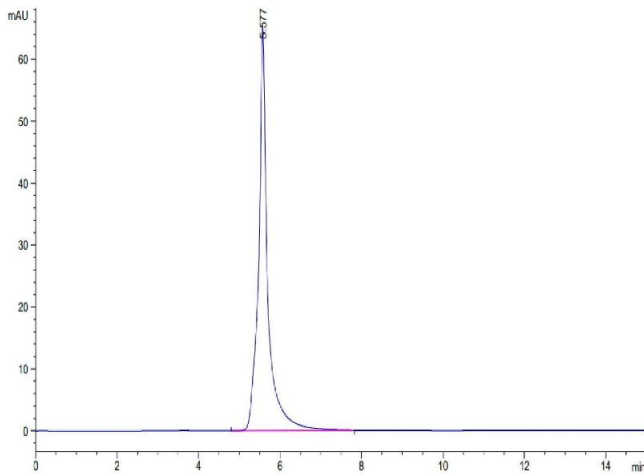
Target:	EGFR
Alternative Name:	EGFR (EGFR Products)
Background:	The epidermal growth factor receptor is a transmembrane protein that is a receptor for members of the epidermal growth factor family of extracellular protein ligands. The epidermal growth factor receptor is a member of the ErbB family of receptors, a subfamily of four closely related receptor tyrosine kinases: EGFR, HER2/neu, Her 3 and Her 4. Receptor tyrosine kinase binding ligands of the EGF family and activating several signaling cascades to convert extracellular cues into appropriate cellular responses.
Molecular Weight:	95.2 kDa. Due to glycosylation, the protein migrates to 110-140 kDa based on Tris-Bis PAGE result.
UniProt:	P00533
Pathways:	NF-kappaB Signaling , RTK Signaling , Fc-epsilon Receptor Signaling Pathway , EGFR Signaling Pathway , Neurotrophin Signaling Pathway , Stem Cell Maintenance , Hepatitis C , Positive Regulation of Response to DNA Damage Stimulus , Interaction of EGFR with phospholipase C-gamma , Thromboxane A2 Receptor Signaling , EGFR Downregulation , S100 Proteins

Application Details

Restrictions: For Research Use only

Handling

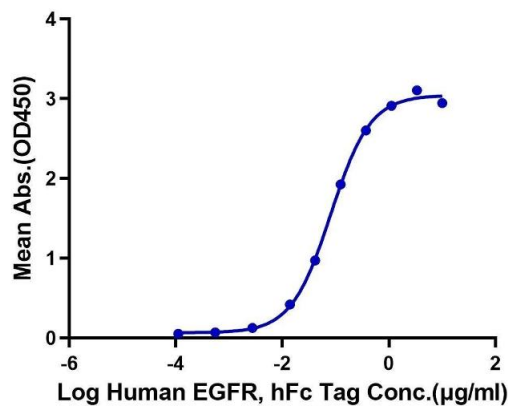
Format:	Lyophilized
Reconstitution:	Centrifuge the tube before opening. Reconstituting to a concentration more than 100 µg/mL is recommended. Dissolve the lyophilized protein in distilled water.
Buffer:	Lyophilized from 0.22µm filtered solution in PBS (pH 7.4). Normally 8 % trehalose is added as protectant before lyophilization.
Storage:	-20 °C,-80 °C
Storage Comment:	-20 to -80°C for 12 months as supplied from date of receipt., -80°C for 3-6 months after reconstitution., 2-8°C for 2-7 days after reconstitution., Recommend to aliquot the protein into smaller quantities for optimal storage. Please minimize freeze-thaw cycles.
Expiry Date:	12 months



Size-exclusion chromatography-High Pressure Liquid Chromatography

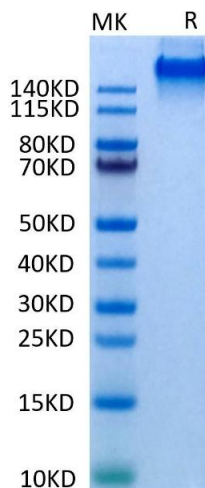
Image 1. The purity of Human EGFR/HER1 is greater than 95 % as determined by SEC-HPLC.

Human EGFR, hFc Tag ELISA
0.2µg Human EGF, No Tag Per Well



ELISA

Image 2. Immobilized Human EGF at 2 µg/mL (100 µL/well) on the plate. Dose response curve for Human EGFR, hFc Tag with the EC50 of 81.0 ng/mL determined by ELISA.



SDS-PAGE

Image 3. Human EGFR/HER1 on Tris-Bis PAGE under reduced condition. The purity is greater than 95 % .