

Datasheet for ABIN7274555

**EPH Receptor A10 Protein (EPHA10) (AA 34-565) (His tag)**[Go to Product page](#)**2** Images

## Overview

Quantity:	100 µg
Target:	EPH Receptor A10 (EPHA10)
Protein Characteristics:	AA 34-565
Origin:	Human
Source:	HEK-293 Cells
Protein Type:	Recombinant
Purification tag / Conjugate:	This EPH Receptor A10 protein is labelled with His tag.

## Product Details

Purpose:	Human EPHA10 Protein
Sequence:	Glu34-Ala565
Characteristics:	Recombinant Human EPHA10 Protein is expressed from HEK293 with His tag at the C-Terminus. It contains Glu34-Ala565.
Purity:	> 95 % as determined by Tris-Bis PAGE, > 95 % as determined by HPLC
Sterility:	0.22 µm filtered
Endotoxin Level:	Less than 1EU per µg by the LAL method.

## Target Details

Target:	EPH Receptor A10 (EPHA10)
Alternative Name:	EPHA10 ( <a href="#">EPHA10 Products</a> )

## Target Details

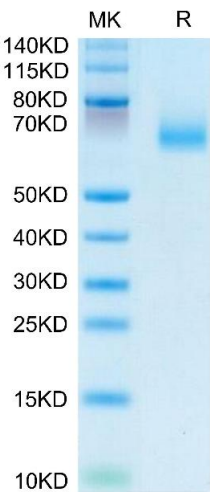
Background:	EphA10 (erythropoietin-producing hepatocellular carcinoma receptor A10) is a catalytically defective receptor protein tyrosine kinase in the ephrin receptor family. EphA10 was elevated and higher in tumor tissues than in normal tissues in some cancer types, including pancreatic cancer. EphA10 silencing reduced the proliferation, migration, and adhesion of MIA PaCa-2 and AsPC-1 pancreatic cancer cells. EphA10 plays a pivotal role in the tumorigenesis of pancreatic epithelial cells and is a novel therapeutic target for pancreatic cancer.
Molecular Weight:	58.8 kDa. Due to glycosylation, the protein migrates to 60-70 kDa based on Tris-Bis PAGE result.
Pathways:	<a href="#">RTK Signaling</a>

## Application Details

Restrictions:	For Research Use only
---------------	-----------------------

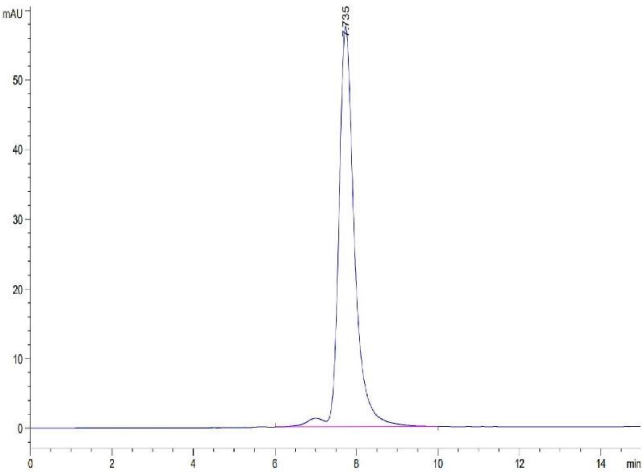
## Handling

Format:	Lyophilized
Reconstitution:	Centrifuge the tube before opening. Reconstituting to a concentration more than 100 µg/mL is recommended. Dissolve the lyophilized protein in distilled water.
Buffer:	Lyophilized from 0.22µm filtered solution in PBS ( pH 7.4). Normally 8 % trehalose is added as protectant before lyophilization.
Storage:	-20 °C,-80 °C
Storage Comment:	-20 to -80°C for 12 months as supplied from date of receipt.,-80°C for 3-6 months after reconstitution.,-2-8°C for 2-7 days after reconstitution.,Recommend to aliquot the protein into smaller quantities for optimal storage. Please minimize freeze-thaw cycles.
Expiry Date:	12 months



SDS-PAGE

**Image 1.** Human EPHA10 on Tris-Bis PAGE under reduced condition. The purity is greater than 95 % .



Size-exclusion chromatography-High Pressure Liquid Chromatography

**Image 2.** The purity of Human EPHA10 is greater than 95 % as determined by SEC-HPLC.