

Datasheet for ABIN7274556

EPH Receptor A2 Protein (EPHA2) (AA 24-537) (His tag)[Go to Product page](#)**2** Images

Overview

Quantity:	100 µg
Target:	EPH Receptor A2 (EPHA2)
Protein Characteristics:	AA 24-537
Origin:	Human
Source:	HEK-293 Cells
Protein Type:	Recombinant
Purification tag / Conjugate:	This EPH Receptor A2 protein is labelled with His tag.

Product Details

Purpose:	Human EPHA2 Protein
Sequence:	Ala24-Val537
Characteristics:	Recombinant Human EPHA2 Protein is expressed from HEK293 with His tag at the C-Terminus. It contains Ala24-Val537.
Purity:	> 95 % as determined by Tris-Bis PAGE, > 95 % as determined by HPLC
Sterility:	0.22 µm filtered
Endotoxin Level:	Less than 1EU per µg by the LAL method.

Target Details

Target:	EPH Receptor A2 (EPHA2)
Alternative Name:	EPHA2 (EPHA2 Products)

Target Details

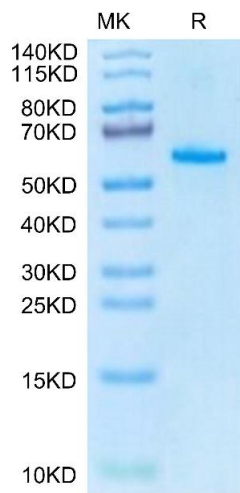
Background:	Erythropoietin-producing hepatocellular receptor A2 (EphA2) receptor tyrosine kinase plays an important role in tissue organization and homeostasis in normal organs. EphA2 is overexpressed in a variety of types of solid tumours with oncogenic functions.
Molecular Weight:	57.56 kDa. Due to glycosylation, the protein migrates to 58-65 kDa based on Tris-Bis PAGE result.
Pathways:	RTK Signaling

Application Details

Restrictions:	For Research Use only
---------------	-----------------------

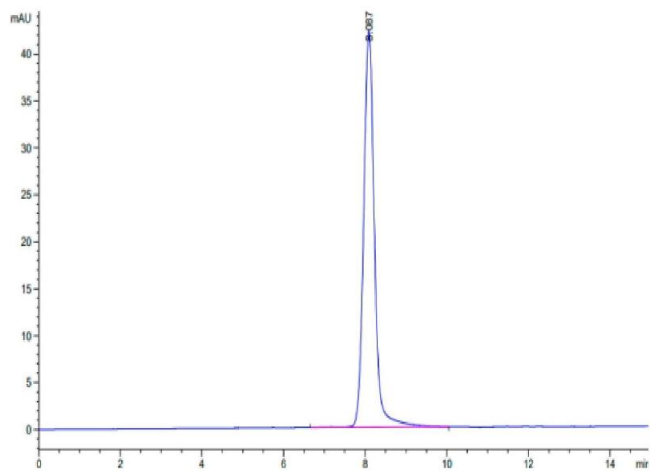
Handling

Format:	Lyophilized
Reconstitution:	Centrifuge the tube before opening. Reconstituting to a concentration more than 100 µg/mL is recommended. Dissolve the lyophilized protein in distilled water.
Buffer:	Lyophilized from 0.22µm filtered solution in PBS (pH 7.4). Normally 8 % trehalose is added as protectant before lyophilization.
Storage:	-20 °C,-80 °C
Storage Comment:	-20 to -80°C for 12 months as supplied from date of receipt.,-80°C for 3-6 months after reconstitution.,2-8°C for 2-7 days after reconstitution.,Recommend to aliquot the protein into smaller quantities for optimal storage. Please minimize freeze-thaw cycles.
Expiry Date:	12 months



SDS-PAGE

Image 1. Human EPHA2 on Tris-Bis PAGE under reduced condition. The purity is greater than 95 % .



Size-exclusion chromatography-High Pressure Liquid Chromatography

Image 2. The purity of Human EPHA2 is greater than 95 % as determined by SEC-HPLC.