

Datasheet for ABIN7274557

EPH Receptor A3 Protein (EPHA3) (AA 21-541) (His tag)[Go to Product page](#)**2** Images

Overview

Quantity:	100 µg
Target:	EPH Receptor A3 (EPHA3)
Protein Characteristics:	AA 21-541
Origin:	Human
Source:	HEK-293 Cells
Protein Type:	Recombinant
Purification tag / Conjugate:	This EPH Receptor A3 protein is labelled with His tag.

Product Details

Purpose:	Human EPHA3 Protein
Sequence:	Glu21-Gln541
Characteristics:	Recombinant Human EPHA3 Protein is expressed from HEK293 with His tag at the C-Terminus. It contains Glu21-Gln541.
Purity:	> 95 % as determined by Tris-Bis PAGE, > 95 % as determined by HPLC
Sterility:	0.22 µm filtered
Endotoxin Level:	Less than 1EU per µg by the LAL method.

Target Details

Target:	EPH Receptor A3 (EPHA3)
Alternative Name:	EPHA3 (EPHA3 Products)

Target Details

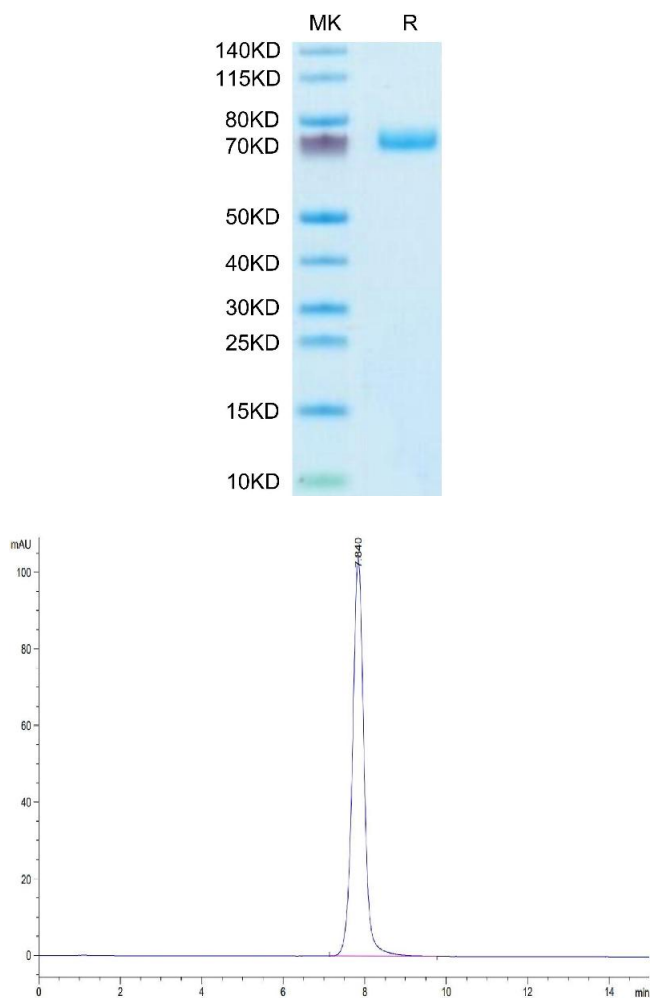
Background:	Erythropoietin-producing hepatocellular carcinoma cell surface type-A receptor 3 (EPHA3) has been found to promote the proliferation and survival of prostate cancer (PCa) cell lines and prostate tumor development in nude mice. The interaction of AR and SP1 contributes to regulate EPHA3 expression, and the SP1 binding sites (-295~-261) in the EPHA3 core promoter region is crucial to the regulation of EPHA3 expression in response to androgen hormone stimuli.
Molecular Weight:	59.9 kDa. Due to glycosylation, the protein migrates to 70-75 kDa based on Tris-Bis PAGE result.
Pathways:	RTK Signaling , Regulation of Cell Size

Application Details

Restrictions:	For Research Use only
---------------	-----------------------

Handling

Format:	Lyophilized
Reconstitution:	Centrifuge the tube before opening. Reconstituting to a concentration more than 100 µg/mL is recommended. Dissolve the lyophilized protein in distilled water.
Buffer:	Lyophilized from 0.22µm filtered solution in PBS (pH 7.4). Normally 8 % trehalose is added as protectant before lyophilization.
Storage:	-20 °C,-80 °C
Storage Comment:	-20 to -80°C for 12 months as supplied from date of receipt.,-80°C for 3-6 months after reconstitution.,2-8°C for 2-7 days after reconstitution.,Recommend to aliquot the protein into smaller quantities for optimal storage. Please minimize freeze-thaw cycles.
Expiry Date:	12 months



SDS-PAGE

Image 1. Human EPHA3 on Tris-Bis PAGE under reduced condition. The purity is greater than 95 % .

Size-exclusion chromatography-High Pressure Liquid Chromatography

Image 2. The purity of Human EPHA3 is greater than 95 % as determined by SEC-HPLC.