

Datasheet for ABIN7274558

**EPH Receptor A5 Protein (EPHA5) (AA 26-573) (His tag)**[Go to Product page](#)**2** Images

## Overview

Quantity:	100 µg
Target:	EPH Receptor A5 (EPHA5)
Protein Characteristics:	AA 26-573
Origin:	Human
Source:	HEK-293 Cells
Protein Type:	Recombinant
Purification tag / Conjugate:	This EPH Receptor A5 protein is labelled with His tag.

## Product Details

Purpose:	Human EPHA5 Protein
Sequence:	Ala26-Pro573
Characteristics:	Recombinant Human EPHA5 Protein is expressed from HEK293 with His tag at the C-Terminus. It contains Ala26-Pro573.
Purity:	> 95 % as determined by Tris-Bis PAGE, > 95 % as determined by HPLC
Sterility:	0.22 µm filtered
Endotoxin Level:	Less than 1EU per µg by the LAL method.

## Target Details

Target:	EPH Receptor A5 (EPHA5)
Alternative Name:	EPHA5 ( <a href="#">EPHA5 Products</a> )

## Target Details

Background:	Ephrin type-A receptor 5 (EphA5) expression was detected in all non-tumor gastric epithelia but was differentially expressed among gastric cancer samples. EphA5 is differentially expressed in gastric cancer. EphA5 may therefore be a potential therapeutic target and may have clinical utility as a marker for lymph node metastasis in gastric cancer.
Molecular Weight:	61.9 kDa. Due to glycosylation, the protein migrates to 68-80 kDa based on Tris-Bis PAGE result.
Pathways:	<a href="#">RTK Signaling</a>

## Application Details

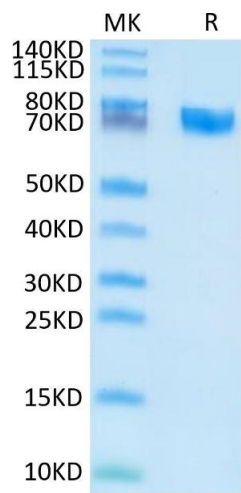
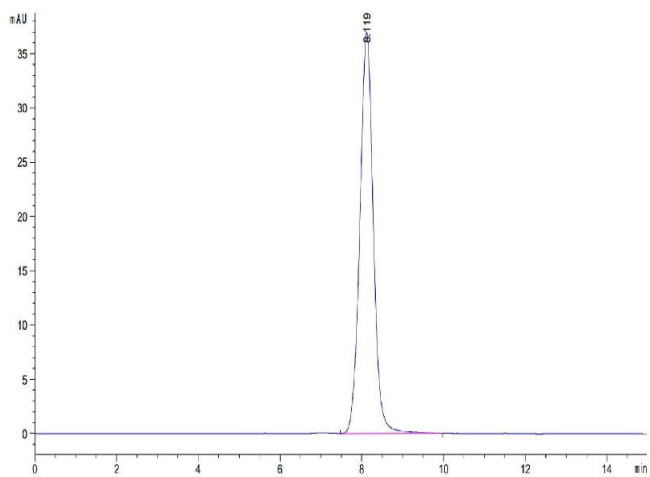
Restrictions:	For Research Use only
---------------	-----------------------

## Handling

Format:	Lyophilized
Reconstitution:	Centrifuge the tube before opening. Reconstituting to a concentration more than 100 µg/mL is recommended. Dissolve the lyophilized protein in distilled water.
Buffer:	Lyophilized from 0.22µm filtered solution in PBS ( pH 7.4). Normally 8 % trehalose is added as protectant before lyophilization.
Storage:	-20 °C,-80 °C
Storage Comment:	-20 to -80°C for 12 months as supplied from date of receipt.,-80°C for 3-6 months after reconstitution.,2-8°C for 2-7 days after reconstitution.,Recommend to aliquot the protein into smaller quantities for optimal storage. Please minimize freeze-thaw cycles.
Expiry Date:	12 months

Size-exclusion chromatography-High Pressure Liquid Chromatography

**Image 1.** The purity of Human EPHA5 is greater than 95 % as determined by SEC-HPLC.



SDS-PAGE

**Image 2.** Human EPHA5 on Tris-Bis PAGE under reduced condition. The purity is greater than 95 % .