



[Go to Product page](#)

Datasheet for ABIN7274567

## CD147 Protein (AA 22-205) (His tag)

### 3 Images

#### Overview

Quantity:	100 µg
Target:	CD147 (BSG)
Protein Characteristics:	AA 22-205
Origin:	Human
Source:	HEK-293 Cells
Protein Type:	Recombinant
Purification tag / Conjugate:	This CD147 protein is labelled with His tag.

#### Product Details

Purpose:	Human EMMPRIN/CD147 Protein
Sequence:	Ala22-His205
Characteristics:	Recombinant Human EMMPRIN/CD147 Protein is expressed from HEK293 with His tag at the C-Terminus.It contains Ala22-His205.
Purity:	> 95 % as determined by Tris-Bis PAGE,> 95 % as determined by HPLC
Sterility:	0.22 µm filtered
Endotoxin Level:	Less than 1EU per µg by the LAL method.
Biological Activity Comment:	Immobilized Human EMMPRIN, His Tag at 0.5µg/ml (100µl/well) on the plate. Dose response curve for Anti-EMMPRIN Antibody, hFc Tag with the EC50 of 9.8ng/ml determined by ELISA. See testing image for detail.

## Target Details

---

Target:	CD147 (BSG)
Alternative Name:	EMMPRIN ( <a href="#">BSG Products</a> )
Background:	CD147, also known as extracellular matrix metalloproteinase inducer (EMMPRIN) or basigin, is expressed in a variety of cell types. It is involved in the regulation of extracellular matrix (ECM) remodeling during physiological and pathological processes including wound healing, inflammatory diseases, and cancer. CD147 is a diagnostic and therapeutic target in cancer and inflammatory diseases, either directly or indirectly, by targeting CD147 partners.
Molecular Weight:	21.2 kDa. Due to glycosylation, the protein migrates to 28-40 kDa based on Tris-Bis PAGE result.
NCBI Accession:	<a href="#">NP_940991</a>
Pathways:	<a href="#">S100 Proteins</a>

## Application Details

---

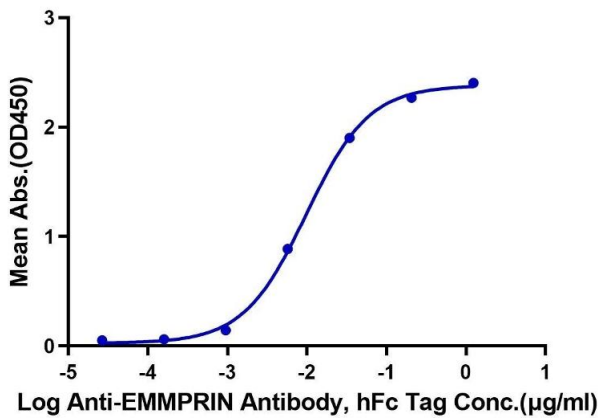
Restrictions:	For Research Use only
---------------	-----------------------

## Handling

---

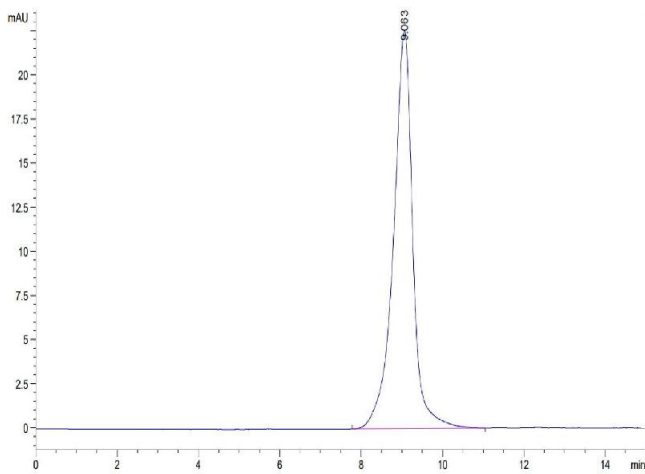
Format:	Lyophilized
Reconstitution:	Centrifuge the tube before opening. Reconstituting to a concentration more than 100 µg/mL is recommended. Dissolve the lyophilized protein in distilled water.
Buffer:	Lyophilized from 0.22µm filtered solution in PBS ( pH 7.4). Normally 8 % trehalose is added as protectant before lyophilization.
Storage:	-20 °C,-80 °C
Storage Comment:	-20 to -80°C for 12 months as supplied from date of receipt., -80°C for 3-6 months after reconstitution., 2-8°C for 2-7 days after reconstitution., Recommend to aliquot the protein into smaller quantities for optimal storage. Please minimize freeze-thaw cycles.
Expiry Date:	12 months

**Human EMMPRIN, His Tag ELISA**  
0.05µg Human EMMPRIN, His Tag Per Well



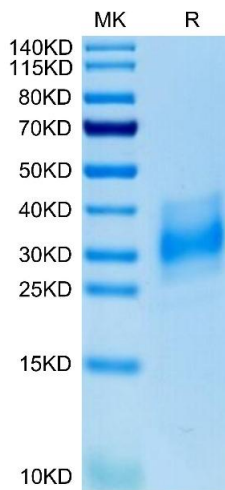
**ELISA**

**Image 1.** Immobilized Human EMMPRIN, His Tag at 0.5 µg/mL (100 µL/well) on the plate. Dose response curve for Anti-EMMPRIN Antibody, hFc Tag with the EC50 of 9.8 ng/mL determined by ELISA.



**Size-exclusion chromatography-High Pressure Liquid Chromatography**

**Image 2.** The purity of Human EMMPRIN/CD147 is greater than 95 % as determined by SEC-HPLC.



**SDS-PAGE**

**Image 3.** Human EMMPRIN/CD147 on Tris-Bis PAGE under reduced condition. The purity is greater than 95 % .