

Datasheet for ABIN7274570

Selectin E/CD62e Protein (AA 22-554) (His tag)**3** Images[Go to Product page](#)

Overview

Quantity:	100 µg
Target:	Selectin E/CD62e (SELE)
Protein Characteristics:	AA 22-554
Origin:	Cynomolgus
Source:	HEK-293 Cells
Protein Type:	Recombinant
Purification tag / Conjugate:	This Selectin E/CD62e protein is labelled with His tag.

Product Details

Purpose:	Cynomolgus E-selectin/CD62E Protein
Sequence:	Trp22-Pro554
Characteristics:	Recombinant Cynomolgus E-selectin/CD62E Protein is expressed from HEK293 with His tag at the C-Terminus. It contains Trp22-Pro554.
Purity:	> 95 % as determined by Tris-Bis PAGE, > 95 % as determined by HPLC
Sterility:	0.22 µm filtered
Endotoxin Level:	Less than 1EU per µg by the LAL method.
Biological Activity Comment:	Immobilized Cynomolgus E-selectin, His Tag at 0.5µg/ml (100µl/well) on the plate. Dose response curve for Anti-E-Selectin Antibody, hFc Tag with the EC50 of 14.1ng/ml determined by ELISA. See testing image for detail.

Target Details

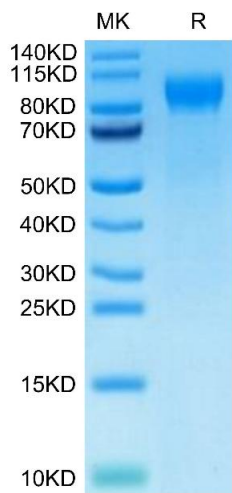
Target:	Selectin E/CD62e (SELE)
Alternative Name:	E-Selectin (SELE Products)
Background:	E-Selectin (Endothelial Leukocyte Adhesion Molecule-1, ELAM-1, CD62E), a member of the Selectin family, is a 107 - 115 kDa cell surface glycoprotein. It is transiently expressed on vascular endothelial cells in response to IL-1 beta and TNF-alpha. E-selectin mediates in the adhesion of blood neutrophils in cytokine-activated endothelium through interaction with SELPLG/PSGL1. May have a role in capillary morphogenesis.
Molecular Weight:	59.47 kDa. Due to glycosylation, the protein migrates to 80-110 kDa based on Tris-Bis PAGE result.
UniProt:	A0A2K5U7H9
Pathways:	Thromboxane A2 Receptor Signaling

Application Details

Restrictions:	For Research Use only
---------------	-----------------------

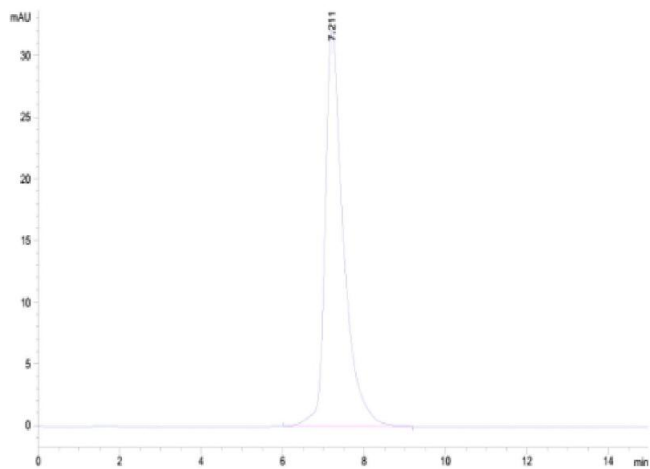
Handling

Format:	Lyophilized
Reconstitution:	Centrifuge the tube before opening. Reconstituting to a concentration more than 100 µg/mL is recommended. Dissolve the lyophilized protein in distilled water.
Buffer:	Lyophilized from 0.22µm filtered solution in PBS (pH 7.4). Normally 8 % trehalose is added as protectant before lyophilization.
Storage:	-20 °C,-80 °C
Storage Comment:	-20 to -80°C for 12 months as supplied from date of receipt.,-80°C for 3-6 months after reconstitution.,2-8°C for 2-7 days after reconstitution.,Recommend to aliquot the protein into smaller quantities for optimal storage. Please minimize freeze-thaw cycles.
Expiry Date:	12 months



SDS-PAGE

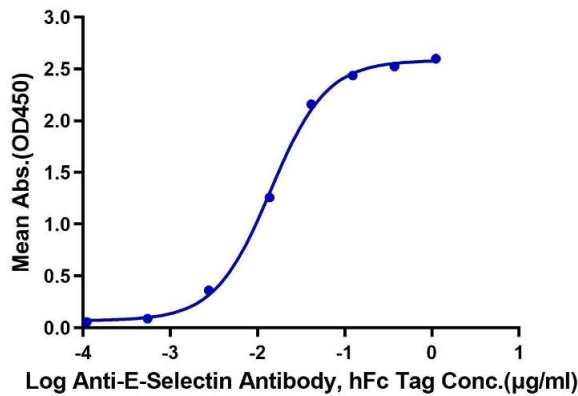
Image 1. Cynomolgus E-selectin on Tris-Bis PAGE under reduced condition. The purity is greater than 95 % .



Size-exclusion chromatography-High Pressure Liquid Chromatography

Image 2. The purity of Cynomolgus E-selectin is greater than 95 % as determined by SEC-HPLC.

Cynomolgus E-selectin, His Tag ELISA
0.05µg Cynomolgus E-selectin, His Tag Per Well



ELISA

Image 3. Immobilized Cynomolgus E-selectin, His Tag at 0.5 µg/mL (100 µL/well) on the plate. Dose response curve for Anti-E-Selectin Antibody, hFc Tag with the EC50 of 14.1 ng/mL determined by ELISA.