

Datasheet for ABIN7274571

**Selectin E/CD62e Protein (AA 22-556) (Fc Tag)****3** Images[Go to Product page](#)

## Overview

Quantity:	100 µg
Target:	Selectin E/CD62e (SELE)
Protein Characteristics:	AA 22-556
Origin:	Human
Source:	HEK-293 Cells
Protein Type:	Recombinant
Purification tag / Conjugate:	This Selectin E/CD62e protein is labelled with Fc Tag.

## Product Details

Purpose:	Human E-Selectin/CD62E Protein
Sequence:	Trp22-Pro556
Characteristics:	Recombinant Human E-Selectin/CD62E Protein is expressed from HEK293 with hFc tag at the C-Terminus.It contains Trp22-Pro556.
Purity:	> 95 % as determined by Tris-Bis PAGE,> 95 % as determined by HPLC
Sterility:	0.22 µm filtered
Endotoxin Level:	Less than 1EU per µg by the LAL method.
Biological Activity Comment:	Immobilized Human E-Selectin, hFc Tag at 0.5µg/ml (100µl/Well) on the plate. Dose response curve for Biotinylated Anti-E-Selectin Antibody, hFc Tag with the EC50 21.4ng/ml determined by ELISA. See testing image for detail.

## Target Details

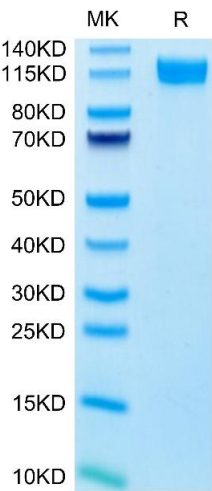
Target:	Selectin E/CD62e (SELE)
Alternative Name:	E-Selectin ( <a href="#">SELE Products</a> )
Background:	E-Selectin (Endothelial Leukocyte Adhesion Molecule-1, ELAM-1, CD62E), a member of the Selectin family, is a 107 - 115 kDa cell surface glycoprotein. It is transiently expressed on vascular endothelial cells in response to IL-1 beta and TNF-alpha. E-selectin mediates in the adhesion of blood neutrophils in cytokine-activated endothelium through interaction with SELPLG/PSGL1. May have a role in capillary morphogenesis.
Molecular Weight:	85.4 kDa. Due to glycosylation, the protein migrates to 90-130 kDa based on Tris-Bis PAGE result.
UniProt:	<a href="#">P16581</a>
Pathways:	<a href="#">Thromboxane A2 Receptor Signaling</a>

## Application Details

Restrictions:	For Research Use only
---------------	-----------------------

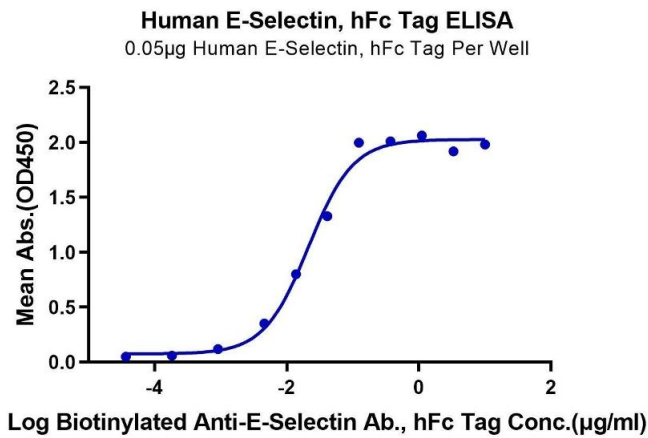
## Handling

Format:	Lyophilized
Reconstitution:	Centrifuge the tube before opening. Reconstituting to a concentration more than 100 µg/mL is recommended. Dissolve the lyophilized protein in distilled water.
Buffer:	Lyophilized from 0.22µm filtered solution in PBS ( pH 7.4). Normally 8 % trehalose is added as protectant before lyophilization.
Storage:	-20 °C,-80 °C
Storage Comment:	-20 to -80°C for 12 months as supplied from date of receipt.,-80°C for 3-6 months after reconstitution.,2-8°C for 2-7 days after reconstitution.,Recommend to aliquot the protein into smaller quantities for optimal storage. Please minimize freeze-thaw cycles.
Expiry Date:	12 months



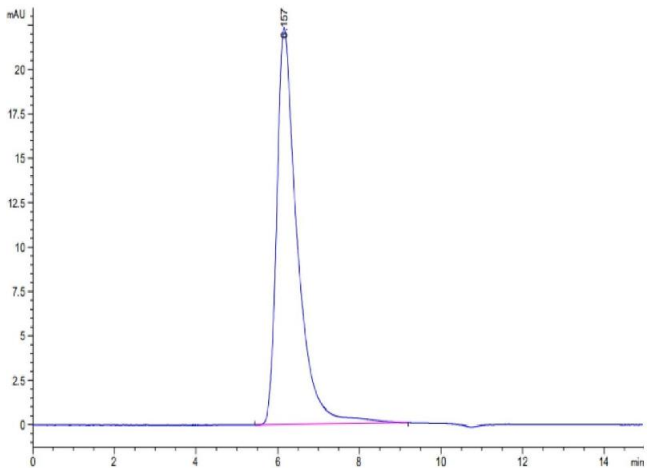
SDS-PAGE

**Image 1.** Human E-selectin on Tris-Bis PAGE under reduced conditions. The purity is greater than 95 % .



ELISA

**Image 2.** Immobilized Human E-Selectin, hFc Tag at 0.5 µg/mL (100 µL/Well) on the plate. Dose response curve for Biotinylated Anti-E-Selectin Antibody, hFc Tag with the EC50 21.4 ng/mL determined by ELISA.



Size-exclusion chromatography-High Pressure Liquid Chromatography

**Image 3.** The purity of Human E-selectin is greater than 95 % as determined by SEC-HPLC.