

Datasheet for ABIN7274573

Selectin E/CD62e Protein (His-Avi Tag,Biotin)[Go to Product page](#)**3** Images

Overview

Quantity:	100 µg
Target:	Selectin E/CD62e (SELE)
Origin:	Human
Source:	HEK-293 Cells
Protein Type:	Recombinant
Purification tag / Conjugate:	This Selectin E/CD62e protein is labelled with His-Avi Tag,Biotin.

Product Details

Sequence:	Trp22-Pro556
Purity:	> 95% as determined by Tris-Bis PAGE,> 95% as determined by HPLC
Sterility:	0.22 µm filtered
Endotoxin Level:	Less than 1EU per µg by the LAL method.
Biological Activity Comment:	Immobilized Biotinylated Human E-Selectin at 0.5µg/ml (100µl/Well) on the plate. Dose response curve for Anti-E-Selectin Antibody, hFc Tag with the EC50 of 7.8ng/ml determined by ELISA. See testing image for detail.

Target Details

Target:	Selectin E/CD62e (SELE)
Alternative Name:	E-Selectin (SELE Products)
Background:	CD62E, ELAM, ELAM1, ESEL, E-Selectin, LECAM2, SELE, selectin E, RP1-117P20.2,E-Selectin (Endothelial Leukocyte Adhesion Molecule-1, ELAM-1, CD62E), a member of the Selectin family,

Target Details

is a 107 - 115 kDa cell surface glycoprotein. It is transiently expressed on vascular endothelial cells in response to IL-1 beta and TNF-alpha. E-selectin mediates in the adhesion of blood neutrophils in cytokine-activated endothelium through interaction with SELPLG/PSGL1. May have a role in capillary morphogenesis.

Molecular Weight: 61.6 kDa. Due to glycosylation, the protein migrates to 80-100 kDa based on Tris-Bis PAGE result.

UniProt: [P16581](#)

Pathways: [Thromboxane A2 Receptor Signaling](#)

Application Details

Restrictions: For Research Use only

Handling

Format: Lyophilized

Reconstitution: Centrifuge tubes before opening. Reconstituting to a concentration more than 100 µg/mL is recommended (usually we use 1 mg/mL solution for lyophilization). Dissolve the lyophilized protein in distilled water.

Buffer: Lyophilized from 0.22µm filtered solution in PBS (pH 7.4). Normally 5 % trehalose is added as protectant before lyophilization.

Storage: 4 °C, -80 °C

Storage Comment: Reconstituted protein stable at -80°C for 12 months, 4°C for 1 week. Use a manual defrost freezer and avoid repeated freeze-thaw cycles.

Expiry Date: 12 months

Size-exclusion chromatography-High Pressure Liquid Chromatography

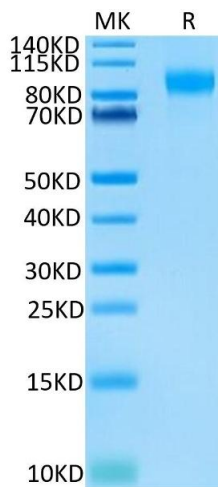
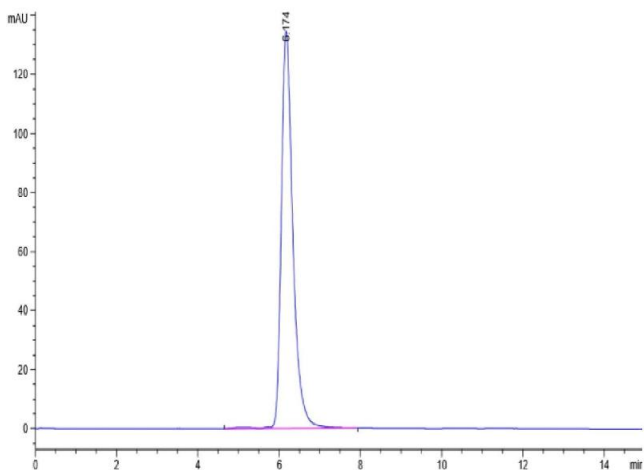
Image 1. The purity of Biotinylated Human E-selectin is greater than 95 % as determined by SEC-HPLC.

SDS-PAGE

Image 2. Biotinylated Human E-selectin on Tris-Bis PAGE under reduced condition. The purity is greater than 95 % .

ELISA

Image 3. Immobilized Biotinylated Human E-Selectin at 0.5 µg/mL (100 µL/Well) on the plate. Dose response curve for Anti-E-Selectin Antibody, hFc Tag with the EC50 of 7.8 ng/mL determined by ELISA.



Biotinylated Human E-Selectin, His Tag ELISA
0.05µg Biotinylated Human E-Selectin, His Tag Per Well

