

Datasheet for ABIN7274591

FCRL2 Protein (AA 20-401) (His tag)**3** Images[Go to Product page](#)

Overview

Quantity:	100 µg
Target:	FCRL2
Protein Characteristics:	AA 20-401
Origin:	Human
Source:	HEK-293 Cells
Protein Type:	Recombinant
Purification tag / Conjugate:	This FCRL2 protein is labelled with His tag.

Product Details

Purpose:	Human FCRL2/IRTA4 Protein
Sequence:	Leu20-Val401
Characteristics:	Recombinant Human FCRL2/IRTA4 Protein is expressed from HEK293 with His tag at the C-Terminus. It contains Leu20-Val401.
Purity:	> 95 % as determined by Tris-Bis PAGE, > 95 % as determined by HPLC
Sterility:	0.22 µm filtered
Endotoxin Level:	Less than 1EU per µg by the LAL method.
Biological Activity Comment:	Immobilized Human FCRL2, His Tag at 1µg/ml (100µl/well) on the plate. Dose response curve for Anti-FCRL2 Antibody, hFc Tag with the EC50 of 0.17µg/ml determined by ELISA. See testing image for detail.

Target Details

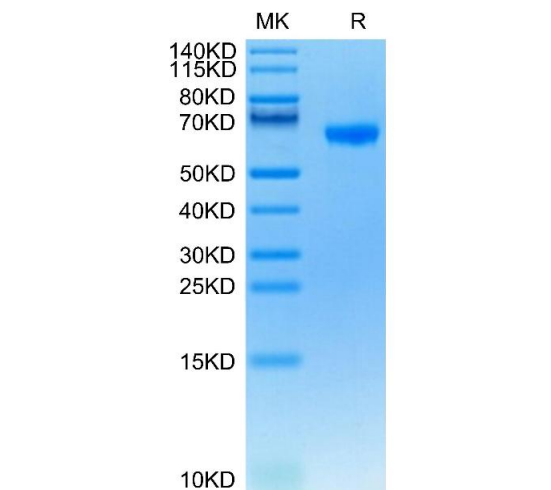
Target:	FCRL2
Alternative Name:	FCRL2 (FCRL2 Products)
Background:	Fc receptor-like 2 (FCRL2) is highly expressed on B-cell chronic lymphocytic leukemia (B-CLL) cells and could possibly influence disease pathogenesis. FCRL2 mRNA expression was found to be expressed at considerably higher levels in peripheral blood mononuclear cells (PBMC) of B-CLL patients compared to controls (range 1.35- to 210-fold upregulation, $P < 0.0001$) and cells of other hematological diseases.
Molecular Weight:	42.7 kDa. Due to glycosylation, the protein migrates to 60-70 kDa based on Tris-Bis PAGE result.

Application Details

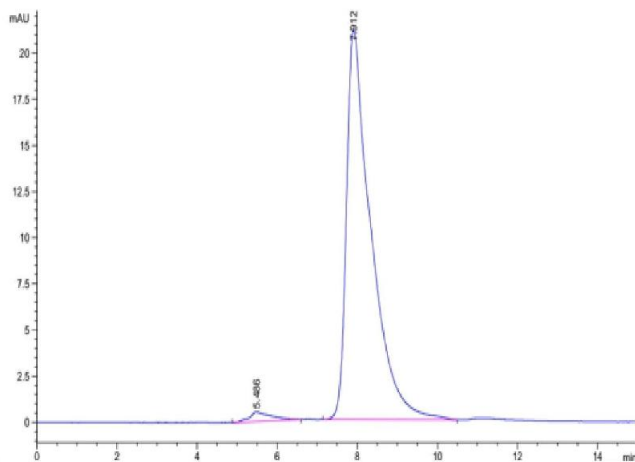
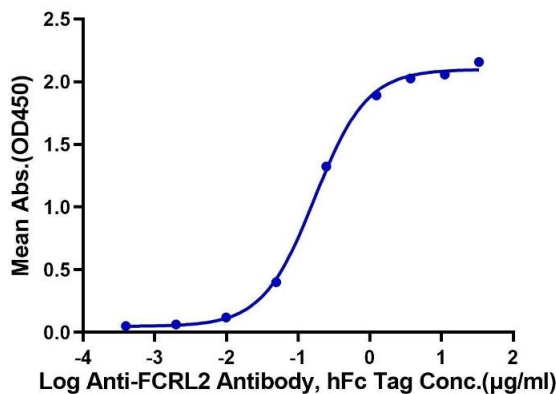
Restrictions:	For Research Use only
---------------	-----------------------

Handling

Format:	Lyophilized
Reconstitution:	Centrifuge the tube before opening. Reconstituting to a concentration more than 100 µg/mL is recommended. Dissolve the lyophilized protein in distilled water.
Buffer:	Lyophilized from 0.22µm filtered solution in PBS (pH 7.4). Normally 8 % trehalose is added as protectant before lyophilization.
Storage:	-20 °C,-80 °C
Storage Comment:	-20 to -80°C for 12 months as supplied from date of receipt.,-80°C for 3-6 months after reconstitution.,2-8°C for 2-7 days after reconstitution.,Recommend to aliquot the protein into smaller quantities for optimal storage. Please minimize freeze-thaw cycles.
Expiry Date:	12 months



Human FCRL2, His Tag ELISA
0.1µg Human FCRL2, His Tag Per Well



SDS-PAGE

Image 1. Human FCRL2 on Tris-Bis PAGE under reduced condition. The purity is greater than 95 % .

ELISA

Image 2. Immobilized Human FCRL2, His Tag at 1 µg/mL (100 µL/well) on the plate. Dose response curve for Anti-FCRL2 Antibody, hFc Tag with the EC50 of 0.17 µg/mL determined by ELISA.

Size-exclusion chromatography-High Pressure Liquid Chromatography

Image 3. The purity of Human FCRL2 is greater than 95 % as determined by SEC-HPLC.