

Datasheet for ABIN7274608

Fc epsilon RI/FCER1A Protein (AA 26-205) (Fc Tag)[Go to Product page](#)**4** Images

Overview

Quantity:	100 µg
Target:	Fc epsilon RI/FCER1A (FCER1A)
Protein Characteristics:	AA 26-205
Origin:	Human
Source:	HEK-293 Cells
Protein Type:	Recombinant
Purification tag / Conjugate:	This Fc epsilon RI/FCER1A protein is labelled with Fc Tag.

Product Details

Purpose:	Human Fc epsilon RI alpha/FCER1a Protein
Sequence:	Val26-Gln205
Characteristics:	Recombinant Human Fc epsilon RI alpha/FCER1a Protein is expressed from HEK293 with hFc tag at the C-Terminus.It contains Val26-Gln205.
Purity:	> 95 % as determined by Tris-Bis PAGE,> 95 % as determined by HPLC
Sterility:	0.22 µm filtered
Endotoxin Level:	Less than 1EU per µg by the LAL method.
Biological Activity Comment:	Immobilized Human Fc epsilon RI alpha, hFc Tag at 0.5µg/ml (100µl/Well) on the plate. Dose response curve for Biotinylated Anti-Fc epsilon RI alpha Antibody, hFc Tag with the EC50 10ng/ml determined by ELISA. See testing image for detail.

Target Details

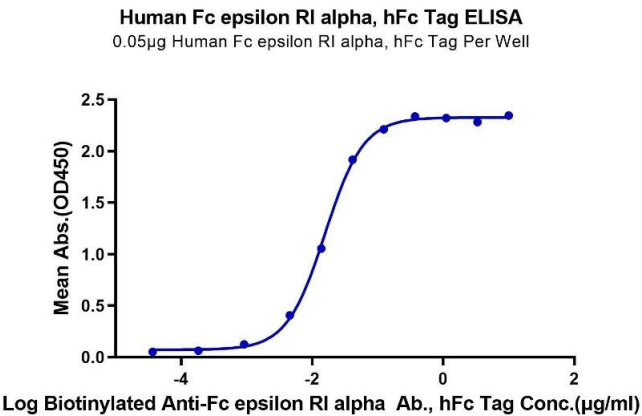
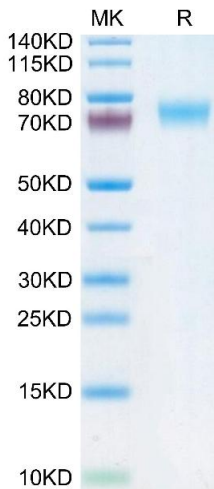
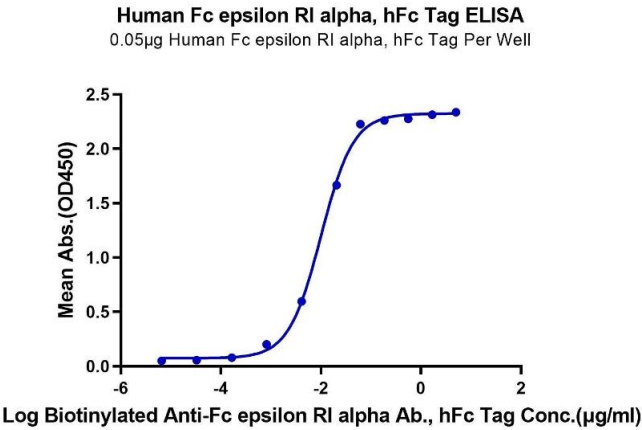
Target:	Fc epsilon RI/FCER1A (FCER1A)
Alternative Name:	Fc epsilon RI alpha (FCER1A Products)
Background:	Known susceptibility genes to atopy and asthma have been identified by linkage or associations with clinical phenotypes, including total serum IgE levels. IgE-mediated sensitivity reactions require a high-affinity IgE receptor (FcepsilonRI), which immobilizes the immunoglobulin on the surface of the effector cells, mostly mast cells and basophils. Similarly to the previously investigated beta subunit of the receptor, FCER1A is a good candidate for a quantitative trait locus (QTL) in allergic diseases, and appears to participate in the systemic regulation of IgE levels.
Molecular Weight:	47.8 kDa. Due to glycosylation, the protein migrates to 70-78 kDa based on Tris-Bis PAGE result.
Pathways:	Fc-epsilon Receptor Signaling Pathway , Regulation of Leukocyte Mediated Immunity , Positive Regulation of Immune Effector Process

Application Details

Restrictions:	For Research Use only
---------------	-----------------------

Handling

Format:	Lyophilized
Reconstitution:	Centrifuge the tube before opening. Reconstituting to a concentration more than 100 µg/mL is recommended. Dissolve the lyophilized protein in distilled water.
Buffer:	Lyophilized from 0.22µm filtered solution in PBS (pH 7.4). Normally 8 % trehalose is added as protectant before lyophilization.
Storage:	-20 °C,-80 °C
Storage Comment:	-20 to -80°C for 12 months as supplied from date of receipt.,-80°C for 3-6 months after reconstitution.,2-8°C for 2-7 days after reconstitution.,Recommend to aliquot the protein into smaller quantities for optimal storage. Please minimize freeze-thaw cycles.
Expiry Date:	12 months



ELISA

Image 1. Immobilized Human Fc epsilon RI alpha, hFc Tag at 0.5 µg/mL (100 µL/Well) on the plate. Dose response curve for Biotinylated Anti-Fc epsilon RI alpha Antibody, hFc Tag with the EC50 10 ng/mL determined by ELISA.

SDS-PAGE

Image 2. Human Fc epsilon RI alpha on Tris-Bis PAGE under reduced condition. The purity is greater than 95 % .

ELISA

Image 3. Immobilized Human Fc epsilon RI alpha, hFc Tag at 0.5 µg/mL (100 µL/Well) on the plate. Dose response curve for Biotinylated Anti-Fc epsilon RI alpha Antibody, hFc Tag with the EC50 15.8 ng/mL determined by ELISA.

Please check the [product details page](#) for more images. Overall 4 images are available for ABIN7274608.