

Datasheet for ABIN7274635
FGF21 Protein (mFc-Avi Tag)

5 Images

[Go to Product page](#)

Overview

Quantity:	100 µg
Target:	FGF21
Origin:	Human
Source:	HEK-293 Cells
Protein Type:	Recombinant
Purification tag / Conjugate:	This FGF21 protein is labelled with mFc-Avi Tag.

Product Details

Sequence:	His29-Ser209
Purity:	> 95% as determined by Tris-Bis PAGE,> 95% as determined by HPLC
Sterility:	0.22 µm filtered
Endotoxin Level:	Less than 1EU per µg by the LAL method.
Biological Activity Comment:	Immobilized Human FGF21 at 2µg/ml (100µl/Well) on the plate. Dose response curve for Human Beta Klotho, His Tag with the EC50 of 1.48µg/ml determined by ELISA. The affinity constant of 0.54nM as determined in SPR assay (Biacore T200). See testing image for detail.

Target Details

Target:	FGF21
Alternative Name:	FGF21 (FGF21 Products)
Background:	UNQ3115, PRO10196, FGF-21, FGF21,Fibroblast growth factor 21 (FGF21) is a peptide hormone that is synthesized by several organs and regulates energy homeostasis. Excitement

Target Details

	surrounding this relatively recently identified hormone is based on the documented metabolic beneficial effects of FGF21, which include weight loss and improved glycemia.
Molecular Weight:	46.9 kDa. Due to glycosylation, the protein migrates to 52-60 kDa based on Tris-Bis PAGE result.
Pathways:	RTK Signaling

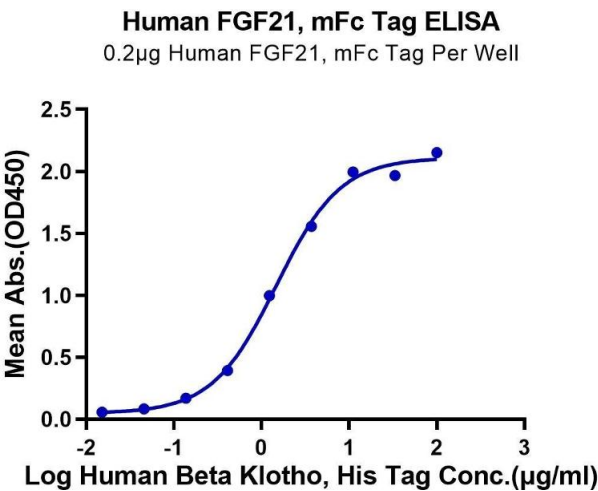
Application Details

Restrictions:	For Research Use only
---------------	-----------------------

Handling

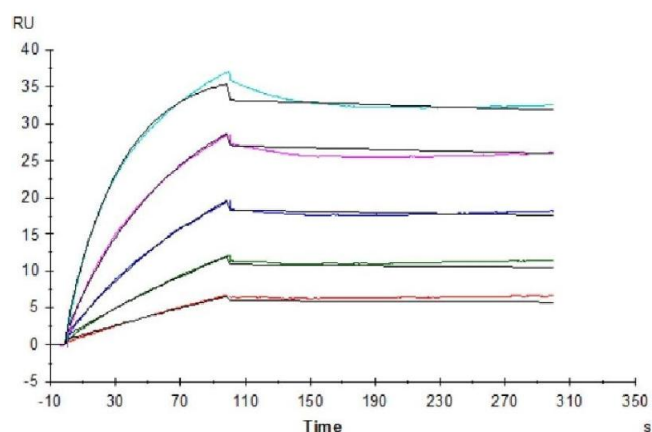
Format:	Lyophilized
Reconstitution:	Centrifuge tubes before opening. Reconstituting to a concentration more than 100 µg/mL is recommended (usually we use 1 mg/mL solution for lyophilization). Dissolve the lyophilized protein in distilled water.
Buffer:	Lyophilized from 0.22µm filtered solution in PBS (pH 7.4). Normally 5 % trehalose is added as protectant before lyophilization.
Storage:	4 °C,-80 °C
Storage Comment:	Reconstituted protein stable at -80°C for 12 months, 4°C for 1 week. Use a manual defrost freezer and avoid repeated freeze-thaw cycles.
Expiry Date:	12 months

Images



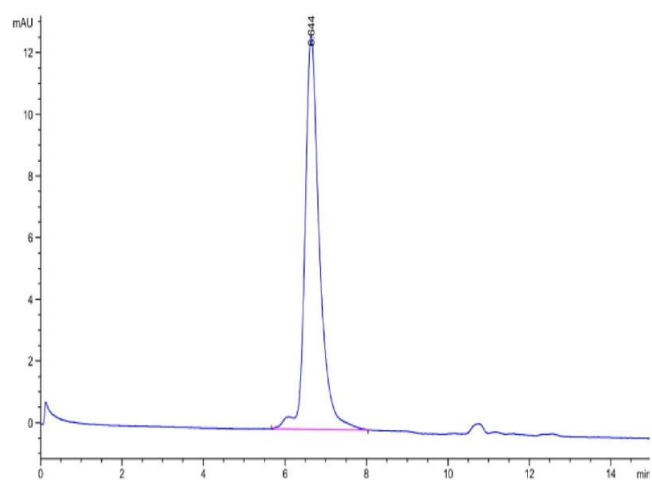
ELISA

Image 1. Immobilized Human FGF21 at 2 µg/mL (100 µL/Well) on the plate. Dose response curve for Human Beta Klotho, His Tag with the EC50 of 1.48 µg/mL determined by ELISA.



Surface Plasmon Resonance

Image 2. Human Klotho full length, His Tag captured on CM5 Chip via anti-His antibody can bind Human FGF21, mFc Tag with an affinity constant of 0.54nM as determined in SPR assay (Biacore T200).



Size-exclusion chromatography-High Pressure Liquid Chromatography

Image 3. The purity of Human FGF21 is greater than 95 % as determined by SEC-HPLC.

Please check the [product details page](#) for more images. Overall 5 images are available for ABIN7274635.