



[Go to Product page](#)

Datasheet for ABIN7274718

GDF15 Protein (AA 193-308) (His tag)

3 Images

Overview

Quantity:	100 µg
Target:	GDF15
Protein Characteristics:	AA 193-308
Origin:	Cynomolgus
Source:	Escherichia coli (E. coli)
Protein Type:	Recombinant
Purification tag / Conjugate:	This GDF15 protein is labelled with His tag.

Product Details

Purpose:	Cynomolgus GDF15 Protein
Sequence:	Arg193-Val308
Characteristics:	Recombinant Cynomolgus GDF15 Protein is expressed from E.coli with His tag at the N-Terminus.It contains Arg193-Val308.
Purity:	> 95 % as determined by Tris-Bis PAGE
Sterility:	0.22 µm filtered
Endotoxin Level:	Less than 1EU per µg by the LAL method.
Biological Activity Comment:	Immobilized Cynomolgus GDF15, His Tag at 5µg/ml (100µl/well) on the plate. Dose response curve for Biotinylated Cynomolgus GFRAL, His Tag with the EC50 of 56.5ng/ml determined by ELISA. See testing image for detail.

Target Details

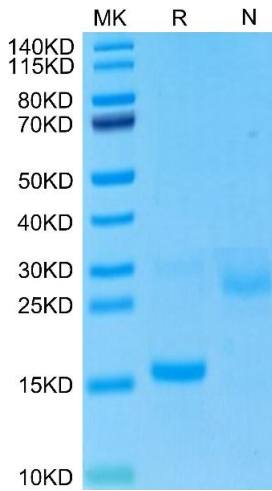
Target:	GDF15
Alternative Name:	GDF15 (GDF15 Products)
Background:	Growth and differentiation factor 15 (GDF15) is an inflammation-associated hormone with poorly defined biology. Here, we investigated the role of GDF15 in bacterial and viral infections. Inflammation induced GDF15, and that GDF15 was necessary for surviving both bacterial and viral infections, as well as sepsis. The protective effects of GDF15 were largely independent of pathogen control or the magnitude of inflammatory response, suggesting a role in disease tolerance.
Molecular Weight:	14.15 kDa. The protein migrates to 15-18 kDa based on Tris-Bis PAGE result.
UniProt:	G7PWZ3
Pathways:	SARS-CoV-2 Protein Interactome

Application Details

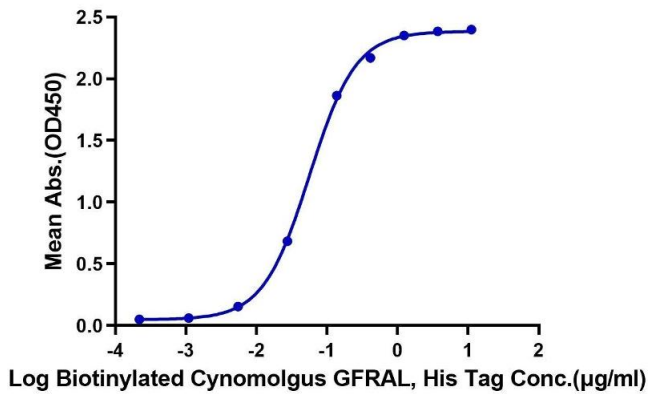
Restrictions:	For Research Use only
---------------	-----------------------

Handling

Format:	Lyophilized
Reconstitution:	Centrifuge the tube before opening. Reconstituting to a concentration more than 100 µg/mL is recommended. Dissolve the lyophilized protein in 50 mM HAc (pH 2.9).
Buffer:	Lyophilized from 0.22µm filtered solution in 50 mM HAc (pH 2.9). Normally 8 % trehalose is added as protectant before lyophilization.
Storage:	-20 °C,-80 °C
Storage Comment:	-20 to -80°C for 12 months as supplied from date of receipt.,-80°C for 3-6 months after reconstitution.,2-8°C for 2-7 days after reconstitution.,Recommend to aliquot the protein into smaller quantities for optimal storage. Please minimize freeze-thaw cycles.
Expiry Date:	12 months



Cynomolgus GDF15, His Tag ELISA
0.5µg Cynomolgus GDF15, His Tag Per Well



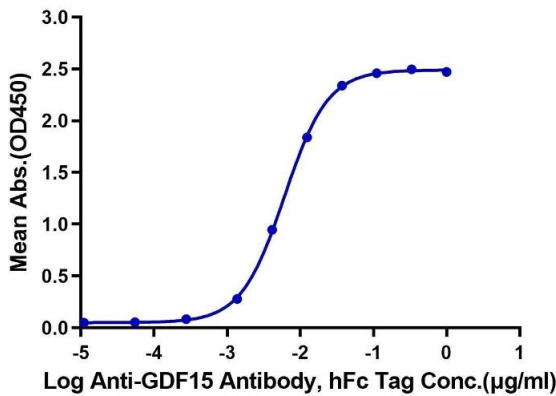
SDS-PAGE

Image 1. Cynomolgus GDF15 on Tris-Bis PAGE under reduced (R) condition and Non reducing (N) condition. The purity is greater than 95 % .

ELISA

Image 2. Immobilized Cynomolgus GDF15, His Tag at 5 µg/mL (100 µL/well) on the plate. Dose response curve for Biotinylated Cynomolgus GFRAL, His Tag with the EC50 of 56.5 ng/mL determined by ELISA.

Cynomolgus GDF15, His Tag ELISA
0.02µg Cynomolgus GDF15, His Tag Per Well



ELISA

Image 3. Immobilized Cynomolgus GDF15, His Tag at 0.2 µg/mL (100 µL/well) on the plate. Dose response curve for Anti-GDF15 Antibody, hFc Tag with the EC50 of 6.1 ng/mL determined by ELISA.