



[Go to Product page](#)

Datasheet for ABIN7274719

GDF15 Protein (AA 197-308) (Fc Tag)

4 Images

Overview

Quantity:	100 µg
Target:	GDF15
Protein Characteristics:	AA 197-308
Origin:	Cynomolgus
Source:	HEK-293 Cells
Protein Type:	Recombinant
Purification tag / Conjugate:	This GDF15 protein is labelled with Fc Tag.

Product Details

Purpose:	Cynomolgus GDF15 Protein
Sequence:	Ala197-Val308
Characteristics:	Recombinant Cynomolgus GDF15 Protein is expressed from HEK293 with hFc tag at the N-Terminus.It contains Ala197-Val308.
Purity:	> 95 % as determined by Tris-Bis PAGE,> 95 % as determined by HPLC
Sterility:	0.22 µm filtered
Endotoxin Level:	Less than 1EU per µg by the LAL method.
Biological Activity Comment:	Immobilized Cynomolgus GFRAL, His Tag at 1µg/ml (100µl/well) on the plate. Dose response curve for Cynomolgus GDF15, hFc Tag with the EC50 of 9.5ng/ml determined by ELISA. See testing image for detail.

Target Details

Target:	GDF15
Alternative Name:	GDF15 (GDF15 Products)
Background:	Growth and differentiation factor 15 (GDF15) is an inflammation-associated hormone with poorly defined biology. Here, we investigated the role of GDF15 in bacterial and viral infections. Inflammation induced GDF15, and that GDF15 was necessary for surviving both bacterial and viral infections, as well as sepsis. The protective effects of GDF15 were largely independent of pathogen control or the magnitude of inflammatory response, suggesting a role in disease tolerance.
Molecular Weight:	37.9 kDa. Due to glycosylation, the protein migrates to 40-50 kDa based on Tris-Bis PAGE result.
UniProt:	G7PWZ3
Pathways:	SARS-CoV-2 Protein Interactome

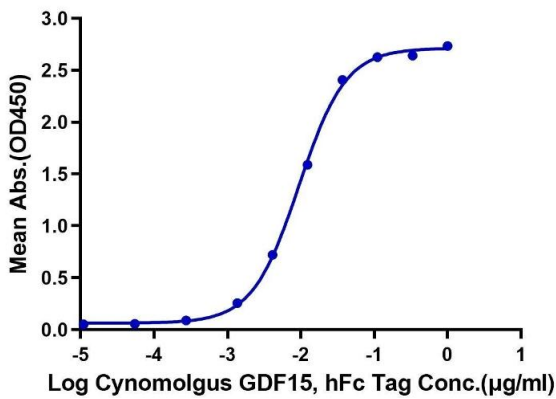
Application Details

Restrictions:	For Research Use only
---------------	-----------------------

Handling

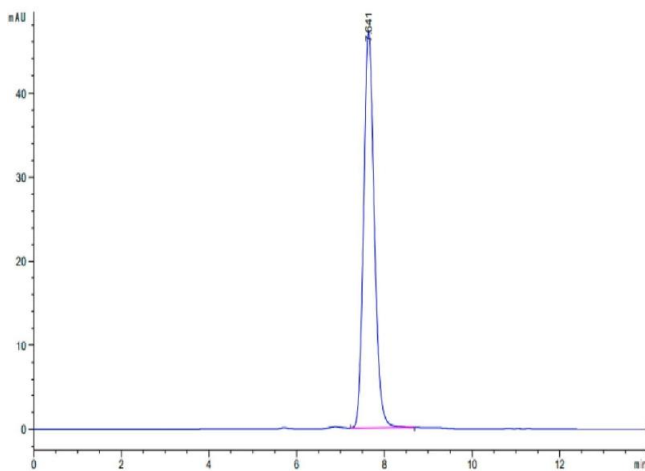
Format:	Lyophilized
Reconstitution:	Centrifuge the tube before opening. Reconstituting to a concentration more than 100 µg/mL is recommended. Dissolve the lyophilized protein in distilled water.
Buffer:	Lyophilized from 0.22µm filtered solution in PBS (pH 7.4). Normally 8 % trehalose is added as protectant before lyophilization.
Storage:	-20 °C,-80 °C
Storage Comment:	-20 to -80°C for 12 months as supplied from date of receipt., -80°C for 3-6 months after reconstitution., 2-8°C for 2-7 days after reconstitution., Recommend to aliquot the protein into smaller quantities for optimal storage. Please minimize freeze-thaw cycles.
Expiry Date:	12 months

Cynomolgus GDF15, hFc Tag ELISA
0.1 µg Cynomolgus GFRAL, His Tag Per Well



ELISA

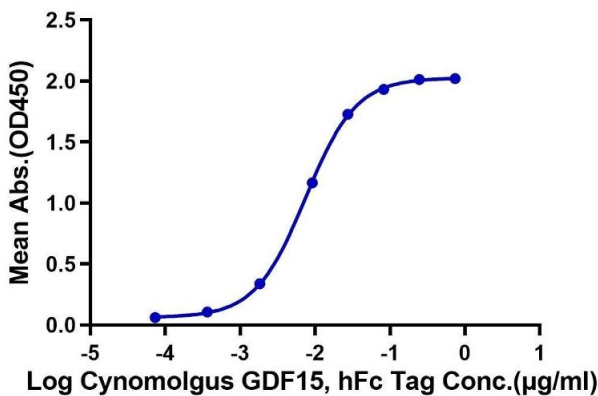
Image 1. Immobilized Cynomolgus GFRAL, His Tag at 1 µg/mL (100 µL/well) on the plate. Dose response curve for Cynomolgus GDF15, hFc Tag with the EC50 of 9.5 ng/mL determined by ELISA.



Size-exclusion chromatography-High Pressure Liquid Chromatography

Image 2. The purity of Cynomolgus GDF15 is greater than 95 % as determined by SEC-HPLC.

Cynomolgus GDF15, hFc Tag ELISA
0.1 µg Cynomolgus GFRAL, His Tag Per Well



ELISA

Image 3. Immobilized Cynomolgus GFRAL, His Tag at 1 µg/mL (100 µL/Well) on the plate. Dose response curve for Cynomolgus GDF15, hFc Tag with the EC50 of 7.5 ng/mL determined by ELISA.

Please check the [product details page](#) for more images. Overall 4 images are available for ABIN7274719.