



[Go to Product page](#)

Datasheet for ABIN7274721

GDF15 Protein (AA 197-307) (His tag)

3 Images

Overview

Quantity:	100 µg
Target:	GDF15
Protein Characteristics:	AA 197-307
Origin:	Dog
Source:	Escherichia coli (E. coli)
Protein Type:	Recombinant
Purification tag / Conjugate:	This GDF15 protein is labelled with His tag.

Product Details

Purpose:	Canine GDF15 Protein
Sequence:	Ala197-Val307
Characteristics:	Recombinant Canine GDF15 Protein is expressed from E.coli with His tag at the N-Terminus.It contains Ala197-Val307.
Purity:	> 95 % as determined by Tris-Bis PAGE
Sterility:	0.22 µm filtered
Endotoxin Level:	Less than 1EU per µg by the LAL method.
Biological Activity Comment:	Immobilized Canine GDF15, His Tag at 1µg/ml (100µl/Well) on the plate. Dose response curve for Human GFRAL, hFc Tag with the EC50 of 48.3ng/ml determined by ELISA. See testing image for detail.

Target Details

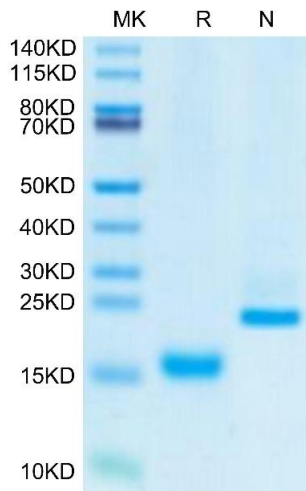
Target:	GDF15
Alternative Name:	GDF15 (GDF15 Products)
Background:	Growth Differentiation Factor 15 (GDF15), also known as NSAID activated gene-1 (NAG-1), is associated with a large number of biological processes and diseases, including cancer and obesity. GDF15 is synthesized as pro-GDF15, is dimerized, and is cleaved and secreted into the circulation as a mature dimer GDF15.
Molecular Weight:	13.12 kDa. The protein migrates to 15-20 kDa under reduced (R) condition and 23-26 kDa under Non reducing (N) condition based on Tris-Bis PAGE result.
UniProt:	A0A8C0TNP6
Pathways:	SARS-CoV-2 Protein Interactome

Application Details

Restrictions:	For Research Use only
---------------	-----------------------

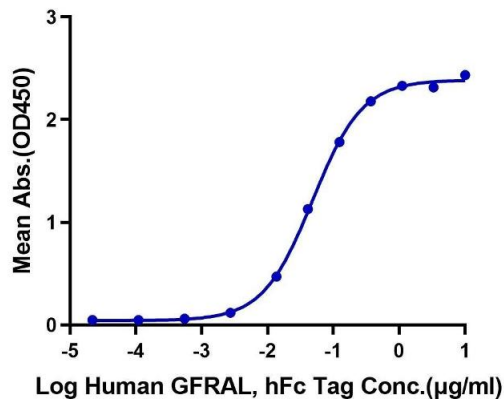
Handling

Format:	Lyophilized
Reconstitution:	Centrifuge the tube before opening. Reconstituting to a concentration more than 100 µg/mL is recommended. Dissolve the lyophilized protein in 50 mM HAc (pH 2.9).
Buffer:	Lyophilized from 0.22µm filtered solution in 50 mM HAc (pH 2.9). Normally 8 % trehalose is added as protectant before lyophilization.
Storage:	-20 °C,-80 °C
Storage Comment:	-20 to -80°C for 12 months as supplied from date of receipt.,-80°C for 3-6 months after reconstitution.,-2-8°C for 2-7 days after reconstitution.,Recommend to aliquot the protein into smaller quantities for optimal storage. Please minimize freeze-thaw cycles.
Expiry Date:	12 months



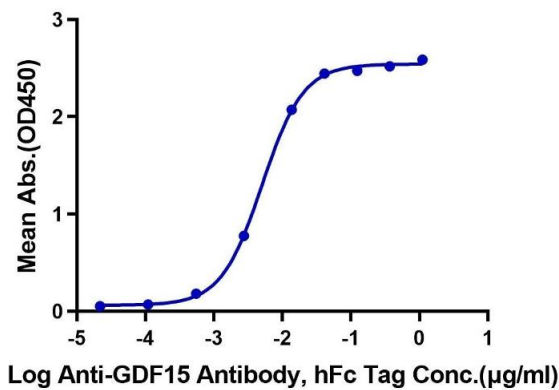
Canine GDF15, His Tag ELISA

0.1µg Canine GDF15, His Tag Per Well



Canine GDF15, His Tag ELISA

0.1µg Canine GDF15, His Tag Per Well



SDS-PAGE

Image 1. Canine GDF15 on Tris-Bis PAGE under reduced (R) condition and Non reducing (N) condition. The purity is greater than 95 % .

ELISA

Image 2. Immobilized Canine GDF15, His Tag at 1 µg/mL (100 µL/Well) on the plate. Dose response curve for Human GFRAL, hFc Tag with the EC50 of 48.3 ng/mL determined by ELISA.

ELISA

Image 3. Immobilized Canine GDF15, His Tag at 1 µg/mL (100 µL/Well) on the plate. Dose response curve for Anti-GDF15 Antibody, hFc Tag with the EC50 of 5.1 ng/mL determined by ELISA.