



[Go to Product page](#)

Datasheet for ABIN7274731

## GDF15 Protein (AA 189-303) (His tag)

### 2 Images

#### Overview

Quantity:	100 µg
Target:	GDF15
Protein Characteristics:	AA 189-303
Origin:	Rat
Source:	Escherichia coli (E. coli)
Protein Type:	Recombinant
Purification tag / Conjugate:	This GDF15 protein is labelled with His tag.

#### Product Details

Purpose:	Rat GDF15 Protein
Sequence:	Ser189-Ala303
Characteristics:	Recombinant Rat GDF15 Protein is expressed from E.coli with His tag at the N-Terminus.It contains Ser189-Ala303.
Purity:	> 95 % as determined by Tris-Bis PAGE
Sterility:	0.22 µm filtered
Endotoxin Level:	Less than 1EU per µg by the LAL method.
Biological Activity Comment:	Immobilized Rat GDF15, His Tag at 5µg/ml (100µl/Well) on the plate. Dose response curve for Biotinylated Mouse GFRAL, His Tag with the EC50 of 6.2µg/ml determined by ELISA. See testing image for detail.

## Target Details

---

Target:	GDF15
Alternative Name:	GDF15 ( <a href="#">GDF15 Products</a> )
Background:	Growth Differentiation Factor 15 (GDF15), also known as NSAID activated gene-1 (NAG-1), is associated with a large number of biological processes and diseases, including cancer and obesity. GDF15 is synthesized as pro-GDF15, is dimerized, and is cleaved and secreted into the circulation as a mature dimer GDF15.
Molecular Weight:	13.68 kDa. The protein migrates to 15-17 kDa based on Tris-Bis PAGE result.
UniProt:	<a href="#">Q9Z0J6</a>
Pathways:	<a href="#">SARS-CoV-2 Protein Interactome</a>

## Application Details

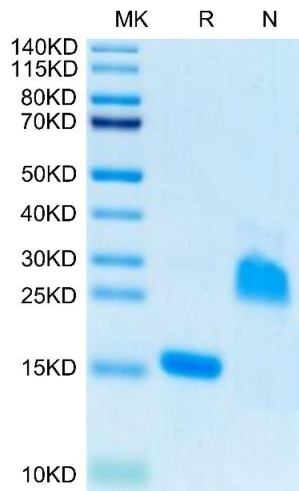
---

Restrictions:	For Research Use only
---------------	-----------------------

## Handling

---

Format:	Lyophilized
Reconstitution:	Centrifuge the tube before opening. Reconstituting to a concentration more than 100 µg/mL is recommended. Dissolve the lyophilized protein in 50 mM HAc ( pH 2.9).
Buffer:	Lyophilized from 0.22µm filtered solution in 50 mM HAc ( pH 2.9). Normally 8 % trehalose is added as protectant before lyophilization.
Storage:	-20 °C,-80 °C
Storage Comment:	-20 to -80°C for 12 months as supplied from date of receipt.,-80°C for 3-6 months after reconstitution.,2-8°C for 2-7 days after reconstitution.,Recommend to aliquot the protein into smaller quantities for optimal storage. Please minimize freeze-thaw cycles.
Expiry Date:	12 months

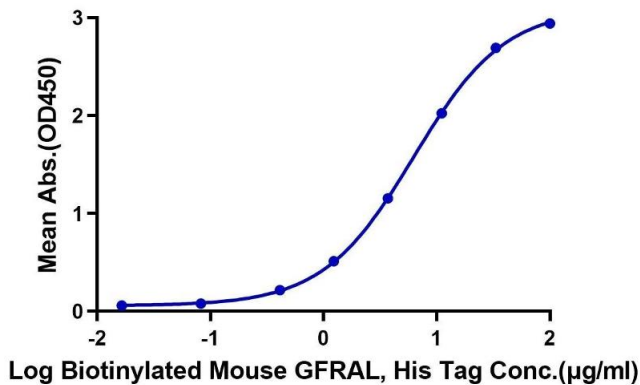


### SDS-PAGE

**Image 1.** Rat GDF15 on Tris-Bis PAGE under reduced (R) condition and Non reducing (N) condition. The purity is greater than 95 % .

### Rat GDF15, His Tag ELISA

0.5 $\mu$ g Rat GDF15, His Tag Per Well



### ELISA

**Image 2.** Immobilized Rat GDF15, His Tag at 5  $\mu$ g/mL (100  $\mu$ L/Well) on the plate. Dose response curve for Biotinylated Mouse GFRAL, His Tag with the EC<sub>50</sub> of 6.2  $\mu$ g/mL determined by ELISA.