

Datasheet for ABIN7274736

GFRAL Protein (AA 19-351) (Fc Tag)**4** Images[Go to Product page](#)

Overview

Quantity:	100 µg
Target:	GFRAL
Protein Characteristics:	AA 19-351
Origin:	Human
Source:	HEK-293 Cells
Protein Type:	Recombinant
Purification tag / Conjugate:	This GFRAL protein is labelled with Fc Tag.

Product Details

Purpose:	Human GFRAL/GFR alpha-like Protein
Sequence:	Ser19-Glu351
Characteristics:	Recombinant Human GFRAL/GFR alpha-like Protein is expressed from HEK293 with hFc tag at the C-Terminus. It contains Ser19-Glu351.
Purity:	> 95 % as determined by Tris-Bis PAGE, > 95 % as determined by HPLC
Sterility:	0.22 µm filtered
Endotoxin Level:	Less than 1EU per µg by the LAL method.
Biological Activity Comment:	Immobilized Human GDF15, His Tag at 0.5µg/ml (100µl/well) on the plate. Dose response curve for Human GFRAL, hFc Tag with the EC50 of 15ng/ml determined by ELISA. The affinity constant of 0.014 nM as determined in SPR assay (Biacore T200). See testing image for detail.

Target Details

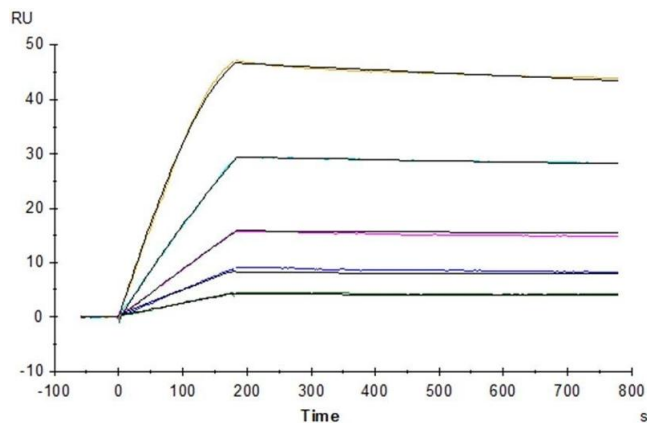
Target:	GFRAL
Alternative Name:	GFRAL (GFRAL Products)
Background:	<p>GFR alpha -like (GDNF receptor-alpha-like) is a distant member of the GDNFR family of proteins. Mature human GFR alpha-like is a 376 amino acid (aa) type I transmembrane protein. It contains a 333 aa extracellular domain, a 20 aa transmembrane domain and a 23 aa cytoplasmic domain. GFRAL is a brainstem-restricted receptor for GDF15 which regulates food intake, energy expenditure and body weight in response to metabolic and toxin-induced stresses.</p>
Molecular Weight:	64.6 kDa. Due to glycosylation, the protein migrates to 70-80 kDa based on Tris-Bis PAGE result.
UniProt:	Q6UXV0

Application Details

Restrictions:	For Research Use only
---------------	-----------------------

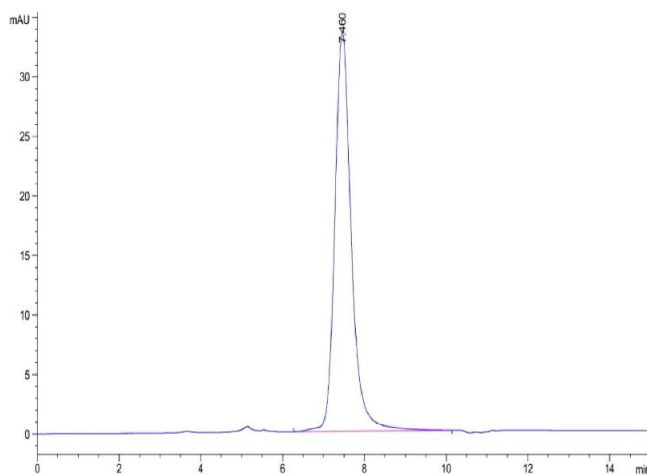
Handling

Format:	Lyophilized
Reconstitution:	Centrifuge the tube before opening. Reconstituting to a concentration more than 100 µg/mL is recommended. Dissolve the lyophilized protein in distilled water.
Buffer:	Lyophilized from 0.22µm filtered solution in PBS (pH 7.4). Normally 8 % trehalose is added as protectant before lyophilization.
Storage:	-20 °C,-80 °C
Storage Comment:	-20 to -80°C for 12 months as supplied from date of receipt., -80°C for 3-6 months after reconstitution., 2-8°C for 2-7 days after reconstitution., Recommend to aliquot the protein into smaller quantities for optimal storage. Please minimize freeze-thaw cycles.
Expiry Date:	12 months



Surface Plasmon Resonance

Image 1. Human GFRAL, hFc Tag captured on CM5 Chip via Protein A can bind Human GDF15, His Tag with an affinity constant of 0.014 nM as determined in SPR assay (Biacore T200).

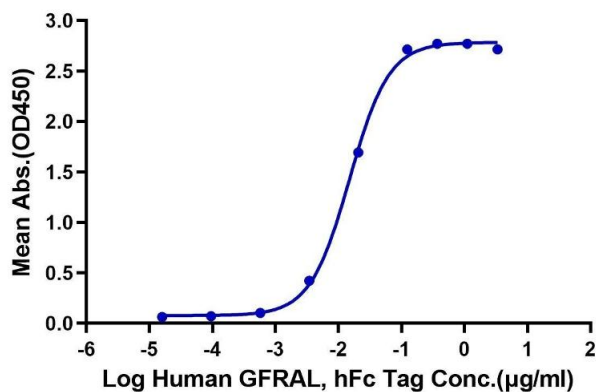


Size-exclusion chromatography-High Pressure Liquid Chromatography

Image 2. The purity of Human GFRAL is greater than 95 % as determined by SEC-HPLC.

Human GFRAL, hFc Tag ELISA

0.05µg Human GDF15, His Tag Per Well



ELISA

Image 3. Immobilized Human GDF15, His Tag at 0.5 µg/mL (100 µL/well) on the plate. Dose response curve for Human GFRAL, hFc Tag with the EC50 of 15 ng/mL determined by ELISA.

Please check the [product details page](#) for more images. Overall 4 images are available for ABIN7274736.