

Datasheet for ABIN7274737

**GFRAL Protein (AA 19-351) (His-Avi Tag)**

5 Images

[Go to Product page](#)

## Overview

Quantity:	100 µg
Target:	GFRAL
Protein Characteristics:	AA 19-351
Origin:	Human
Source:	HEK-293 Cells
Protein Type:	Recombinant
Purification tag / Conjugate:	This GFRAL protein is labelled with His-Avi Tag.

## Product Details

Purpose:	Human GFRAL/GFR alpha-like Protein
Sequence:	Ser19-Glu351
Characteristics:	Recombinant Human GFRAL/GFR alpha-like Protein is expressed from HEK293 with His tag and Avi tag at the C-Terminus. It contains Ser19-Glu351.
Purity:	> 95 % as determined by Tris-Bis PAGE, > 95 % as determined by HPLC
Sterility:	0.22 µm filtered
Endotoxin Level:	Less than 1EU per µg by the LAL method.
Biological Activity Comment:	Immobilized Human GFRAL, His Tag at 0.5µg/ml (100µl/Well). Dose response curve for Human GDF15, hFc Tag with the EC50 of 9.4ng/ml determined by ELISA. See testing image for detail.

## Target Details

Target:	GFRAL
Alternative Name:	GFRAL ( <a href="#">GFRAL Products</a> )
Background:	<p>GFR alpha -like (GDNF receptor-alpha-like) is a distant member of the GDNFR family of proteins. Mature human GFR alpha-like is a 376 amino acid (aa) type I transmembrane protein. It contains a 333 aa extracellular domain, a 20 aa transmembrane domain and a 23 aa cytoplasmic domain. GFRAL is a brainstem-restricted receptor for GDF15 which regulates food intake, energy expenditure and body weight in response to metabolic and toxin-induced stresses.</p>
Molecular Weight:	40.7 kDa. Due to glycosylation, the protein migrates to 48-62 kDa based on Tris-Bis PAGE result.
UniProt:	<a href="#">Q6UXV0</a>

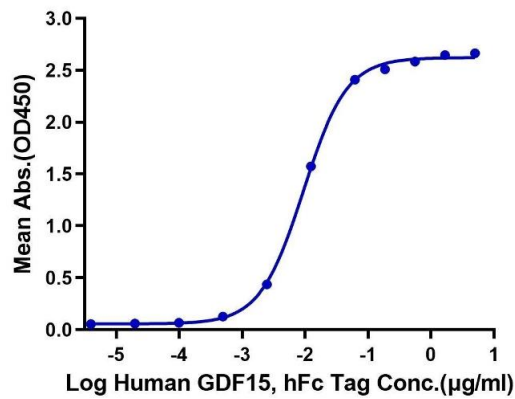
## Application Details

Restrictions:	For Research Use only
---------------	-----------------------

## Handling

Format:	Lyophilized
Reconstitution:	Centrifuge the tube before opening. Reconstituting to a concentration more than 100 µg/mL is recommended. Dissolve the lyophilized protein in distilled water.
Buffer:	Lyophilized from 0.22µm filtered solution in PBS ( pH 7.4). Normally 8 % trehalose is added as protectant before lyophilization.
Storage:	-20 °C, -80 °C
Storage Comment:	-20 to -80°C for 12 months as supplied from date of receipt., -80°C for 3-6 months after reconstitution., 2-8°C for 2-7 days after reconstitution., Recommend to aliquot the protein into smaller quantities for optimal storage. Please minimize freeze-thaw cycles.
Expiry Date:	12 months

**Human GFRAL, His Tag ELISA**  
0.05µg Human GFRAL, His Tag Per Well

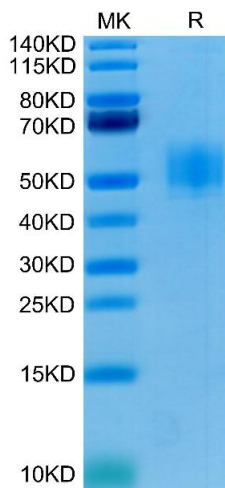
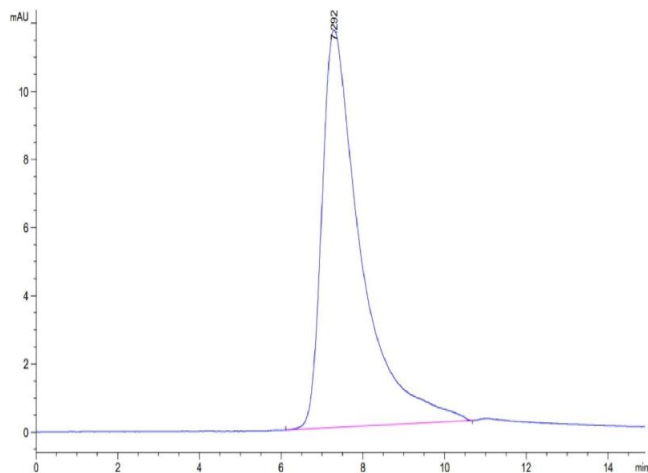


**ELISA**

**Image 1.** Immobilized Human GFRAL, His Tag at 0.5 µg/mL (100 µL/Well). Dose response curve for Human GDF15, hFc Tag with the EC50 of 9.4 ng/mL determined by ELISA.

**Size-exclusion chromatography-High Pressure Liquid Chromatography**

**Image 2.** The purity of Human GFRAL is greater than 95 % as determined by SEC-HPLC.



**SDS-PAGE**

**Image 3.** Human GFRAL on Tris-Bis PAGE under reduced condition. The purity is greater than 95 % .

Please check the [product details page](#) for more images. Overall 5 images are available for ABIN7274737.