



[Go to Product page](#)

Datasheet for ABIN7274758

## SARS-CoV-2 Spike Protein (P.1 - gamma, RBD) (His tag)

### 3 Images

#### Overview

|                               |   |
|-------------------------------|---|
| Quantity:                     | 100 µg  |
| Target:                       | SARS-CoV-2 Spike  |
| Protein Characteristics:      | P.1 - gamma, RBD  |
| Origin:                       | SARS Coronavirus-2 (SARS-CoV-2)                         |
| Source:                       | HEK-293 Cells   |
| Protein Type:                 | Recombinant   |
| Purification tag / Conjugate: | This SARS-CoV-2 Spike protein is labelled with His tag. |

#### Product Details

|                              |   |
|------------------------------|---|
| Purpose:                     | SARS-CoV-2 Spike RBD (Gamma P.1/P.1.1/P.1.2) Protein  |
| Sequence:                    | Arg319-Phe541 (K417T, E484K, N501Y)   |
| Characteristics:             | Recombinant SARS-CoV-2 Spike RBD (Gamma P.1/P.1.1/P.1.2) Protein is expressed from HEK293 with His tag at the C-Terminus.It contains Arg319-Phe541(K417T, E484K, N501Y).  |
| Purity:                      | > 95 % as determined by Tris-Bis PAGE,> 95 % as determined by HPLC  |
| Sterility:                   | 0.22 µm filtered  |
| Endotoxin Level:             | Less than 1EU per µg by the LAL method.   |
| Biological Activity Comment: | Immobilized SARS-CoV-2 Spike RBD (Gamma P.1/P.1.1/P.1.2) , His Tag at 0.5µg/ml (100µl/well) on the plate. Dose response curve for Human ACE2, hFc Tag with the EC50 of 27.7ng/ml determined by ELISA. See testing image for detail. |

## Target Details

---

|                   |   |
|-------------------|---|
| Target:           | SARS-CoV-2 Spike  |
| Abstract:         | <a href="#">SARS-CoV-2 Spike Products</a>   |
| Target Type:      | Viral Protein   |
| Background:       | The spike protein (S) of coronavirus (CoV) attaches the virus to its cellular receptor, angiotensin-converting enzyme 2 (ACE2). A defined receptor-binding domain (RBD) on S mediates this interaction. The S protein plays key parts in the induction of neutralizing-antibody and T-cell responses, as well as protective immunity. |
| Molecular Weight: | 26.21 kDa. Due to glycosylation, the protein migrates to 35-40 kDa based on Tris-Bis PAGE result.   |

## Application Details

---

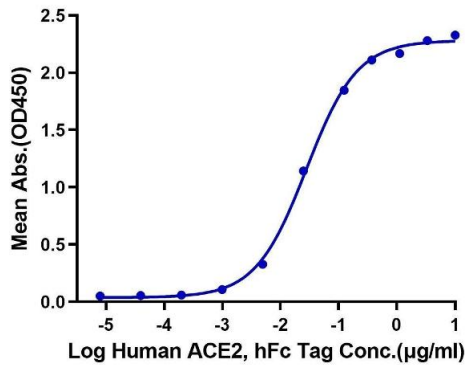
|               |                       |
|---------------|-----------------------|
| Restrictions: | For Research Use only |
|---------------|-----------------------|

## Handling

---

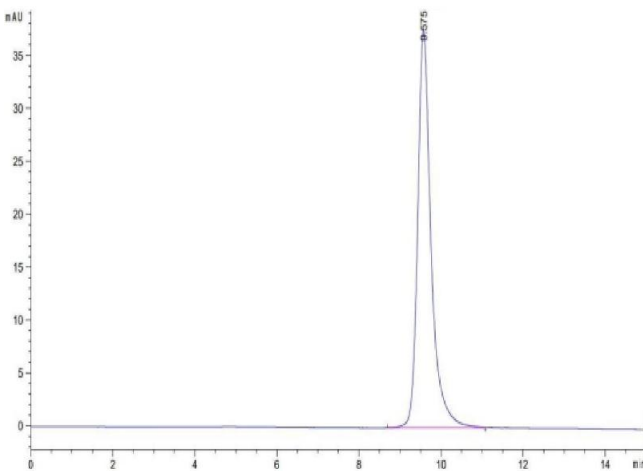
|                  |  |
|------------------|--|
| Format:          | Lyophilized  |
| Reconstitution:  | Centrifuge the tube before opening. Reconstituting to a concentration more than 100 µg/mL is recommended. Dissolve the lyophilized protein in distilled water.   |
| Buffer:          | Lyophilized from 0.22µm filtered solution in PBS ( pH 7.4). Normally 8 % trehalose is added as protectant before lyophilization.   |
| Storage:         | -20 °C,-80 °C  |
| Storage Comment: | -20 to -80°C for 12 months as supplied from date of receipt.,-80°C for 3-6 months after reconstitution.,2-8°C for 2-7 days after reconstitution.,Recommend to aliquot the protein into smaller quantities for optimal storage. Please minimize freeze-thaw cycles. |
| Expiry Date:     | 12 months  |

**SARS-CoV-2 Spike RBD (Gamma P.1/P.1.1/P.1.2), His Tag ELISA**  
 0.05µg SARS-CoV-2 Spike RBD (Gamma P.1/P.1.1/P.1.2), His Tag Per Well



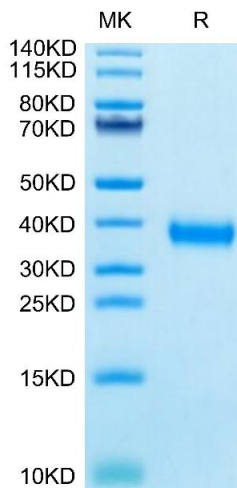
**ELISA**

**Image 1.** Immobilized SARS-CoV-2 Spike RBD (Gamma P.1/P.1.1/P.1.2) , His Tag at 0.5 µg/mL (100 µL/well) on the plate. Dose response curve for Human ACE2, hFc Tag with the EC50 of 27.7 ng/mL determined by ELISA.



**Size-exclusion chromatography-High Pressure Liquid Chromatography**

**Image 2.** The purity of SARS-CoV-2 Spike RBD (Gamma P.1/P.1.1/P.1.2) is greater than 95 % as determined by SEC-HPLC.



**SDS-PAGE**

**Image 3.** SARS-CoV-2 Spike RBD (Gamma P.1/P.1.1/P.1.2) on Tris-Bis PAGE under reduced condition. The purity is greater than 95 % .