

Datasheet for ABIN7274759

GP6 Protein (AA 21-251) (His tag)**3** Images[Go to Product page](#)

Overview

Quantity:	100 µg
Target:	GP6
Protein Characteristics:	AA 21-251
Origin:	Cynomolgus
Source:	HEK-293 Cells
Protein Type:	Recombinant
Purification tag / Conjugate:	This GP6 protein is labelled with His tag.

Product Details

Purpose:	Cynomolgus GPVI Protein
Sequence:	Gln21-Asn251
Characteristics:	Recombinant Cynomolgus GPVI Protein is expressed from HEK293 with His tag at the C-Terminus. It contains Gln21-Asn251.
Purity:	> 95 % as determined by Tris-Bis PAGE, > 95 % as determined by HPLC
Sterility:	0.22 µm filtered
Endotoxin Level:	Less than 1EU per µg by the LAL method.
Biological Activity Comment:	Immobilized Cynomolgus GPVI, His Tag at 0.5µg/ml (100µl/well) on the plate. Dose response curve for Anti-GPVI Antibody, hFc Tag with the EC50 of 5.3ng/ml determined by ELISA. See testing image for detail.

Target Details

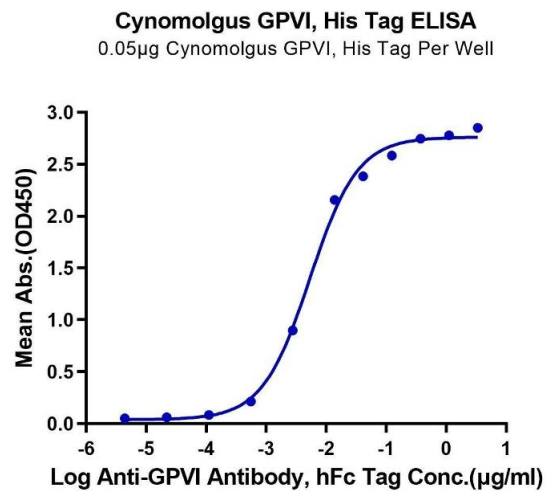
Target:	GP6
Alternative Name:	GPVI (GP6 Products)
Background:	Although platelets are best known for their role in hemostasis, they are also crucial in development, host defense, inflammation, and tissue repair. Many of these roles are regulated by the immune-like receptors glycoprotein VI (GPVI) and C-type lectin receptor 2 (CLEC-2), which signal through an immunoreceptor tyrosine-based activation motif (ITAM). GPVI is activated by collagen in the subendothelial matrix, by fibrin and fibrinogen in the thrombus, and by a remarkable number of other ligands.
Molecular Weight:	26.42 kDa. Due to glycosylation, the protein migrates to 50-60 kDa based on Tris-Bis PAGE result.
NCBI Accession:	XP_005590417

Application Details

Restrictions:	For Research Use only
---------------	-----------------------

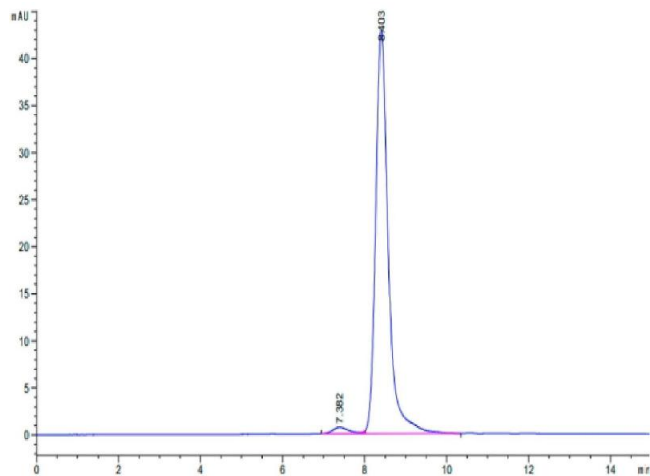
Handling

Format:	Lyophilized
Reconstitution:	Centrifuge the tube before opening. Reconstituting to a concentration more than 100 µg/mL is recommended. Dissolve the lyophilized protein in distilled water.
Buffer:	Lyophilized from 0.22µm filtered solution in PBS (pH 7.4). Normally 8 % trehalose is added as protectant before lyophilization.
Storage:	-20 °C,-80 °C
Storage Comment:	-20 to -80°C for 12 months as supplied from date of receipt.,-80°C for 3-6 months after reconstitution.,2-8°C for 2-7 days after reconstitution.,Recommend to aliquot the protein into smaller quantities for optimal storage. Please minimize freeze-thaw cycles.
Expiry Date:	12 months



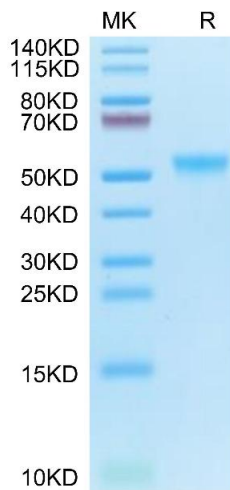
ELISA

Image 1. Immobilized Cynomolgus GPVI, His Tag at 0.5 µg/mL (100 µL/well) on the plate. Dose response curve for Anti-GPVI Antibody, hFc Tag with the EC50 of 5.3 ng/mL determined by ELISA.



Size-exclusion chromatography-High Pressure Liquid Chromatography

Image 2. The purity of Cynomolgus GPVI is greater than 95 % as determined by SEC-HPLC.



SDS-PAGE

Image 3. Cynomolgus GPVI on Tris-Bis PAGE under reduced condition. The purity is greater than 95 % .