

Datasheet for ABIN7274760

**GP6 Protein (AA 21-267) (His tag)****3** Images[Go to Product page](#)

## Overview

Quantity:	100 µg
Target:	GP6
Protein Characteristics:	AA 21-267
Origin:	Human
Source:	HEK-293 Cells
Protein Type:	Recombinant
Purification tag / Conjugate:	This GP6 protein is labelled with His tag.

## Product Details

Purpose:	Human GPVI Protein
Sequence:	Gln21-Lys267
Characteristics:	Recombinant Human GPVI Protein is expressed from HEK293 with His tag at the C-Terminus. It contains Gln21-Lys267.
Purity:	> 95 % as determined by Tris-Bis PAGE, > 95 % as determined by HPLC
Sterility:	0.22 µm filtered
Endotoxin Level:	Less than 1EU per µg by the LAL method.
Biological Activity Comment:	Immobilized Human GPVI, His Tag at 0.5µg/ml (100µl/Well) on the plate. Dose response curve for Anti-GPVI Antibody, hFc Tag with the EC50 of 14.8ng/ml determined by ELISA. See testing image for detail.

## Target Details

Target:	GP6
Alternative Name:	GPVI ( <a href="#">GP6 Products</a> )
Background:	Although platelets are best known for their role in hemostasis, they are also crucial in development, host defense, inflammation, and tissue repair. Many of these roles are regulated by the immune-like receptors glycoprotein VI (GPVI) and C-type lectin receptor 2 (CLEC-2), which signal through an immunoreceptor tyrosine-based activation motif (ITAM). GPVI is activated by collagen in the subendothelial matrix, by fibrin and fibrinogen in the thrombus, and by a remarkable number of other ligands.
Molecular Weight:	28 kDa. Due to glycosylation, the protein migrates to 50-60 kDa based on Tris-Bis PAGE result.

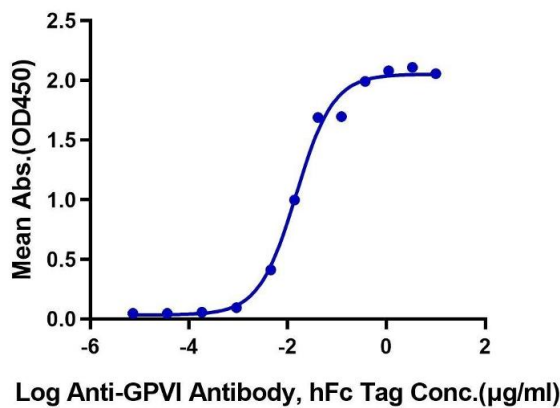
## Application Details

Restrictions:	For Research Use only
---------------	-----------------------

## Handling

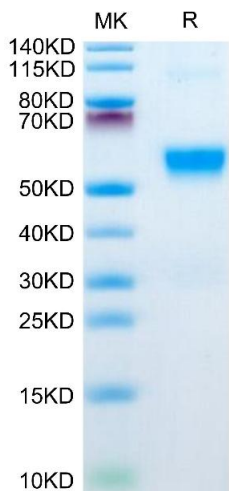
Format:	Lyophilized
Reconstitution:	Centrifuge the tube before opening. Reconstituting to a concentration more than 100 µg/mL is recommended. Dissolve the lyophilized protein in distilled water.
Buffer:	Lyophilized from 0.22µm filtered solution in PBS ( pH 7.4). Normally 8 % trehalose is added as protectant before lyophilization.
Storage:	-20 °C,-80 °C
Storage Comment:	-20 to -80°C for 12 months as supplied from date of receipt.,-80°C for 3-6 months after reconstitution.,2-8°C for 2-7 days after reconstitution.,Recommend to aliquot the protein into smaller quantities for optimal storage. Please minimize freeze-thaw cycles.
Expiry Date:	12 months

**Human GPVI, His Tag ELISA**  
0.05µg Human GPVI, His Tag Per Well



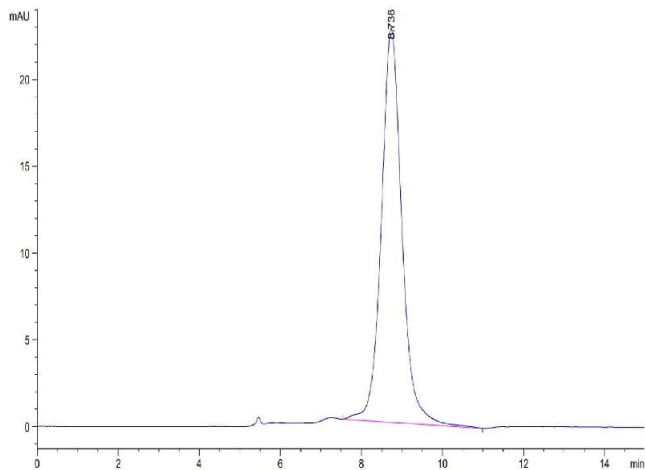
**ELISA**

**Image 1.** Immobilized Human GPVI, His Tag at 0.5 µg/mL (100 µL/Well) on the plate. Dose response curve for Anti-GPVI Antibody, hFc Tag with the EC50 of 14.8 ng/mL determined by ELISA.



**SDS-PAGE**

**Image 2.** Human GPVI on Tris-Bis PAGE under reduced condition. The purity is greater than 95 % .



**Size-exclusion chromatography-High Pressure Liquid Chromatography**

**Image 3.** The purity of Human GPVI is greater than 95 % as determined by SEC-HPLC.