

Datasheet for ABIN7274765

**CD235a/GYPA Protein (AA 20-91) (Fc Tag)****3** Images[Go to Product page](#)

## Overview

Quantity:	100 µg
Target:	CD235a/GYPA (GYPA)
Protein Characteristics:	AA 20-91
Origin:	Human
Source:	HEK-293 Cells
Protein Type:	Recombinant
Purification tag / Conjugate:	This CD235a/GYPA protein is labelled with Fc Tag.

## Product Details

Purpose:	Human GPA Protein
Sequence:	Ser20-Glu91
Characteristics:	Recombinant Human GPA Protein is expressed from HEK293 with hFc tag at the C-Terminus. It contains Ser20-Glu91.
Purity:	> 95 % as determined by Tris-Bis PAGE, > 95 % as determined by HPLC
Sterility:	0.22 µm filtered
Endotoxin Level:	Less than 1EU per µg by the LAL method.
Biological Activity Comment:	The affinity constant of 1.16 µM as determined in SPR assay (Biacore T200). See testing image for detail.

## Target Details

Target:	CD235a/GYPA (GYPA)
Alternative Name:	GPA ( <a href="#">GYPA Products</a> )
Background:	Granulomatosis with polyangiitis (GPA) presents a wide spectrum of manifestations from the common respiratory symptoms to infrequent neurological and cardiac complications. The challenge in diagnosis and management makes the rapidly progressive disorder one of the most challenging dilemmas in clinical medicine. The ultimate goal is an improved prognosis through outcome measures which assesses the disease control with minimal adverse effects of intensive immunosuppressive regimens, an integral part of the clinical approach to improve the quality of life of GPA patients.
Molecular Weight:	34.7 kDa. Due to glycosylation, the protein migrates to 45-70 kDa based on Tris-Bis PAGE result.
Pathways:	<a href="#">Maintenance of Protein Location</a>

## Application Details

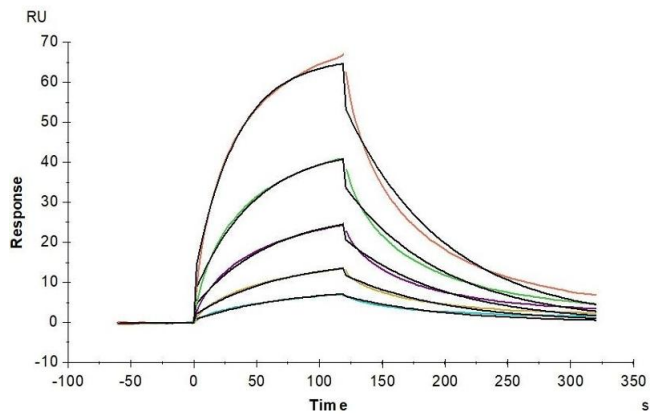
Restrictions:	For Research Use only
---------------	-----------------------

## Handling

Format:	Lyophilized
Reconstitution:	Centrifuge the tube before opening. Reconstituting to a concentration more than 100 µg/mL is recommended. Dissolve the lyophilized protein in distilled water.
Buffer:	Lyophilized from 0.22µm filtered solution in PBS ( pH 7.4). Normally 8 % trehalose is added as protectant before lyophilization.
Storage:	-20 °C,-80 °C
Storage Comment:	-20 to -80°C for 12 months as supplied from date of receipt., -80°C for 3-6 months after reconstitution., 2-8°C for 2-7 days after reconstitution., Recommend to aliquot the protein into smaller quantities for optimal storage. Please minimize freeze-thaw cycles.
Expiry Date:	12 months

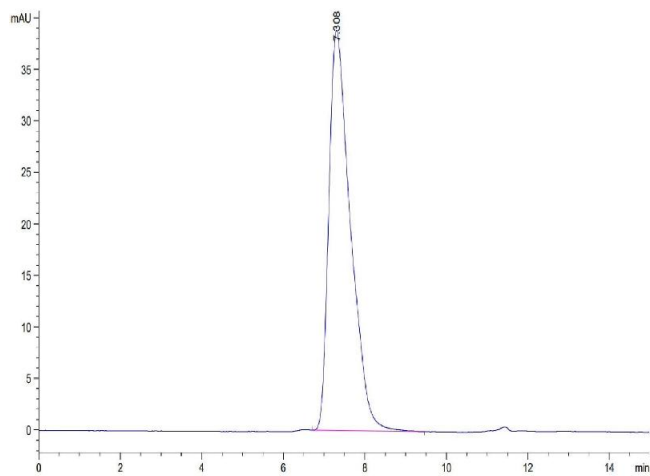
Surface Plasmon Resonance

**Image 1.** Anti-GPA Antibody immobilized on CM5 Chip can bind Human GPA, hFc Tag with an affinity constant of 1.16  $\mu$ M as determined in SPR assay (Biacore T200).



Size-exclusion chromatography-High Pressure Liquid Chromatography

**Image 2.** The purity of Human GPA is greater than 95 % as determined by SEC-HPLC.



SDS-PAGE

**Image 3.** Human GPA on Tris-Bis PAGE under reduced condition. The purity is greater than 95 % .

