

Datasheet for ABIN7274773

**GPC1 Protein (AA 24-530) (His tag)****4** Images[Go to Product page](#)

## Overview

Quantity:	100 µg
Target:	GPC1
Protein Characteristics:	AA 24-530
Origin:	Human
Source:	HEK-293 Cells
Protein Type:	Recombinant
Purification tag / Conjugate:	This GPC1 protein is labelled with His tag.

## Product Details

Purpose:	Human Glypican 1/GPC1 Protein
Sequence:	Asp24-Ser530
Characteristics:	Recombinant Human Glypican 1/GPC1 Protein is expressed from HEK293 with His tag at the C-Terminus. It contains Asp24-Ser530.
Purity:	> 95 % as determined by Tris-Bis PAGE, > 95 % as determined by HPLC
Sterility:	0.22 µm filtered
Endotoxin Level:	Less than 1EU per µg by the LAL method.
Biological Activity Comment:	Immobilized Human FGF basic at 0.5µg/ml (100µl/Well) on the plate. Dose response curve for Human Glypican 1, His Tag with the EC50 of 21.9ng/ml determined by ELISA. See testing image for detail.

## Target Details

Target:	GPC1
Alternative Name:	Glypican 1 ( <a href="#">GPC1 Products</a> )
Background:	CAR-T cells targeting glypican-1 (GPC1)-specific human and murine CAR-T cells generated from our original anti-human/mouse GPC1 antibody showed strong antitumor effects in xenogeneic and syngeneic mouse models, respectively. Importantly, the murine CAR-T cells enhanced endogenous T cell responses against a non-GPC1 tumor antigen through the mechanism of antigen-spreading and showed synergistic antitumor effects with anti-PD-1 antibody without any adverse effects in syngeneic models.
Molecular Weight:	57.1 kDa. Due to glycosylation, the protein migrates to 70-135 kDa based on Tris-Bis PAGE result.
Pathways:	<a href="#">Glycosaminoglycan Metabolic Process</a> , <a href="#">Regulation of Muscle Cell Differentiation</a>

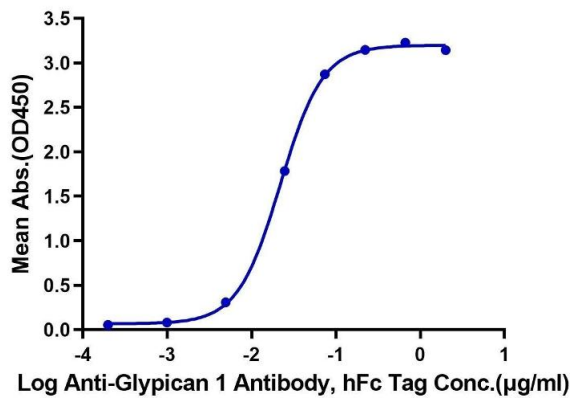
## Application Details

Restrictions:	For Research Use only
---------------	-----------------------

## Handling

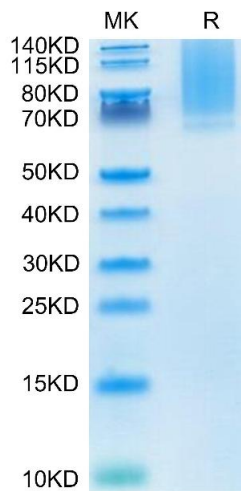
Format:	Lyophilized
Reconstitution:	Centrifuge the tube before opening. Reconstituting to a concentration more than 100 µg/mL is recommended. Dissolve the lyophilized protein in distilled water.
Buffer:	Lyophilized from 0.22µm filtered solution in PBS ( pH 7.4). Normally 8 % trehalose is added as protectant before lyophilization.
Storage:	-20 °C,-80 °C
Storage Comment:	-20 to -80°C for 12 months as supplied from date of receipt., -80°C for 3-6 months after reconstitution., 2-8°C for 2-7 days after reconstitution., Recommend to aliquot the protein into smaller quantities for optimal storage. Please minimize freeze-thaw cycles.
Expiry Date:	12 months

**Human Glypican 1, His Tag ELISA**  
0.05µg Human Glypican 1, His Tag Per Well



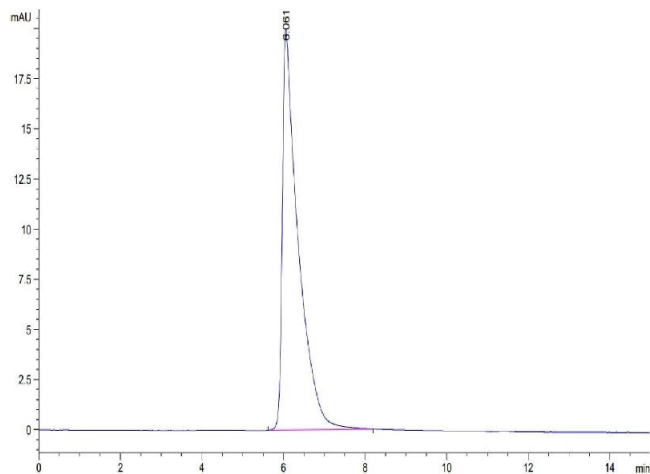
**ELISA**

**Image 1.** Immobilized Human Glypican 1, His Tag at 0.5 µg/mL (100 µL/well) on the plate. Dose response curve for Anti-Glypican 1 Antibody, hFc Tag with the EC50 of 21.9 ng/mL determined by ELISA.



**SDS-PAGE**

**Image 2.** Human Glypican 1 on Tris-Bis PAGE under reduced condition. The purity is greater than 95 % .



**Size-exclusion chromatography-High Pressure Liquid Chromatography**

**Image 3.** The purity of Human Glypican 1 is greater than 95 % as determined by SEC-HPLC.

Please check the [product details page](#) for more images. Overall 4 images are available for ABIN7274773.