

Datasheet for ABIN7274774

Glypican 3 Protein (GPC3) (AA 25-559) (His tag)**4** Images[Go to Product page](#)

Overview

Quantity:	100 µg
Target:	Glypican 3 (GPC3)
Protein Characteristics:	AA 25-559
Origin:	Human
Source:	HEK-293 Cells
Protein Type:	Recombinant
Purification tag / Conjugate:	This Glypican 3 protein is labelled with His tag.

Product Details

Purpose:	Human GPC3/Glypican 3 Protein
Sequence:	Gln25-His559
Characteristics:	Recombinant Human GPC3/Glypican 3 Protein is expressed from HEK293 with His tag at the C-Terminus. It contains Gln25-His559.
Purity:	> 95 % as determined by Tris-Bis PAGE, > 95 % as determined by HPLC
Sterility:	0.22 µm filtered
Endotoxin Level:	Less than 1EU per µg by the LAL method.
Biological Activity Comment:	Immobilized Human GPC3, His Tag at 0.5µg/ml (100µl/Well). Dose response curve for Anti-GPC3 Antibody, hFc Tag with the EC50 of 11.7ng/ml determined by ELISA. See testing image for detail.

Target Details

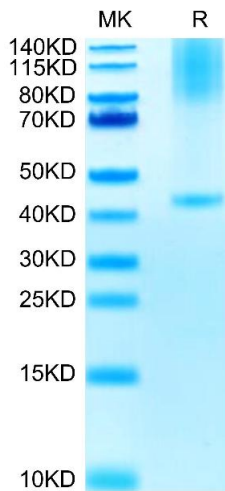
Target:	Glypican 3 (GPC3)
Alternative Name:	GPC3 (GPC3 Products)
Background:	Glypican-3 is a protein ,which is encoded by the GPC3 gene in humans.The protein core of GPC3 consists of two subunits, where the N-terminal subunit has a size of ~40 kDa and the C-terminal subunit is ~30 kDa.Glypican 3 is a potential therapeutic target for treating liver cancer and other cancers. Several therapeutic anti-GPC3 antibodies have been developed.
Molecular Weight:	61.6 kDa. Due to glycosylation, the protein migrates to 42 kDa, 70-115 kDa based on Tris-Bis PAGE result.
Pathways:	Glycosaminoglycan Metabolic Process

Application Details

Restrictions:	For Research Use only
---------------	-----------------------

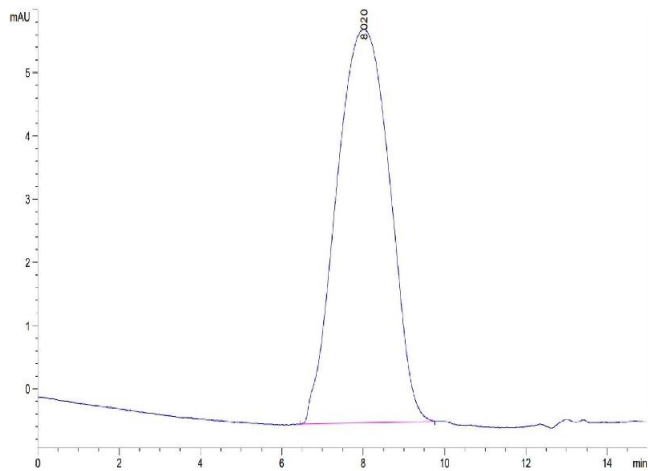
Handling

Format:	Lyophilized
Reconstitution:	Centrifuge the tube before opening. Reconstituting to a concentration more than 100 µg/mL is recommended. Dissolve the lyophilized protein in distilled water.
Buffer:	Lyophilized from 0.22µm filtered solution in PBS (pH 7.4). Normally 8 % trehalose is added as protectant before lyophilization.
Storage:	-20 °C,-80 °C
Storage Comment:	-20 to -80°C for 12 months as supplied from date of receipt.,-80°C for 3-6 months after reconstitution.,2-8°C for 2-7 days after reconstitution.,Recommend to aliquot the protein into smaller quantities for optimal storage. Please minimize freeze-thaw cycles.
Expiry Date:	12 months



SDS-PAGE

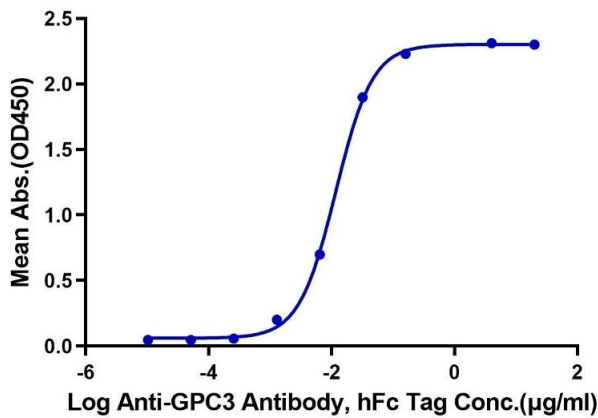
Image 1. Human GPC3 on Tris-Bis PAGE under reduced condition. The purity is greater than 90 % .



Size-exclusion chromatography-High Pressure Liquid Chromatography

Image 2. The purity of Human GPC3 is greater than 95 % as determined by SEC-HPLC.

Human GPC3, His Tag ELISA
0.05µg Human GPC3, His Tag Per Well



ELISA

Image 3. Immobilized Human GPC3, His Tag at 0.5 µg/mL (100 µL/Well). Dose response curve for Anti-GPC3 Antibody, hFc Tag with the EC50 of 11.7 ng/mL determined by ELISA.

Please check the [product details page](#) for more images. Overall 4 images are available for ABIN7274774.