

Datasheet for ABIN7274780
GM-CSF Protein (AA 18-144)[Go to Product page](#)

4 Images

Overview

Quantity:	100 µg
Target:	GM-CSF (CSF2)
Protein Characteristics:	AA 18-144
Origin:	Human
Source:	Escherichia coli (E. coli)
Protein Type:	Recombinant

Product Details

Purpose:	Human GM-CSF Protein
Sequence:	Ala18-Glu144
Characteristics:	Recombinant Human GM-CSF Protein is expressed from E.coli without tag.It contains Ala18-Glu144.
Purity:	> 95 % as determined by Tris-Bis PAGE,> 95 % as determined by HPLC
Sterility:	0.22 µm filtered
Endotoxin Level:	Less than 1EU per µg by the LAL method.
Biological Activity Comment:	Immobilized Human GM-CSF at 2µg/ml (100µl/Well) on the plate. Dose response curve for Human GM-CSF R alpha, hFc Tag with the EC50 of 18.5ng/ml determined by ELISA. The affinity constant of 0.79nM as determined in SPR assay (Biacore T200). See testing image for detail.

Target Details

Target:	GM-CSF (CSF2)
---------	---------------

Target Details

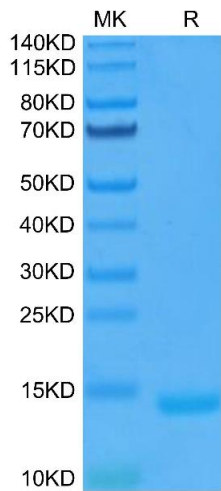
Alternative Name:	GM-CSF (CSF2 Products)
Background:	Granulocyte-macrophage colony-stimulating factor (GM-CSF), also known as colony-stimulating factor 2 (CSF2), is a monomeric glycoprotein secreted by macrophages, T cells, mast cells, natural killer cells, endothelial cells and fibroblasts that functions as a cytokine. The pharmaceutical analogs of naturally occurring GM-CSF are called sargramostim and molgramostim.
Molecular Weight:	14.6 kDa same as Tris-Bis PAGE result.
UniProt:	P04141
Pathways:	JAK-STAT Signaling , Cellular Response to Molecule of Bacterial Origin

Application Details

Restrictions:	For Research Use only
---------------	-----------------------

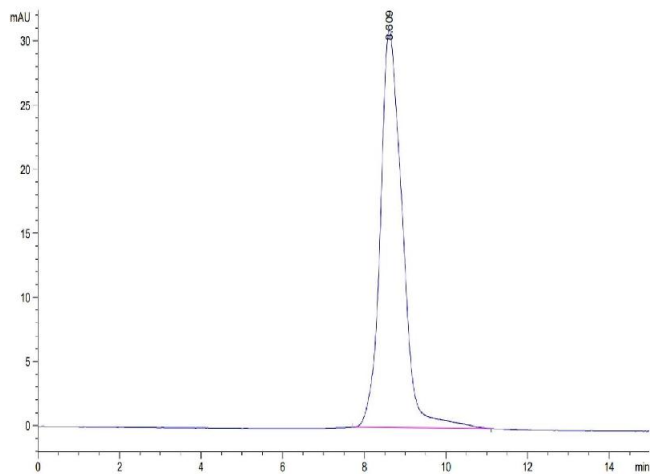
Handling

Format:	Lyophilized
Reconstitution:	Centrifuge the tube before opening. Reconstituting to a concentration more than 100 µg/mL is recommended. Dissolve the lyophilized protein in distilled water.
Buffer:	Lyophilized from 0.22µm filtered solution in PBS (pH 7.4). Normally 8 % trehalose is added as protectant before lyophilization.
Storage:	-20 °C,-80 °C
Storage Comment:	-20 to -80°C for 12 months as supplied from date of receipt., -80°C for 3-6 months after reconstitution., 2-8°C for 2-7 days after reconstitution., Recommend to aliquot the protein into smaller quantities for optimal storage. Please minimize freeze-thaw cycles.
Expiry Date:	12 months



SDS-PAGE

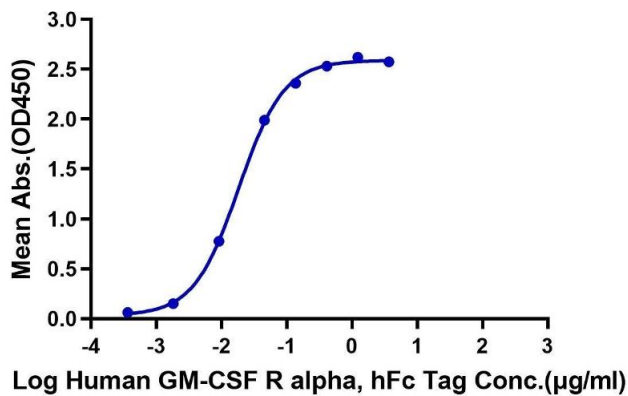
Image 1. Human GM-CSF on Tris-Bis PAGE under reduced condition. The purity is greater than 95 % .



Size-exclusion chromatography-High Pressure Liquid Chromatography

Image 2. The purity of Human GM-CSF is greater than 95 % as determined by SEC-HPLC.

Human GM-CSF, No Tag ELISA
0.2µg Human GM-CSF, No Tag Per Well



ELISA

Image 3. Immobilized Human GM-CSF at 2 µg/mL (100 µ L/Well) on the plate. Dose response curve for Human GM-CSF R alpha, hFc Tag with the EC50 of 18.5 ng/mL determined by ELISA.

Please check the [product details page](#) for more images. Overall 4 images are available for ABIN7274780.