

Datasheet for ABIN7274781

CSF2RA Protein (AA 23-320) (His tag)**6** Images[Go to Product page](#)

Overview

Quantity:	100 µg
Target:	CSF2RA
Protein Characteristics:	AA 23-320
Origin:	Human
Source:	HEK-293 Cells
Protein Type:	Recombinant
Purification tag / Conjugate:	This CSF2RA protein is labelled with His tag.

Product Details

Purpose:	Human GM-CSF R alpha Protein
Sequence:	Glu23-Gly320
Characteristics:	Recombinant Human GM-CSF R alpha Protein is expressed from HEK293 with His tag at the C-Terminus. It contains Glu23-Gly320.
Purity:	> 95 % as determined by Tris-Bis PAGE, > 95 % as determined by HPLC
Sterility:	0.22 µm filtered
Endotoxin Level:	Less than 1EU per µg by the LAL method.
Biological Activity Comment:	Immobilized Human GM-CSF, No Tag at 5µg/ml (100µl/Well) on the plate. Dose response curve for Human GM-CSF R alpha, His Tag with the EC50 of 1.0µg/ml determined by ELISA. The affinity constant of 0.79nM as determined in SPR assay (Biacore T200). See testing image for detail.

Target Details

Target:	CSF2RA
Alternative Name:	GM-CSF R alpha (CSF2RA Products)
Background:	In the first trimester, the GM-CSF-R was found to be present on villous cytotrophoblast and all populations of extravillous trophoblast. Expression by villous syncytiotrophoblast was weak or absent, but this increased markedly by term. GM-CSF-R were also expressed by fetal Hofbauer cells within the mesenchyme of the chorionic villi and by uterine glandular epithelium and decidual macrophages within maternal decidua.
Molecular Weight:	35.3 kDa. Due to glycosylation, the protein migrates to 60-70 kDa based on Tris-Bis PAGE result.
Pathways:	JAK-STAT Signaling

Application Details

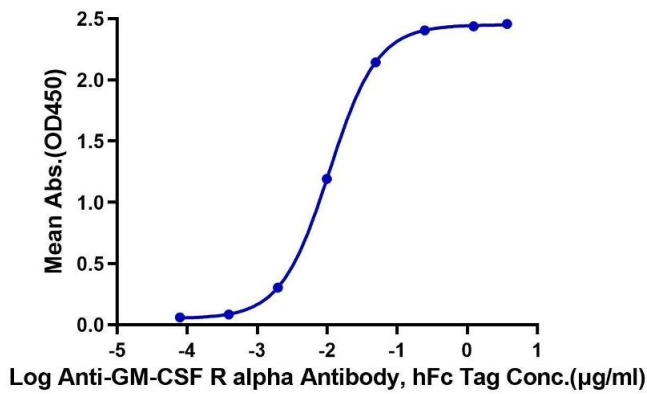
Restrictions:	For Research Use only
---------------	-----------------------

Handling

Format:	Lyophilized
Reconstitution:	Centrifuge the tube before opening. Reconstituting to a concentration more than 100 µg/mL is recommended. Dissolve the lyophilized protein in distilled water.
Buffer:	Lyophilized from 0.22µm filtered solution in PBS (pH 7.4). Normally 8 % trehalose is added as protectant before lyophilization.
Storage:	-20 °C,-80 °C
Storage Comment:	-20 to -80°C for 12 months as supplied from date of receipt.,-80°C for 3-6 months after reconstitution.,2-8°C for 2-7 days after reconstitution.,Recommend to aliquot the protein into smaller quantities for optimal storage. Please minimize freeze-thaw cycles.
Expiry Date:	12 months

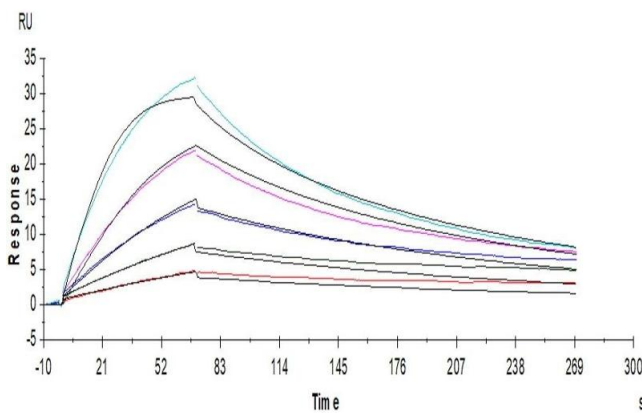
Human GM-CSF R alpha, His Tag ELISA

0.1µg Human GM-CSF R alpha, His Tag Per Well



ELISA

Image 1. Immobilized Human GM-CSF R alpha, His Tag at 1 µg/mL (100 µL/Well) on the plate. Dose response curve for Anti-GM-CSF R alpha Antibody, hFc Tag with the EC50 of 10.7 ng/mL determined by ELISA.

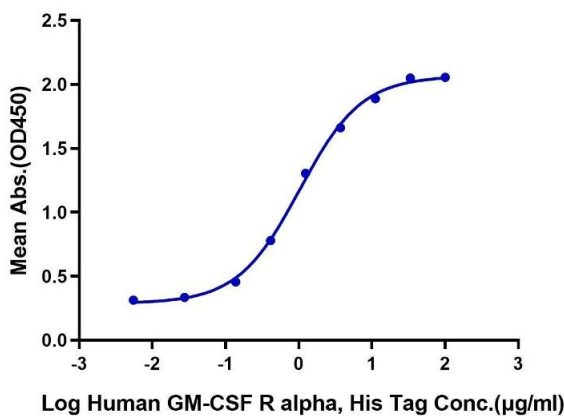


Surface Plasmon Resonance

Image 2. Human GM-CSF R alpha , His Tag captured on CM5 Chip via anti-His antibody can bind Human GM-CSF, No Tag with an affinity constant of 0.79nM as determined in SPR assay (Biacore T200).

Human GM-CSF, No Tag ELISA

0.5µg Human GM-CSF, No Tag Per Well



ELISA

Image 3. Immobilized Human GM-CSF at 5 µg/mL (100 µL/Well). Dose response curve for Human GM-CSF R alpha, His Tag with the EC50 of 1.0 µg/mL determined by ELISA.

Please check the [product details page](#) for more images. Overall 6 images are available for ABIN7274781.