



[Go to Product page](#)

Datasheet for ABIN7274782

CSF2RA Protein (AA 23-320) (Fc Tag)

4 Images

Overview

| | |
|-------------------------------|--|
| Quantity: | 100 µg |
| Target: | CSF2RA |
| Protein Characteristics: | AA 23-320 |
| Origin: | Human |
| Source: | HEK-293 Cells |
| Protein Type: | Recombinant |
| Purification tag / Conjugate: | This CSF2RA protein is labelled with Fc Tag. |

Product Details

| | |
|------------------------------|---|
| Purpose: | Human GM-CSF R alpha Protein |
| Sequence: | Glu23-Gly320 |
| Characteristics: | Recombinant Human GM-CSF R alpha Protein is expressed from HEK293 with hFc tag at the C-Terminus.It contains Glu23-Gly320. |
| Purity: | > 95 % as determined by Tris-Bis PAGE,> 95 % as determined by HPLC |
| Sterility: | 0.22 µm filtered |
| Endotoxin Level: | Less than 1EU per µg by the LAL method. |
| Biological Activity Comment: | Immobilized Human GM-CSF at 2µg/ml (100µl/Well) on the plate. Dose response curve for Human GM-CSF R alpha, hFc Tag with the EC50 of 18.5ng/ml determined by ELISA. See testing image for detail. |

Target Details

| | |
|-------------------|---|
| Target: | CSF2RA |
| Alternative Name: | GM-CSF R alpha (CSF2RA Products) |
| Background: | In the first trimester, the GM-CSF-R was found to be present on villous cytotrophoblast and all populations of extravillous trophoblast. Expression by villous syncytiotrophoblast was weak or absent, but this increased markedly by term. GM-CSF-R were also expressed by fetal Hofbauer cells within the mesenchyme of the chorionic villi and by uterine glandular epithelium and decidual macrophages within maternal decidua. |
| Molecular Weight: | 63.5 kDa. Due to glycosylation, the protein migrates to 80-100 kDa based on Tris-Bis PAGE result. |
| Pathways: | JAK-STAT Signaling |

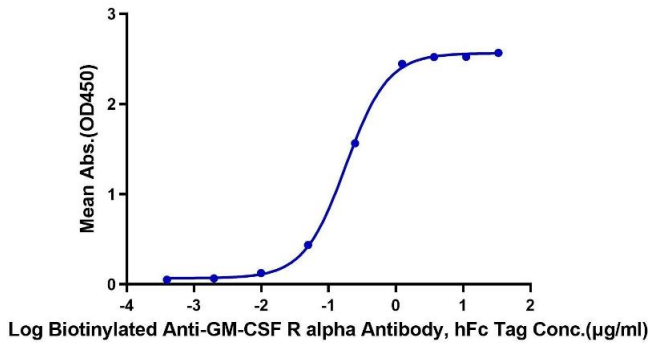
Application Details

| | |
|---------------|-----------------------|
| Restrictions: | For Research Use only |
|---------------|-----------------------|

Handling

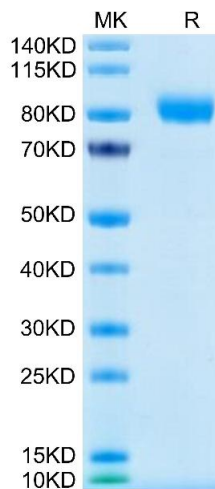
| | |
|------------------|---|
| Format: | Lyophilized |
| Reconstitution: | Centrifuge the tube before opening. Reconstituting to a concentration more than 100 µg/mL is recommended. Dissolve the lyophilized protein in distilled water. |
| Buffer: | Lyophilized from 0.22µm filtered solution in PBS (pH 7.4). Normally 8 % trehalose is added as protectant before lyophilization. |
| Storage: | -20 °C,-80 °C |
| Storage Comment: | -20 to -80°C for 12 months as supplied from date of receipt., -80°C for 3-6 months after reconstitution., 2-8°C for 2-7 days after reconstitution., Recommend to aliquot the protein into smaller quantities for optimal storage. Please minimize freeze-thaw cycles. |
| Expiry Date: | 12 months |

Human GM-CSF R alpha, hFc Tag ELISA
0.2µg Human GM-CSF R alpha, hFc Tag Per Well



ELISA

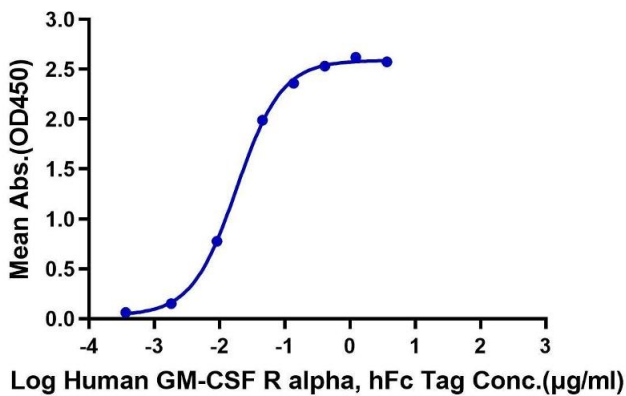
Image 1. Immobilized Human GM-CSF R alpha, hFc Tag at 2 µg/mL (100 µL/well) on the plate. Dose response curve for Biotinylated Anti-GM-CSF R alpha Antibody, hFc Tag with the EC50 of 0.18 µg/mL determined by ELISA.



SDS-PAGE

Image 2. Human GM-CSF R alpha on Tris-Bis PAGE under reduced condition. The purity is greater than 95 % .

Human GM-CSF R alpha, hFc Tag ELISA
0.2µg Human GM-CSF, No Tag Per Well



ELISA

Image 3. Immobilized Human GM-CSF at 2 µg/mL (100 µ L/Well) on the plate. Dose response curve for Human GM-CSF R alpha, hFc Tag with the EC50 of 18.5 ng/mL determined by ELISA.

Please check the [product details page](#) for more images. Overall 4 images are available for ABIN7274782.