



[Go to Product page](#)

Datasheet for ABIN7274819

HLAG Protein (Tetramer) (PE,HLA-G)

2 Images

Overview

Quantity:	100 µg
Target:	HLAG
Protein Characteristics:	Tetramer
Origin:	Human
Source:	HEK-293 Cells
Protein Type:	Recombinant
Purification tag / Conjugate:	This HLAG protein is labelled with PE,HLA-G.

Product Details

Purpose:	PE-Labeled Human HLA-G & B2M & Peptide (RIIPRHLQL) Tetramer Protein
Sequence:	Gly25-Thr305 (HLA-G), Ile21-Met119 (B2M) and RIIPRHLQL peptide
Specificity:	Uni-Prot: P17693-1 (HLA-G), P61769 (B2M), RIIPRHLQL
Characteristics:	Recombinant PE-Labeled Human HLA-G & B2M & Peptide (RIIPRHLQL) Tetramer Protein is expressed from HEK293 with His tag and Avi tag at the C-Terminus. PE-Labeled Human HLA-G & B2M & Peptide (RIIPRHLQL) Tetramer is assembled by biotinylated monomer and PE-labeled streptavidin. It contains Gly25-Thr305 (HLA-G), Ile21-Met119 (B2M) and RIIPRHLQL peptide.
Sterility:	0.22 µm filtered
Endotoxin Level:	Less than 1EU per µg by the LAL method.

Target Details

Target:	HLAG
---------	------

Target Details

Alternative Name: HLA-G ([HLA-G Products](#))

Background: HLA-G is a molecule that was first known to confer protection to the fetus from destruction by the immune system of its mother, thus critically contributing to fetal-maternal tolerance. The first functional finding constituted the basis for HLA-G research and can be summarized as such: HLA-G, membrane-bound or soluble, strongly binds its inhibitory receptors on immune cells (NK, T, B, monocytes/dendritic cells), inhibits the functions of these effectors, and so induces immune inhibition.

Pathways: [Regulation of Leukocyte Mediated Immunity](#), [Positive Regulation of Immune Effector Process](#), [Cancer Immune Checkpoints](#)

Application Details

Restrictions: For Research Use only

Handling

Format: Liquid

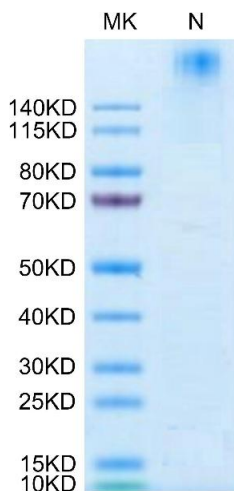
Buffer: Supplied as 0.22µm filtered solution in PBS, 0.2 % BSA (pH 7.4).

Storage: -80 °C

Storage Comment: Valid for 6 months from date of receipt when stored at -80°C., Recommend to aliquot the protein into smaller quantities for optimal storage. Please minimize freeze-thaw cycles.

Expiry Date: 12 months

Images

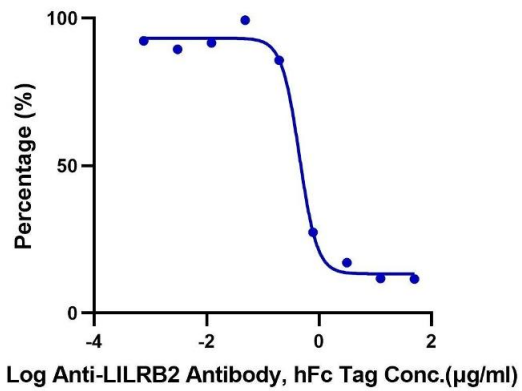


SDS-PAGE

Image 1. PE-Labeled Human HLA-G Tetramer on Tris-Bis PAGE under reduced condition. The purity is greater than 95 % .

Inhibition of Human LILRB2 and PE-Labeled HLA-G Binding

0.2µg Human LILRB2, mFc Tag Per Well



Binding Studies

Image 2. Serial dilutions of Anti-LILRB2 Antibody were added into PE-Labeled Human HLA-G Tetramer, His Tag : Human LILRB2, mFc Tag binding reactions. The half maximal inhibitory concentration (IC50) is 0.45 µg/mL.