

Datasheet for ABIN7274854

**IgE Protein (AA 208-429) (His-Avi Tag)****3** Images[Go to Product page](#)

## Overview

Quantity:	100 µg
Target:	IgE
Protein Characteristics:	AA 208-429
Origin:	Cynomolgus
Source:	HEK-293 Cells
Protein Type:	Recombinant
Purification tag / Conjugate:	This IgE protein is labelled with His-Avi Tag.

## Product Details

Purpose:	Cynomolgus IgE Protein
Sequence:	Lys208-Lys429
Characteristics:	Recombinant Cynomolgus IgE Protein is expressed from HEK293 with His tag and Avi tag at the C-Terminus. It contains Lys208-Lys429.
Purity:	> 95 % as determined by Tris-Bis PAGE, > 95 % as determined by HPLC
Sterility:	0.22 µm filtered
Endotoxin Level:	Less than 1EU per µg by the LAL method.
Biological Activity Comment:	Immobilized Cynomolgus IgE, His Tag at 1 µg/ml (100 µl/well) on the plate. Dose response curve for Anti-IgE Antibody, hFc Tag with the EC50 of 9.3 ng/ml determined by ELISA. See testing image for detail.

## Target Details

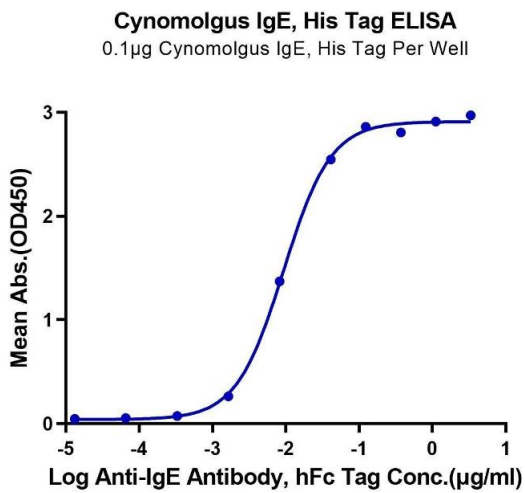
Target:	IgE
Abstract:	<a href="#">IgE Products</a>
Background:	Immunoglobulin E (IgE) is well known for its role in allergic disease, the manifestations of which are mediated through its two Fc receptors, FcεRI and CD23 (FcεRII). IgE and its interactions with these receptors are therefore potential targets for therapeutic intervention, and exciting progress has been made in this direction. Furthermore, recent structural studies of IgE-Fc, the two receptors, and of their complexes, have revealed a remarkable degree of plasticity at the IgE-CD23 interface and an even more remarkable degree of dynamic flexibility within the IgE molecule.
Molecular Weight:	27.9 kDa. Due to glycosylation, the protein migrates to 35-40 kDa based on Tris-Bis PAGE result.
UniProt:	<a href="#">G8F4W7</a>

## Application Details

Restrictions:	For Research Use only
---------------	-----------------------

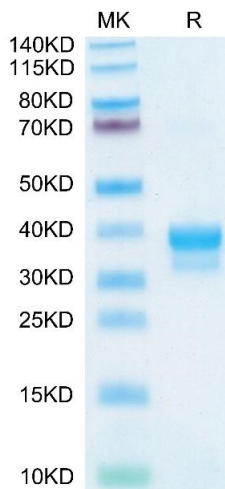
## Handling

Format:	Lyophilized
Reconstitution:	Centrifuge the tube before opening. Reconstituting to a concentration more than 100 µg/mL is recommended. Dissolve the lyophilized protein in distilled water.
Buffer:	Lyophilized from 0.22µm filtered solution in PBS ( pH 7.4). Normally 8 % trehalose is added as protectant before lyophilization.
Storage:	-20 °C,-80 °C
Storage Comment:	-20 to -80°C for 12 months as supplied from date of receipt., -80°C for 3-6 months after reconstitution., 2-8°C for 2-7 days after reconstitution., Recommend to aliquot the protein into smaller quantities for optimal storage. Please minimize freeze-thaw cycles.
Expiry Date:	12 months



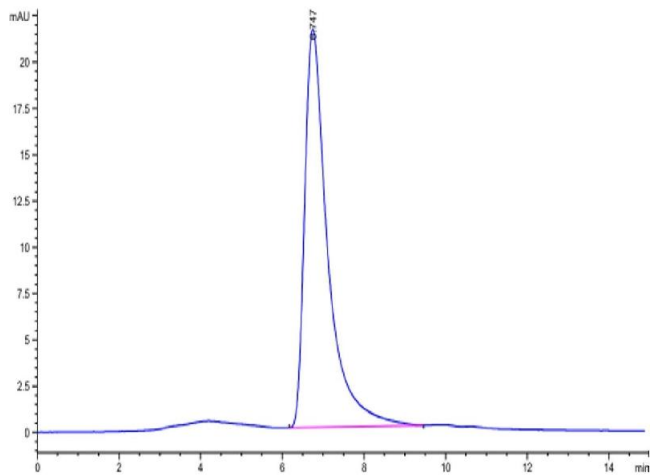
**ELISA**

**Image 1.** Immobilized Cynomolgus IgE, His Tag at 1 µg/mL (100 µL/well) on the plate. Dose response curve for Anti-IgE Antibody, hFc Tag with the EC50 of 9.3 ng/mL determined by ELISA.



**SDS-PAGE**

**Image 2.** Cynomolgus IgE on Tris-Bis PAGE under reduced condition. The purity is greater than 95 % .



**Size-exclusion chromatography-High Pressure Liquid Chromatography**

**Image 3.** The purity of Cynomolgus IgE is greater than 95 % as determined by SEC-HPLC.