

Datasheet for ABIN7274882

IL-1 beta Protein (AA 117-269) (His-Avi Tag)

5 Images

[Go to Product page](#)

Overview

Quantity:	100 µg
Target:	IL-1 beta (IL1B)
Protein Characteristics:	AA 117-269
Origin:	Human
Source:	Escherichia coli (E. coli)
Protein Type:	Recombinant
Purification tag / Conjugate:	This IL-1 beta protein is labelled with His-Avi Tag.

Product Details

Purpose:	Human IL-1 Beta/IL-1F2 Protein
Sequence:	Ala117-Ser269
Characteristics:	Recombinant Human IL-1 Beta/IL-1F2 Protein is expressed from E.coil with His tag and Avi tag at the C-Terminus.It contains Ala117-Ser269.
Purity:	> 95 % as determined by Tris-Bis PAGE,> 95 % as determined by SEC-HPLC
Sterility:	0.22 µm filtered
Endotoxin Level:	Less than 1EU per µg by the LAL method.
Biological Activity Comment:	Immobilized Human IL-1 Beta, His Tag at 5µg/ml (100µl/Well) on the plate. Dose response curve for Human IL-1R2, hFc Tag with the EC50 of 0.22µg/ml determined by ELISA. The affinity constant of 0.88 nM as determined in SPR assay (Biacore T200). See testing image for detail.

Target Details

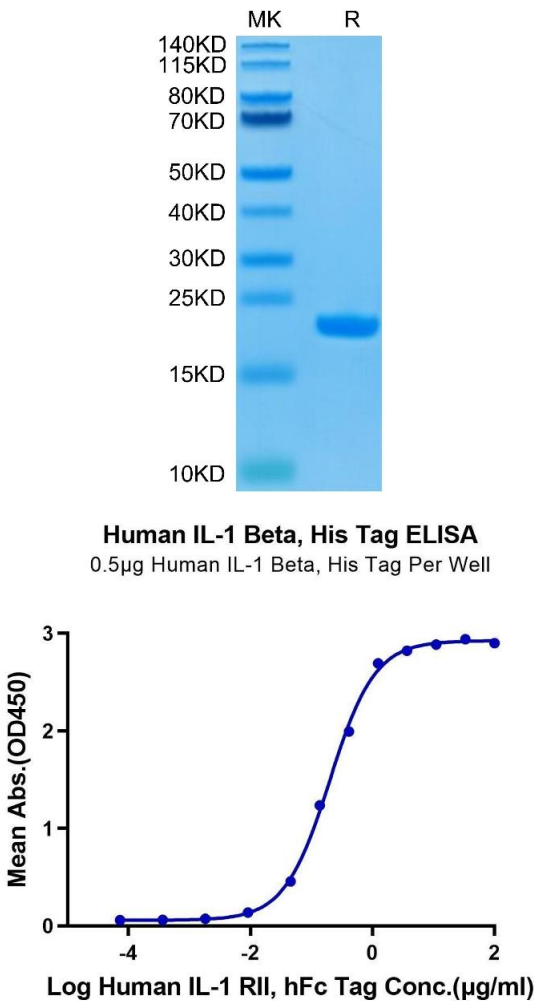
Target:	IL-1 beta (IL1B)
Alternative Name:	IL-1 Beta (IL1B Products)
Background:	Interleukin-1 beta (IL-1 β) is induced by inflammatory signals in a broad number of immune cell types. IL-1 β (and IL-18) are the only cytokines which are processed by caspase-1 after inflammasome-mediated activation. IL-1 signaling activates innate immune cells including antigen presenting cells, and drives polarization of CD4 T cells towards T helper type (Th) 1 and Th17 cells.
Molecular Weight:	20.1 kDa same as Tris-Bis PAGE result.
UniProt:	P01584
Pathways:	NF-kappaB Signaling , Interferon-gamma Pathway , TLR Signaling , Negative Regulation of Hormone Secretion , Cellular Response to Molecule of Bacterial Origin , Carbohydrate Homeostasis , Glycosaminoglycan Metabolic Process , Myometrial Relaxation and Contraction , Regulation of Leukocyte Mediated Immunity , Positive Regulation of Immune Effector Process , Autophagy , Cancer Immune Checkpoints , Inflammasome

Application Details

Restrictions:	For Research Use only
---------------	-----------------------

Handling

Format:	Lyophilized
Reconstitution:	Centrifuge the tube before opening. Reconstituting to a concentration more than 100 μ g/mL is recommended. Dissolve the lyophilized protein in distilled water.
Buffer:	Lyophilized from 0.22 μ m filtered solution in PBS (pH 7.4). Normally 8 % trehalose is added as protectant before lyophilization.
Storage:	-20 $^{\circ}$ C,-80 $^{\circ}$ C
Storage Comment:	-20 to -80 $^{\circ}$ C for 12 months as supplied from date of receipt., -80 $^{\circ}$ C for 3-6 months after reconstitution., 2-8 $^{\circ}$ C for 2-7 days after reconstitution., Recommend to aliquot the protein into smaller quantities for optimal storage. Please minimize freeze-thaw cycles.
Expiry Date:	12 months

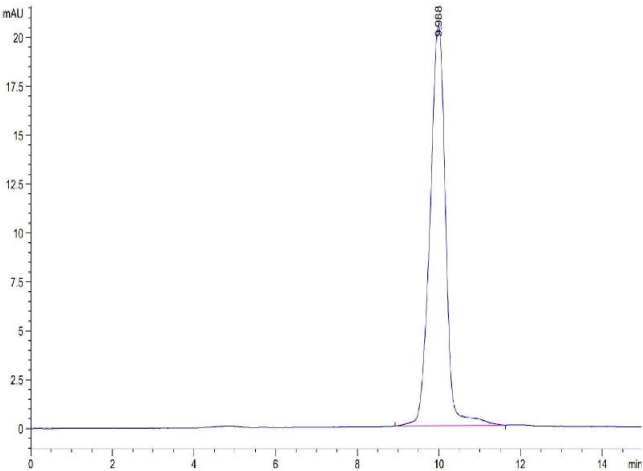


SDS-PAGE

Image 1. Human IL-1 Beta on Tris-Bis PAGE under reduced condition. The purity is greater than 95 % .

ELISA

Image 2. Immobilized Human IL-1 Beta, His Tag at 5 µg/mL (100 µL/Well) on the plate. Dose response curve for Human IL-1 RII, hFc Tag with the EC50 of 0.2 µg/mL determined by ELISA.



Size-exclusion chromatography-High Pressure Liquid Chromatography

Image 3. The purity of Human IL-1 Beta/IL-1F2 is greater than 95 % as determined by SEC-HPLC.

Please check the [product details page](#) for more images. Overall 5 images are available for ABIN7274882.